

WOOLLEY & WALLIS

SALISBURY SALEROOMS



Tribal Art & Antiquities
Wednesday 1st March 2017

Specialist Departments

Please dial +44 (0)1722 followed by the number listed below

20TH CENTURY DESIGN

Michael Jeffery	424505
Zoe Smith	329477

ARMS & ARMOUR, MEDALS & COINS AND MILITARIA

Ned Cowell	341469
Gemma Bush	341469

ASIAN ART

John Axford MRICS ASFAV	424506
Alex Aguilar Doméracki	424583
Freya Yuan	424589
Marta Olszewska	424591

ENGLISH & EUROPEAN CERAMICS & GLASS

Clare Durham	424507
--------------	--------

FURNITURE, WORKS OF ART & CLOCKS

Mark Richards	411854
Jim Gale	339161
Suzy Becsy	411854

JEWELLERY

Jonathan Edwards FGAA	424504
Marielle Whiting FGA	424595

PAINTINGS

Victor Fauvelle	424503
Jo Butler	424592

SILVER

Rupert Slingsby	424501
Lucy Chalmers	424594

TRIBAL ART & ANTIQUITIES

Will Hobbs	339752
Gemma Bush	339752

VALUATIONS FOR INSURANCE & PROBATE

Paul Viney ASFAV	424509
Clive Stewart-Lockhart FRICS FRSA	424598

MARKETING

Tamzin Corbett	424590
----------------	--------

ACCOUNTS

Janice Clift (Office Manager)	424500
-------------------------------	--------

GENERAL OFFICE

Sharon Ringwood	424500
Pauline Jones	
Nicola Young	
Amanda Lawrence	
Kirstie Tapper	

SALEROOM MANAGER

David Jordan	424500
--------------	--------

BOARD OF DIRECTORS

Paul Viney ASFAV	
<i>Chairman</i>	
John Axford MRICS ASFAV	
<i>Deputy Chairman</i>	
Clive Stewart-Lockhart FRICS FRSA	
<i>Managing Director</i>	

COMPANY SECRETARY

James Macarthur CA	424599
--------------------	--------

ASSOCIATE DIRECTORS

Janice Clift	
Clare Durham	
Jonathan Edwards FGAA	
Will Hobbs	
Michael Jeffery	
Mark Richards	
Rupert Slingsby	



Salisbury Salerooms, 51-61 Castle Street, Salisbury, Wiltshire SP1 3SU
Tel: 01722 424500 • www.woolleyandwallis.co.uk

TRIBAL ART & ANTIQUITIES

Wednesday 1st March 2017 at 10.00am

VIEWING TIMES

Saturday 25th February	10.00am – 1.00pm
Monday 27th February	10.00am – 4.30pm
Tuesday 28th February	10.00am – 4.30pm
Wednesday 1st March	9.00am – 10.00am

ENQUIRIES



Will Hobbs 01722 339752
wh@woolleyandwallis.co.uk



Gemma Bush 01722 339752
gb@woolleyandwallis.co.uk

ILLUSTRATIONS

Front cover: Lot 497 *detail*

Back cover: Lot 437 *reverse*

Catalogue £10.00 (£15.00 by post)

COLLECTION OF LOTS

All items will be in transit from the Salerooms to the Warehouse at Old Sarum on Friday 3rd March. From Monday 6th March collections will be from the Old Sarum Warehouse, 2 Danebury Court, Old Sarum Park, Salisbury SP4 6EB, please call 01722 339752 prior to collection to ensure the items are ready.

All accounts to be settled prior to collection.

TELEPHONE BIDDING

Please note that requests for telephone bids cannot be accepted after 5pm on Tuesday 28th February.

LIVE BIDDING



www.the-saleroom.com

Please register by 5pm on Tuesday 28th February.

Please note there is a 3% +VAT surcharge for using this service.

THE J. D. R. FRYER COLLECTION

The following twenty nine lots have been collected over the last forty years from differing UK sources, including Folio Fine Art Ltd, London; Fox & Co., Somerset; B A Seaby Ltd, London; Keith Lloyd, Ipswich; C J Martin Ltd, London; V C Vecchi, London, and are listed in various receipts.



1



2

1. An Egyptian green/blue faience shabti

Late Period, circa 525 - 332BC

holding a pick and a hoe with a basket over the left shoulder, with hieroglyphs and a plain back pillar, 9.8cm high, with a stand. (2) £600-800

Provenance

J.D.R Fryer Collection, UK.

2. An Egyptian green/blue faience shabti

Late Period - Ptolemaic Period, circa 525 - 30BC

holding a pick and hoe with a basket over the left shoulder, the front with hieroglyphs and with a back pillar, 13.5cm high, with a stand. (2) £600-800

Provenance

J.D.R Fryer Collection, UK.



3



4

3. An Egyptian light blue faience shabti

Third Intermediate Period, circa 1069 - 525BC

moulded with a wig and crossed arms and painted a headband, two hoes, a basket over the left shoulder and hieroglyphs to the front, 10.7cm high, with a stand. (2) £600-800

Provenance

J.D.R Fryer Collection, UK.

4. An Egyptian green faience shabti

Late Period, circa 525 - 332BC

with a curled tip beard and holding a pick and hoe with a bag over the left shoulder, the back pillar with column of hieroglyphs, 9cm high, with a stand. (2) £400-600

Provenance

J.D.R Fryer Collection, UK.



5. Six Egyptian alabaster vessels

Late Period, circa 525 - 332BC

including an ovoid jar with a wide rim and a flat lid, 5.5cm high, two with short neck and rims, a squat pot, a pointed tip ovoid jar and an alabastron with point handles, with two stands. (9) £600-800

Provenance

J.D.R Fryer Collection, UK.



6. An Egyptian faience winged scarab

Late Period, circa 747 - 332BC

blue/green in three parts, with attachment holes, 15cm wide, mounted.

£400-600

Provenance

J.D.R Fryer Collection, UK.



7. An Egyptian wood shabti

Second Intermediate Period, circa 1782 - 1570BC

of mummiform with tripartite wig with remains of paint and inscription, 23.6cm high, and an Egyptian wood shabti head fragment, 18th dynasty, charred, 9cm high. (2) £300-400

Provenance

J.D.R Fryer Collection, UK.

Charred head - Fox & Co, Yeovil, UK, 1986.



8. An Egyptian Predynastic black topped pottery jar

Naqada I - II, circa 4000 - 3100BC

ovoid with a flat base and a moulded rim, 13.5cm high, with a stand. (2) £300-400

Provenance

J.D.R Fryer Collection, UK.



9. An Egyptian wood shabti

New Kingdom, 19th dynasty, circa 1300BC

of mummified form with a tripartite wig stained black, 20cm high, with a stand, and an Egyptian wood shabti, New Kingdom, with a tripartite wig and crossed hands, with a black stain, 19cm high, with a stand. (4) £400-600

Provenance

J.D.R Fryer Collection, UK.

Black wig - collected by Major A Sharp in the Valley of the Kings, Thebes, 1922.



10. Three Egyptian shabtis
New Kingdom to Late Period, circa 1570 - 332BC
 including a terracotta example, missing the feet, a turquoise faience example holding a pick and hoe with a bag over the left shoulder and with hieroglyphs, and a green/blue faience example with painted implements, bag and hieroglyphs, the reverse with a handwritten label dated 1900, 11.7cm, 10.8cm and 11.2cm high, two with stands. (5) £300-500

Provenance
 J.D.R Fryer Collection, UK.
 Green/blue faience - Fox & Co, Yeovil, UK, 1992.



11. Three Egyptian faience shabtis
Third Intermediate Period to Late Period, circa 1069 - 332BC
 including a bright blue example with painted wig, implements and a bag on the back, another green/blue with large ears, holding a pick and hoe with a bag over the left shoulder and a turquoise example, 9cm, 10.5cm and 7.2cm high, on stands. (6) £300-500

Provenance
 J.D.R Fryer Collection, UK.



12. An Egyptian blue faience shabti
Third Intermediate Period, circa 1069 - 525BC
 with black glazed wig and beard, holding implements and with impressed hieroglyphs, the back with a printed label AST-EN-KHEB and handwritten *Isiemkheb*, 7.6cm high, with a stand. (2) £500-700

Provenance
 J.D.R Fryer Collection, UK.



13. An Egyptian turquoise glazed offering vessel
New Kingdom, circa 1320 - 1200BC
 of conical form with flared foot and rim, the side with remains of an inscription, 5.3cm high, ten Egyptian faience and pottery shabtis, a faience lion headed goddess fragment and a pottery fragment of a kneeling figure supporting a child, seven with stands. (20) £400-600

Provenance
 J.D.R Fryer Collection, UK.



14. A collection of Egyptian antiquities
New Kingdom - Romano Egyptian
 including four composite shabtis, two clay frog oil lamps, seven miniature bowls and vessels and an oil lamp, a red polished pottery vessel, an alabaster vessel, a scarab with a carved base, a turquoise bead, a small faience animal, a black stone figural amulet, a bronze lizard sarcophagus, a carved stone hieroglyph fragment and two painted clay shabtis. (30) £300-400

Provenance
 J.D.R Fryer Collection, UK.



15. Four Egyptian carved wood figures
New Kingdom and later

including a male figure leaning forward, with polychrome decoration, *losses*, with written collection number 393., 22.5cm high, with a stand, a kneeling figure, a lion headed goddess deity, a walking jackal headed Anubis, a small hand from a sarcophagus lid and a feather plume cresting, with stands. (11)

£400-600

Provenance

J.D.R Fryer Collection, UK.

Small hand - excavated in Saqqara in 1971.



16. An Egyptian mummified hawk's head

cloth with painted decoration, 8.7cm high, mounted, and an Egyptian mummified fish, 22cm long. (2)

£100-200

Provenance

J.D.R Fryer Collection, UK.

Hawks' head - B.A.Seaby, London, 1985.

Fish - Almost certainly from the mummified fish tomb at El Gabeleim, Egypt.



17. Six Egyptian bronze antiquities

Late Period, circa 664 - 30BC

including a mummiform figure of Osiris holding the crook and flail and wearing a plumed headdress with sun disc, 10.5cm, with a stand, a head fragment of Osiris, a seated figure of Horus, a serpent sarcophagus, a bull and an ichneumon, all with stands. (12)

£300-500

Provenance

J.D.R Fryer Collection, UK.



18. Five Egyptian bronzes

Late Period, circa 664 - 332BC and later

including Isis holding the suckling infant Horus in her lap, 10cm high, with a stand, an Ibis head, a Hawk of Horus, walking Horus with a sun disc, and a Uraeus with remains of inlaid glass, all on stands. (10)

£300-500

Provenance

J.D.R Fryer Collection, UK.



19



20



21



22



23

19. Twenty Egyptian faience mounted amulets

Late Period, 664 - 331BC

including a hare, a ram, three cats, a frog, a lion, a pig, Pataikos wearing a cropped wig and with a winged deity to the reverse, a double falcon body with sun discs, Thoeris, a falcon, a kneeling Shu with arms raised, a crown, two striding amulets, a head and three others, 3.6cm, the highest. (40)

£400-600

Provenance

J.D.R Fryer Collection, UK.

20. Twenty Egyptian amulets

Late Period, circa 664 - 332BC

mainly faience, including two lion headed goddess walking figures, another seated, two Thoeris figures, three falcon headed, a ram headed figure, two female deities, a triad amulet, a seated deity with a double crown, an udjat eye, a falcon, a recumbent jackal, a crocodile, a tit or girdle of Isis amulet, a djed pillar and a lapis lazuli frog, 6.5cm the highest, nineteen mounted. (39)

£500-700

Provenance

J.D.R Fryer Collection, UK.

21. A group of Egyptian antiquities

Third Intermediate Period and later

including a turquoise faience walking jackal headed Anubis amulet, 5cm high, on a stand, a faience Nefertum amulet fragment, two faience stylised amulets, a falcon head amulet fragment wearing a double crown, a aubergine glazed shabti, another turquoise, two head amulets, an udjat eye amulet, two terracotta rosette moulds, another with white pigment, a painted hieroglyph fragment and four terracotta heads. (22)

£350-450

Provenance

J.D.R Fryer Collection, UK.

22. Nine Egyptian faience amulets

Late Period, 664 - 331BC

including five walking deities; ram, ibis, falcon, Thoeris and lion; a pierced Udjat eye, a papyrus sceptre, a jackal, a seated deity, a pair of bead earrings, a bead necklace, a bronze eye, a bronze lion head goddess, a bronze lion head with a crown, thirteen scarab beads, the bases carved hieroglyphs, animals or patterns, and five beads with carved bases, the bronze eye 7cm long. (33)

£400-600

Provenance

J.D.R Fryer Collection, UK.

23. A large group of Egyptian amulets

Late Period, circa 664 - 332BC

mainly faience including fifteen Udjat eyes, thirteen deities, three papyrus sceptres, a headrest, two hares, beads, two scarabs, a Lapis Lazuli Bes head, a glass vessel with a handle and various others. (approx 100)

£400-600

Provenance

J.D.R Fryer Collection, UK.



24. Six Roman bronze artefacts circa 2nd - 3rd century AD

including a bird, a bull, a bull's head, an eagle, a phallic amulet and an amulet weight; a lead bird, a bronze arrowhead and a bronze eagle head mount, the longest 4cm. (9)

£100-200

Provenance

J.D.R Fryer Collection, UK.

The lead bird found in Dorset.

The bronze arrowhead excavated at Agrigentum, Sicily.



25. A small group of pottery antiquities

Syria, Cypriot and Chinese, circa 2000BC and later

including four human votive heads, two animal heads, a bulbous vessel, a jug fragment, two shell rings, a banded two handled pot, a zodiac dragon, a standing figure and a pot, the highest 12.5cm. (19)

£150-250

Provenance

J.D.R Fryer Collection, UK.



26. Nine Cypriot votive terracotta fragments

circa 1000 - 500BC

including five goddess heads with headdresses, two heads with head bands, a flat torso with arms and a female torso, the highest 10cm. (9)

£100-200

Provenance

J.D.R Fryer Collection, UK.



27. Five Maya pottery whistles

Mexico

variously modelled as a bat, a warrior, a cockerel with a handle, a smaller bird and an anthropomorphic example, the highest 11cm,

and a fertility figure, a seated figure with a feathered headdress, an effigy pipe with a hare, a kneeling pot back figure and two bowls. (14)

£150-250

Provenance

J.D.R Fryer Collection, UK.



**28. A collection of Cypriot pottery vessels and figures
circa 2700 - 400BC**

including a jug with a pinched spouted neck with a loop handle and banded decoration, 19cm high, a milk bowl, with a 'wishbone' handle, a two handled shallow bowl, a jug, a footed bowl, a black-ware flask and five torsos. (15)

£400-600

Provenance

J.D.R Fryer Collection, UK.



29. Nine Maya clay heads

Mexico

most with elaborate headdress's, the highest, 8cm, and seven Equador/Peru pottery artefacts, including three human heads, an idol, a bird, an animal head and a spindle whorl with a grotesque mask. (22)

£150-250

Provenance

J.D.R Fryer Collection, UK.

THE HOPE COLLECTION



30

30. A Colima vessel

Mexico

terracotta, modelled as a resting dog with a circular aperture in its back and with five beads in its mouth, 23cm long.

£200-300

Provenance

Sir Peter Hope KCMG, 1912 - 1999, British Intelligence Officer and later Ambassador to Mexico 1968-72.

31. A Colima vessel

Mexico

terracotta, modelled as a plump dog with its tail forming the spout, 24.5cm long.

£600-800

Provenance

Sir Peter Hope KCMG, 1912 - 1999, British Intelligence Officer and later Ambassador to Mexico 1968-72.

Exhibited

Ancient Mesoamerica, Precolumbian Mexican and Maya Art, Birmingham Museum & Art Gallery, 4th June to 31st July 1970. No. 69.

32. A Colima dancing dogs group

Mexico

earthenware, standing on their hind legs, with ribbed spines, one with incised linear decoration, 15.5cm high.

£200-300

Provenance

Sir Peter Hope KCMG, 1912 - 1999, British Intelligence Officer and later Ambassador to Mexico 1968-72.

33. A Colima whistle figure

Mexico

terracotta, modelled as a warrior holding a shield, with a cut out corner and holding a club, the mouthpiece above the headdress, 11.5cm high.

£200-300

Provenance

Sir Peter Hope KCMG, 1912 - 1999, British Intelligence Officer and later Ambassador to Mexico 1968-72.

Exhibited

Ancient Mesoamerica, Precolumbian Mexican and Maya Art, Birmingham Museum & Art Gallery, 4th June to 31st July 1970. No. 78.

34. A pair of Colima hunchback figure vessels

Mexico

earthenware with a red slip, 12cm high. (2)

£300-500

Provenance

Sir Peter Hope KCMG, 1912 - 1999, British Intelligence Officer and later Ambassador to Mexico 1968-72.

Exhibited

Ancient Mesoamerica, Precolumbian Mexican and Maya Art, Birmingham Museum & Art Gallery, 4th June to 31st July 1970. No's 87 and 88.



31



32



33



34

35. A Veracruz smiling face figure whistle

Mexico

terracotta, with a large head with aperture at the top, with out stretched arms, wearing a necklace and skirt, 23.5cm high, and an Olmec seated female figure. (2)

£200-300

Provenance

Sir Peter Hope KCMG, 1912 - 1999, British Intelligence Officer and later Ambassador to Mexico 1968-72.



35



36. A Maya bowl
Mexico

earthenware, with concave sides, the exterior painted with three warrior heads to a white ground, the interior with an orange ground and darker bands, 17cm diameter,
a Maya deep earthenware bowl, with two exterior panels painted a stylised falcon head, a tripod bowl and a deep red-ware lobed vessel. (4) £300-500

Provenance

Sir Peter Hope KCMG, 1912 - 1999, British Intelligence Officer and later Ambassador to Mexico 1968-72.

Exhibited

Deep bowl - Ancient Mesoamerica, Precolumbian Mexican and Maya Art, Birmingham Museum & Art Gallery, 4th June to 31st July 1970. No. 139.



37. A Chupicuaro female 'choker' figure
Mexico

clay with a two part coiffure and with hands on the abdomen, with red pigment, circa 500 - 200BC, 8.7cm high,
a Chupicuaro similar larger figure and a male figure with bitumen highlights. (3) £200-300

Provenance

Sir Peter Hope KCMG, 1912 - 1999, British Intelligence Officer and later Ambassador to Mexico 1968-72.

Exhibited

Small figure - Ancient Mesoamerica, Precolumbian Mexican and Maya Art, Birmingham Museum & Art Gallery, 4th June to 31st July 1970. No. 21.



38



39

38. A Colima dog
Mexico

earthenware, 13cm long. £100-150

Provenance

Sir Peter Hope KCMG, 1912 - 1999, British Intelligence Officer and later Ambassador to Mexico 1968-72.

39. A Colima vessel
Mexico

terracotta, modelled as a resting dog, with pierced ears and a spout on its back, 15.5cm long. £200-300

Provenance

Sir Peter Hope KCMG, 1912 - 1999, British Intelligence Officer and later Ambassador to Mexico 1968-72.

40. A Colima seated figure
Mexico

terracotta, wearing numerous earrings and a crossed ribbed headdress with a pony tail, 18.5cm high. £150-250

Provenance

Sir Peter Hope KCMG, 1912 - 1999, British Intelligence Officer and later Ambassador to Mexico 1968-72.



40



41

41. A Nayarit figure
Mexico

clay with a red slip, of flattened type wearing a tasseled belt, 20cm high, and a clay standing figure. (2) £150-200

Provenance

Sir Peter Hope KCMG, 1912 - 1999, British Intelligence Officer and later Ambassador to Mexico 1968-72.

42. A Maya circular dish**Mesoamerica,**

earthenware with an orange ground and painted a seven pointed motif and line bands, Classic period, 33cm diameter.

£200-300

Provenance

Sir Peter Hope KCMG, 1912 - 1999, British Intelligence Officer and later Ambassador to Mexico 1968-72.

43. A Mexican stone figure

in Guerrero style,

23cm high,

and an Olmec style greenstone figure. (2)

£300-500

Provenance

Sir Peter Hope KCMG, 1912 - 1999, British Intelligence Officer and later Ambassador to Mexico 1968-72.

44. A Maya seated figure**Jaino, Mexico**

clay with a red slip, wearing a poncho and a necklace,

12cm high,

and a Nayarit black clay female figure. (2)

£150-200

Provenance

Sir Peter Hope KCMG, 1912 - 1999, British Intelligence Officer and later Ambassador to Mexico 1968-72.

Exhibited

Ancient Mesoamerica, Precolumbian Mexican and Maya Art, Birmingham Museum & Art Gallery, 4th June to 31st July 1970. No. 102.

45. A Maya tortoise**Mexico**

black clay, with applied beads and previously with a bowl surmount, 15cm long,

a Maya vessel with a relief mask, a Teotihuacan candelero, a Maya bowl fragment, a bird head fragment and a pair of figures. (7)

£150-200

Provenance

Sir Peter Hope KCMG, 1912 - 1999, British Intelligence Officer and later Ambassador to Mexico 1968-72.

46. A South Arabian head probably circa 1st century AD

alabaster with recessed eyes for inlay, missing, with ears and a flattened nose and lips,

9.5cm high, mounted on a plinth,

and a South Arabian bull stele, mounted. (2)

£300-400

Provenance

Sir Peter Hope KCMG, 1912 - 1999, British Intelligence Officer and later Ambassador to Mexico 1968-72.



42



43



44



45



46



47



48



49



50



51



52



53

OTHER PROPERTIES

47. A Chancay pottery double vessel

modelled a stylized figure with chevron bands to the front and reverse with a handle and spout,
17cm high.

£150-250

48. Six pre-Columbian pottery objects

including a Mayan whistle,
12cm high,
a seated maternal figure, 29cm high, a cup with black line decoration, a two handled pot and two figures. (6)

£150-250

49. A Moche vessel

Peru

terracotta with a seated figure having a bag around his neck, with a stirrup spout,
16cm high.

£200-300

50. A Chimu blackware vessel

Peru

modelled as a head with linear facial scarifications, with a spout at the top, the handle missing,
16.5cm high.

£150-200

51. A Maya amulet

Mesoamerica

jade of figural form with the arms laid to the chest, pierced for attachment through the neck,
4.6cm high.

£100-200

Provenance

Given to the present owner by Daniel Oduber Quiros, President of Costa Rica (from 1974 - 1978) from his private collection of Pre-Columbian artefacts.

52. A Mezcala idol

Mexico

basalt of stylized human form,
18.6cm high.

£150-200

53. A Tanagra style pottery figure of a lady

probably 18th century

hollow with a rectangular aperture to the reverse, wearing a long robe with both feet partially exposed,
31cm high.

£100-200

THE SEWARD KENNEDY COLLECTION

The following two hundred and two lots bear testament to one man's discerning eye to the unusual, form, patina and the exotic. A career path as an American lawyer, Seward's New York property filled with the accumulation of his quest to preserve the past in acquiring objects that were drawn to him and then overflowed into his Norland Place property in London. Each drawer, shelf and surface revealed a fascinating world of mystery, intrigue and amazement from Egyptian shabtis, Celtic brooches, African currency, figures, Pacific shell, Peruvian textiles to Inuit wrist guards, all waiting for the next custodian to enjoy.



54. An Egyptian turquoise faience shabti
Late Period, circa 664 - 332BC

with a tripartite grooved wig and false beard, holding a pick and hoe with a seed bag over the left shoulder, with a column of hieroglyphs and a back pillar, 12.5cm high.

£600-800

Provenance
Seward Kennedy, London.



55. An Egyptian faience shabti
Late Period, circa 664 - 332BC

with a tripartite grooved wig and a false beard with scroll tip, holding a pick and hoe with a seed bag over the left shoulder, with hieroglyphs and a back pillar, 18.6cm high.

£800-1,200

Provenance
Seward Kennedy, London.



56



57

56. An Egyptian faience Djed pillar amulet
Late Period, circa 664 - 332BC

with fine grooved capitals, the back pillar pierced for suspension, 8.5cm high.

£100-200

Provenance
Seward Kennedy, London.

57. Two Egyptian wood shabtis
New Kingdom, circa 1570 - 1070BC

with tripartite wigs, facial features and folded arms, with remains of a black patina, 19cm high, on perspex stands. (4)

£400-600

Provenance
Seward Kennedy, London.



58



59

58. An Egyptian wood and gesso mummy mask
Late Period, circa 664 - 332BC

with remains of painted eye decoration and with pegs, 34cm high.

£150-250

Provenance
Seward Kennedy, London.

59. Two Egyptian wood mummy masks
Ptolemaic Period, circa 332 - 30BC

one with remains of cartonnage and polychrome decoration, with pegs, the other with remains of white pigment and with mounting holes, on a stand, 23.5cm and 23cm high. (3)

£300-400

Provenance
Seward Kennedy, London.



60. Four Egyptian sarcophagus fragments
Thrid Intermediate - Late Period, circa 1069 - 332BC

wood, cartonnage and polychrome decorated including Horus, an Udjat eye, a figure lying on a bed, and a foot section with hieroglyphs and two recumbent dogs, 16cm high, the foot section. (4)

£300-500

Provenance
Seward Kennedy, London.

61. Six Egyptian wood fragments**Third Intermediate - Late Period, circa 1069 - 332BC**

including two Ba birds, one polychromed, two polychromed tit knots, a small fragment with hieroglyphs and a uraei serpent polychromed crest, the highest 12.5cm. (6) £100-200

*Provenance**Seward Kennedy, London.*

61

63. Two Egyptian painted cartonnage fragments**Ptolemaic Period, circa 332 - 30BC**

depicting a seated figure with a sceptre and a measuring amulet on his head, with a hieroglyph border, the other with a seated figure at a cow altar, 36.5cm the highest. (2) £300-400

*Provenance**Seward Kennedy, London.***64. Eight Egyptian wood fragments****New Kingdom - Late Period, circa 1550 - 332BC**

including a pair of Ibis feet, 22.5cm long, two ears, one polychromed, a Djed pillar capitol, a plume mount, a relief carving of a deity holding a sceptre and with an offering table below and a headrest base. (9) £200-300

*Provenance**Seward Kennedy, London.*

64

65. A group of Egyptian antiquities**Late Period, circa 664 - 332BC**

faience including two figures of Bes, two amulet figures of Pataikos, one with a scarab on its head and a falcon deity to the back, an Udjat eye disc, four flat deities, pierced for mounting, a feather plume with a monkey and three geese, a palmette finial, a fruit amulet, a recumbent lion fragment, a panel with three deities and a pierced panel with a figure, the highest 7.5cm. (16) £200-300

*Provenance**Seward Kennedy, London.*

62

62. Three Egyptian painted wood fragments**Late Period, circa 664 - 332BC**

including a piece with a pair of eyes with a pillar between, 46cm long, one with a moulded cornice and painted a female figure, an eagle headed deity with a sceptre, the reverse with two bunches of grapes, the third fragment with plants and an Udjat eye. (3) £150-250

*Provenance**Seward Kennedy, London.*

63



65



66. A group of Egyptian amulets

Late Period, circa 664 - 332BC

mainly faience including six Udjat eyes, two headrests, five scarabs with incised bases, another hardstone scarab, a Bes figure, a Pataikos figure, two kneeling Shu figures, a jackal deity, a falcon deity, a nubian head, a fist, a monkey deity, a head fragment, two deities, a miniature vessel and two uninscribed seals, the highest 3cm. (29)

£100-200

Provenance

Seward Kennedy, London.



67. A collection of antiquities

including an Egyptian bronze lion head goddess deity amulet, 8.5cm high, four miniature clay shabtis, a large blue faience circular plug, a polychrome decorated terracotta fragment, a blue faience cover, a tile fragment, a seated deity, a double figure group, a silver coloured metal intaglio ring, with a running hound, a bronze Bacchus in a erotic pose and five various plaques/discs. (28)

£150-200

Provenance

Seward Kennedy, London.



68. A group of Egyptian antiquities

Late Period and later

mainly faience including a large scarab, a Pataikos torso, a scarab ring, an Imhotep head, a kneeling Shu amulet, a lioness head amulet, two phallic amulets, a crowned Djed pillar, a relief carved stone fragment depicting an Ibis in a bowl, a column amulet, a seal tile, a figure, two animals and a carved amulet bead, the largest 10cm wide. (16)

£100-200

Provenance

Seward Kennedy, London.



69

69. A group of amulets, seals and weights

including three Egyptian hardstone hoop earrings or hair rings, nine bead amulets, two animal amulets, a wadj tablet amulet, a sun disc, a rosette mould, three Byzantine bronze square weights with incised symbols, one inlaid silver, six cylinder seals, an elliptical seal, an Egyptian glass seal, two glass seals, four beads and seventeen stone disc beads. (51)

£100-200

Provenance

Seward Kennedy, London.

70. A group of Egyptian amulets

Late Period, circa 664 - 332BC

mainly faience including three Djed pillars, two double lions, one mounted, four Udjat eyes, one hardstone, two Pataikos figures, two rams, a hare, seated Horus with side lock, a tablet with a crowned bull, and a pair of feet, the highest 4cm. (18)

£250-350

Provenance

Seward Kennedy, London.

71. An Egyptian lapis lazuli Thokeris amulet

Late Period, circa 664 - 332BC

4cm high, a lapis lazuli scarab amulet, a glass bead bracelet and a two black two finger amulets. (5)

£150-200

Provenance

Seward Kennedy, London.



70



71

72. A collection of Roman and later glass vessels

including three beakers, a moon flask, a feeding cup, three slender neck jars, a small unguentarium, a pinched rim jug and eight bangles, the highest 24cm. (29) £300-400

Provenance
Seward Kennedy, London.



72

73. A collection of glass vessels

including an Islamic molar flask, a Roman unguentarium, a faceted globular vessel, a miniature handled vessel amulet, a miniature vessel with carved sides, eleven small flasks/bottles and twenty three miniature 'bead' vessels, the highest 17.5cm. (47) £150-250

Provenance
Seward Kennedy, London.



73

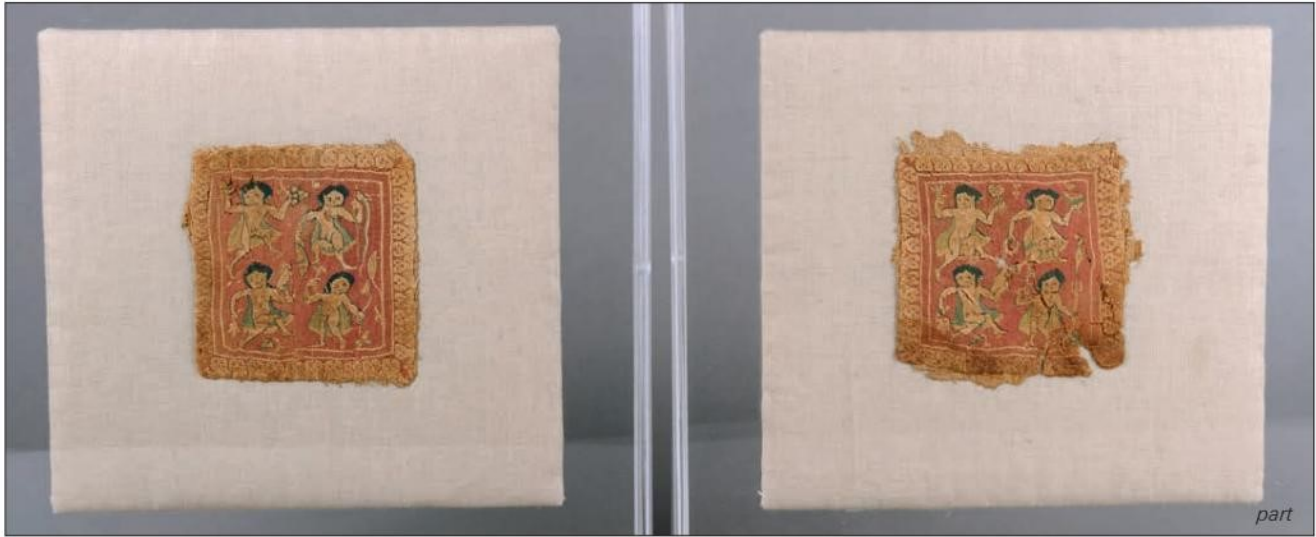
74. Three Egyptian mosaic glass fragments

Ptolemaic Period, circa 332 - 30BC
including a bird, two floral panels, a later millefiori panel, five mosaic beads and two yellow and bead glass head pendants, 4.2cm the longest. (11) £300-400

Provenance
Seward Kennedy, London.



74



75. A pair of Coptic textile fragment panels
circa 3rd - 4th century AD

each with four figures, representing earth, fire, air and the sea on one, the other possibly the seasons,
 10 x 9cm, mounted and cased,
 with seven other textiles fragments. (9)

£150-250

Provenance
 Seward Kennedy, London.



76

76. A collection of antiquities

including a gilt metal shield boss, two bone handles, two sword handles, one with carved alabaster mythical beasts, a carved shell bird finial with a turquoise bead eye, a wood fragment with a carved mask, a bone fragment with circle decoration, two figures, a head, an agate fragment and nine animals and birds. (24)

£200-300

Provenance
 Seward Kennedy, London.

77. Seven terracotta items

including a Hellenistic style boar, a camel and another animal, two Cypriot figures, a Hellenistic head and an erotic torso. (8)

£100-200

Provenance
 Seward Kennedy, London.



77



78

78. Five Roman marble fragments

including a male torso,
 10cm high,
 a right leg, on a stand, a finger, a female torso and a female head
 with her hair bound in a chignon. (7)

£200-300

Provenance
 Seward Kennedy, London.

79. Five Roman bronze handles**1st - 3rd century AD**

including three of scroll type, one with a lion paw terminal, another a heron with a fish terminal, and a duck head terminal, a short example with a lion head and a straight ribbed type with a rams head, the highest 13cm, four with stands. (9)

£300-400

*Provenance**Seward Kennedy, London.***80. A group of bronze antiquities**

including a pair of Egyptian bronze eyes with stone insets and lashes, a pair of blue glass eyes, a double uraei amulet with remains of inlay, an eagle head fragment, a child's bangle, a flat back figure and eight phallus items. (18)

£150-250

*Provenance**Seward Kennedy, London.*

79

81. An Egyptian pottery pilgrim flask of St Menas probably 6th century AD

depicting the saint flanked by camels, one handle missing, 10.5cm high, a Greek pottery askos, decorated two recumbent leopards, and four pottery birds. (6)

£100-150

*Provenance**Seward Kennedy, London.*

80



81

82. Seven bronze artefacts Roman and Byzantine

including three strigils, a thin crescent shape blade, two circular mirrors and an oil lamp, the longest 24cm. (7)

£300-500

*Provenance**Seward Kennedy, London.*

82



83

83. Twelve Roman/Greek glass fragments

including ribbed pieces, with iridescent or trailing finish, the largest 10.5cm. (12)

£100-200

*Provenance**Seward Kennedy, London.*



**84. Twenty two bronze fibulae
Celtic and Roman**

the largest, 12.6cm,
six bronze buckle clasps, a cross pendant and a bronze four headed
dragon brooch. (31) £300-500

*Provenance
Seward Kennedy, London.*



**85. A Roman crossbow fibula
circa 4th century AD**

gilt bronze with faceted and ribbed ovoid terminals,
8cm long,
and five Celtic bronze fibulae, four animal brooches, a cross shape
brooch, a circular brooch with inlaid enamel, a ring and four mounts. (17) £200-300

*Provenance
Seward Kennedy, London.*



86

**86. Fifteen bronze artefacts
Roman and later**

including a tripod with griffin heads, a handle with a
swan neck terminal, another with a mask terminal, a
pair of lock clasps with duck heads, another with floral
engraved decoration, three crescent shape handles, a
crescent axe blade, two spoons, a ribbed handle, a
faceted handle with an animal mask terminal and a
standing figure, 13cm high. (17) £300-400

*Provenance
Seward Kennedy, London.*

**87. A group of Romano British bronze artefacts
1st - 4th century AD**

including three keys, a large bow fibula, a right hand,
three figures, three clasps, a torque brooch, two duck
head terminals, a bird finial, a key pendant, a Janus
animal pendant and four other items,
the longest 8.2cm. (21) £150-250

*Provenance
Seward Kennedy, London.*



87



88

**88. Nine bronze artefacts
Roman and later**

including six pins, with bird, rosette and figural
terminals, a bangle with animal head terminals and a
pair of bangles with duck terminals,
the longest 23.2cm. (9) £100-200

*Provenance
Seward Kennedy, London.*



89. Five mammoth teeth
including a fossilised example *damaged*,
20cm the longest. (6)

Provenance
Seward Kennedy, London.

£200-400



90. A large knapped brown flint
the larger end with painted collection number H902,
36.5cm long,
two rock crystal specimens, three fossilised rock specimens and a
slate panel with eight applied facsimile animal fossils. (7) £200-300

Provenance
Seward Kennedy, London.



91. A collection of stone beads, implements and weights
including an ovoid mortar and associated pestle, a cylinder idol,
eight large beads, an axe head and two weights with iron wire,
the longest 32cm. (26)

£300-400

Provenance
Seward Kennedy, London.



92. A collection of eighteen stone arrowheads
of differing designs, a stone cutting implement, two large stone
spearheads and four glass/obsidian arrowheads,
the longest 25.5cm. (26)

£200-300

Provenance
Seward Kennedy, London.

93. Three Shepherd's Crowns
fossilised echinocorys,
3.5cm, 4.2cm and 5cm high. (3)

£50-100

Provenance
Seward Kennedy, London.





94. Thirteen axe heads

differing stone, one modelled as a bird head and a long stone tool, with chisel and tapering ends, with handwritten label *Ohio Hocking County*, the longest 27cm. (14)

£300-500

Provenance

Seward Kennedy, London.



95. A North West Coast of America adze blade

stone with a curved pointed tip and two grooves for attachment, with Fenton & Sons, 11, New Bond Street label, 29cm long, four grooved stone axe heads, a New Mexico axe with a bifurcated handle and a Mezcala stone axe god. (7)

£400-600

Provenance

Seward Kennedy, London.



96. A Costa Rica mace head

stone modelled as an owl's head, 7cm high, a Costa Rica stone parrot axe head, a stone mace head and a large carved stone collar mount, each side with the head of a horned animal. (4) £400-600

Provenance

Seward Kennedy, London.



97. A shell mask possibly Maya, Mexico

with pierced eye sockets and mouth, with two attachment holes above, the reverse with incised decoration, 13.5cm high, in a fitted box, marked Carlebach Gallery, 1040 Madison Ave. New York 21, N.Y., another shell mask, with apertures for nose, eyes and mouth with teeth, 9cm high, in a similar fitted box, and a third shell mask with a diaper headdress with a central mask. (5)

£400-600

Provenance

Seward Kennedy, London.



98. Fifteen Chinese blue glass ear spools *erhtang* probably Han Dynasty

of cylindrical flared form, the highest 3cm, a pair of green glass spools and ten glass rods and pillars. (27)

£100-200

Provenance

Seward Kennedy, London.

99. A Mimbres black on white bowl
New Mexico

clay with a scroll and geometric designs, 25cm diameter, and two Maya style vessels, the smaller with scratch decoration. (3) £100-150

Provenance

Seward Kennedy, London.



99



100

100. A Maya cylinder vessel
Mesoamerica

clay, with an orange ground and painted three seated dignitaries wearing elaborate headdresses, 14.5cm high. £400-600

Provenance

Seward Kennedy, London.

101. A Maya tripod dish
Mexico

terracotta with geometric painted designs, 18.5cm diameter, a Maya circular bowl and two red ware vessels. (4) £100-200

Provenance

Seward Kennedy, London.



101



102

102. A large pottery vessel

bulbous with a terracotta ground with a painted scroll band in burnt red and cream pigments, 40.5cm high. £100-200

Provenance

Seward Kennedy, London.



103. A Mexican terracotta footed dish

with a ribbed exterior rim, 15.5cm high, a cylindrical vessel with painted leaves, a footed pot, a two handled vessel with an elliptical rim, and two bulbous vessels each with a loop handle. (6) £100-200

Provenance

Seward Kennedy, London.



104. A Chancay mask

Peru

wood with hollow eyes and hooked nose, with a pointed stem, 33cm high. £150-250

Provenance

Seward Kennedy, London.



105. A Colima vessel

Mexico

terracotta, modelled as a dog with a spout and handle, 19.5cm high, a Jalisco standing female and a Nayarit seated figure. (3) £200-300

Provenance

Seward Kennedy, London.



107



108



106. A collection of Pre-Columbian textile fragments

Peru

depicting animals and figures, the largest of a crowned bird with a head, 56 x 40cm, mounted. (28) £150-200

Provenance

Seward Kennedy, London.

107. A blackware pottery bowl

with two monkey's on the neck, 10.5cm high, an elliptical vessel with a flared neck, a bird head fragment, a cylindrical stone vessel, a pottery shallow bowl with sea encrustation and a miniature cocoon type vessel. (6) £100-200

Provenance

Seward Kennedy, London.

108. Three Chupicuaro figures

Mexico

clay of flattened type with traces of red and white pigment, the highest 8.5cm a taller Chupicuaro female figure, four pottery animals and a seated female idol. (9) £100-200

Provenance

Seward Kennedy, London.

109. A South American beaker

probably 18th century

wood of waisted flared form with incised geometric and chevron designs, the under side incised a Latin cross, 9cm high, a Taino style stone skull, an Inuit soapstone bear amulet, a Persian agate zoomorphic vessel and a Maori nephrite pendant. (5) £200-300

Provenance

Seward Kennedy, London.



109

110. Three Dogon masks**Mali**

fragmentary wood, including a Kanaga mask with black and red pigment, 54.5cm high. (3) £200-300

Provenance

Seward Kennedy, London.



110



111

111. Five Tellem headrests**Mali**

wood, four with incised decoration, 16cm, the highest. (5) £150-250

Provenance

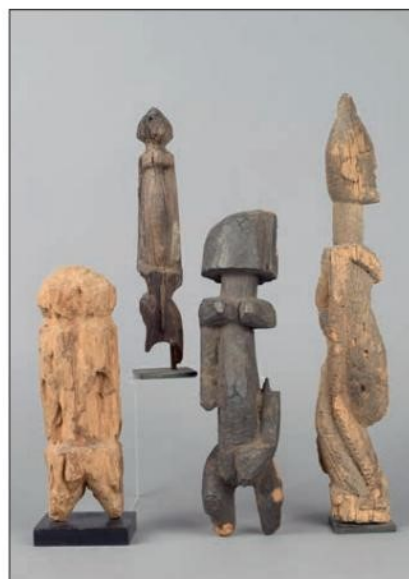
Seward Kennedy, London.

112. Three Dogon fragmentary figures**Mali**

wood, two on stands, 28.5cm the highest, and a Moba figure, on a stand. (7) £100-150

Provenance

Seward Kennedy, London.



112



113

113. A Bambara *chi wara* antelope headaddress**Mali**

wood, with termite losses, 87cm high, and three other Mali fragmentary pieces, including two figures and a staff. (4) £150-250

Provenance

Seward Kennedy, London.

114. Six headrests**East and South Africa**

wood, one with applied copper, 19cm, the highest. (6) £200-300

Provenance

Seward Kennedy, London.

115. A Ngombe backrest / stool**Democratic Republic of Congo**

wood with brass studs and aluminium, pierced and with carved linear decoration, 53.5cm long, with two Lobi tripod stools and a tripod chair. (4) £150-250

Provenance

Seward Kennedy, London.



114



115



116. A Nok head

Nigeria

terracotta,
6.5cm high, on a stand,
two Nok heads, a life fragment and a terracotta head. (6) £150-250

Provenance

Seward Kennedy, London.



117. A Nok bust

Nigeria

terracotta, in two parts with a ribbed coiffure and multi strand neck
piece,
11.5cm high,
a Nok terracotta body, 31cm high and a terracotta head. (8) £200-300

Provenance

Seward Kennedy, London.



118



119

118. A Nigerian coiled serpent

terracotta,
8cm long,
a similar stoneware serpent, a Nigerian
terracotta fragment with a relief mudfish
and a stone fragment with relief carving. (4) £150-250

Provenance

Seward Kennedy, London.

119. An Ashanti stool

Ghana

wood, with a pierced oval finned support,
24.5cm high,
a Pokot stool and a Lobi stool. (3) £150-250

Provenance

Seward Kennedy, London.

120. A Tellem door panel

Mali

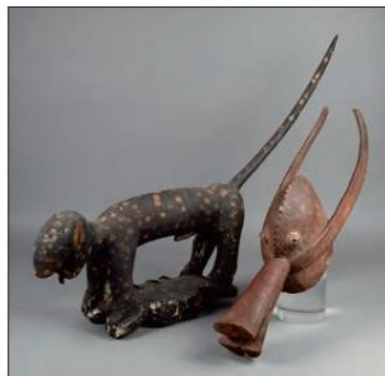
wood, with a central rectangular boss,
21.5cm high, on a stand,
a Nigerian kola nut box and cover and a
carved and pierced mirror frame, with a
decorated back and signed *Ivan*
Wuratomoolere. (5) £200-300

Provenance

Seward Kennedy, London.



120



121

121. A Nigeria/Cameroon leopard

wood, with painted spots and mirrored
glass eyes, probably a head crest,
85cm long,
and a Mama animal mask, with cowrie shell
eyes. (2) £150-250

Provenance

Seward Kennedy, London.

122. A Dogon door**Mali**wood, one panel carved a pair of breasts,
145.5cm high, 58cm wide.

£200-300

*Provenance**Seward Kennedy, London.***123. A Dogon fragmentary horse and rider****Mali**wood, the male figure with his left arm raised to his head,
25.5cm high,
a Yoruba equestrian group, a Dogon group and another group. (4)

£400-600

*Provenance**Seward Kennedy, London.***124. An Ashanti stool****Ghana**wood with brass studs,
29cm high.

£150-250

*Provenance**Seward Kennedy, London.*

123



124

**125. Eight Yoruba divination boards****Nigeria**wood, seven circular with a carved mask, animals, shells and
symbols, and one rectangular with concave sides,
38.5cm diameter and smaller. (8)

£300-400

*Provenance**Seward Kennedy, London.***126. Seven Dogon miniature ladders****Mali**wood, with an encrusted patina,
56cm the highest,
and two Dogon shrine objects, of stepped form, on bases. (11)

£300-400

*Provenance**Seward Kennedy, London.*



127

127. A Dogon door

Mali

wood, with a lock,
151.5cm high, 65cm wide.

£200-300

Provenance

Seward Kennedy, London.

128. A Yoruba divination tapper

Nigeria

wood, with a kneeling female terminal, with
a bead necklace,
30.5cm long,

A Yoruba carved kneeling female with an
offering bowl, a figural cover, a shango
amulet with cowrie shells and a shango
staff. (5)

£150-250

Provenance

Seward Kennedy, London.

**129. An Ashanti Colon standing male
figure in the manner of Osei Bonsu**

Ghana

wood, and wearing blue shorts,
49.5cm high,
and a Bambara female figure, a Mossi doll,
a Kota janus reliquary, a carved animal and a
figural staff. (6)

£300-400

Provenance

Seward Kennedy, London.



128



129

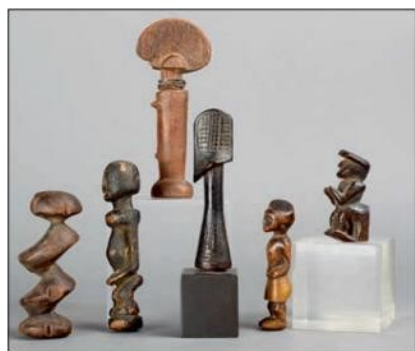
130. Six miniature figures

including a Dogon amulet with an
encrusted patina, a Kwere doll, with beads,
a Colon figure, wearing shorts and three
others, one on a stand,
11cm the highest. (7)

£100-150

Provenance

Seward Kennedy, London.



130



131

131. Four African female figures

wood, including two Nigerian with red
paint, another Fante with remains of white
pigment and an Cameroon pulley, an
Indonesian standing figure and a Baule
catapult, both on stands,
28cm the highest. (8)

£100-150

Provenance

Seward Kennedy, London.

132. Seven Yoruba divination boards**Nigeria**

wood, with carved masks, animals, a kneeling figure and symbols, one with red and white pigment and carved a head smoking a pipe, 44cm wide and smaller. (7)

£300-400

Provenance

Seward Kennedy, London.



132

133. A West African mancala board

wood raised on a central column with thirty two wells, 58cm wide, with a forty two ivory and bone counters, with incised linear and dot markings. (43)

£100-200

Provenance

Seward Kennedy, London.



133

134. An Ethiopian chair

wood and hide, with pierced and carved decoration, 69.5cm high, and another Ethiopian wood chair. (2)

£100-200

Provenance

Seward Kennedy, London.



134

135. A Dogon ladder**Mali**

wood, 153.5cm high, on a stand. (2)

£300-400

Provenance

Seward Kennedy, London.



135



136 part

136. Nine Yoruba staffs

Nigeria

iron, with bird finials, conical bells, three with molten core spheres and another staff with a figural finial, the highest 135.5cm. (10)

£200-300

Provenance

Seward Kennedy, London.



137 part

137. Ten Yoruba staffs

Nigeria

iron, with bird finials, conical bells, four with molten core spheres, the highest 148cm. (10)

£200-300

Provenance

Seward Kennedy, London.



138 part

138. Ten Yoruba staffs

Nigeria

iron, with figures, birds and conical bells, the highest 131.5cm. (10)

£150-250

Provenance

Seward Kennedy, London.

**139. A collection of African currency**

including four Chamba iron torques, two Yoruba brass rattle anklets, two Yoruba twisted torques, four Yoruba ceremonial rattles and other torques and anklets. (24) £300-400

Provenance

Seward Kennedy, London.

**140. Nine Yoruba bell staffs / currency
Nigeria**

iron, six with multiple conical bells, the highest 72cm. (9) £100-200

Provenance

Seward Kennedy, London.

**141. Ten African currency hoes / blades
Nigeria and Democratic Republic of Congo**

including a large Afo hoe, 58cm high, and Idoma, Bangala and Poto. (10) £200-300

Provenance

Seward Kennedy, London.

**142. Two Kwele currency blades
Democratic Republic of Congo**

iron, of arrowhead form, 51cm the longest, and eight ceremonial hoes, Nigeria and Sudan. (10) £150-250

Provenance

Seward Kennedy, London.

143. A Congo currency crescent

bronze, and faceted with collection number 2120, 21cm wide, and two other similar, one with linear decoration to the top and two bronze currency bangles. (5) £300-400

Provenance

Seward Kennedy, London.



143

144. Six currency blades / knives

Democratic Republic of Congo and Nigeria
iron, copper, aluminium and hide, including a Mbugbu knife with incised linear borders, two Matakam knives, a Ngombe blade with remains of painted decoration, 61.5cm the longest. (7) £100-200

Provenance

Seward Kennedy, London.



144



145



146

145. A Dan mask

Ivory Coast

wood, with large circular eyes and white pigment, 22cm high, and another Dan mask, previously with metal rings around the eyes. (2) £200-300

Provenance

Seward Kennedy, London.

146. A Lega mask

Democratic Republic of Congo

wood, with white pigment, 20.5cm high, and two Eket small masks, one bordered with cloth to the back. (3) £150-250

Provenance

Seward Kennedy, London.



147



148

147. A Songye kifwebe mask

Democratic Republic of Congo

wood, with black stain and kaolin, 33.5cm high. £200-300

Provenance

Seward Kennedy, London.

148. A Bambara marionette

Mali

wood, with white, black and red paint, 75.5cm high, on a stand, and a Bedu style plank mask. (2) £150-250

Provenance

Seward Kennedy, London.



149



150

149. A Yoruba male Ibeji

Nigeria

wood, with a crested coiffure, pierced ears and wearing a loin cloth, the underside signed with an incised X and with a painted collection number RC579, 21cm high. £100-150

Provenance

Seward Kennedy, London.

150. Three Yoruba Ibeji

Nigeria

wood with beads, cowrie shells and metal bands, two male and one female; two with remains of Reckitt's blue, 28cm, the highest. (3) £150-250

Provenance

Seward Kennedy, London.

151. An Igbo door**Nigeria**

wood, with deep carved concentric circles and chevrons,
101.5cm high, 46cm wide. £150-250

Provenance

Seward Kennedy, London.

152. A Uganda textile beater

wood, of mallet form with two sides curved and having incised
grooves, 32cm high. £80-120

Provenance

Seward Kennedy, London.

153. A Yoruba divination bowl**Nigeria**

wood, with a kneeling maternal figure with a child on her back and
a male drummer, 26.5cm high. £100-200

Provenance

Seward Kennedy, London.

154. A Yoruba Eshu amulet**Nigeria**

wood, with a worn face with remains of white pigment, with a
leather strap and a ring and cowrie shell strands,
10.5cm high,
and two other Yoruba amulets, one with shells and bell, the other
with a leather and glass bead cloak. (3) £300-400

Provenance

Seward Kennedy, London.

155. A Yoruba divination bowl**Nigeria**

wood, carved with a chicken and snake support,
19.5cm high,
and three other Yoruba divination bowls, carved with mudfish, a
kneeling female figure and four male and female supports. (4)
£300-500

Provenance

Seward Kennedy, London.



151



152



153



154



155



156. Eight Yoruba staffs

Nigeria

iron, including three Osanyin, two with mounted figures, the highest 83.5cm. (8)

£200-300

Provenance

Seward Kennedy, London.



157. Fifteen Yoruba staffs

Nigeria

iron, the majority with bird finials, the highest 79cm. (15)

£100-200

Provenance

Seward Kennedy, London.



158. A Zulu snuff bottle

South Africa

gourd and beadwork, with a stopper, 10.5cm high, a Masai snuff container, horn, hide, beads and wire and a group of seven Zulu beaded 'insect' snuff containers. (11)

£100-200

Provenance

Seward Kennedy, London.



159. A Yoruba Ibeji jacket

Nigeria

cowrie shell and cloth, 33cm wide, and five other cowrie shell decorated items including, a Luba conical hat, a Yoruba circular basket, a spherical basket and cover, a waistband and a neckband. (7)

£200-300

Provenance

Seward Kennedy, London.



160. Five Zulu pipes

South Africa

wood, one with beadwork, 36cm the longest, and three other pipes with carved masks to the bowls and two with rows of figures along the shaft, probably Philippines, and a Meerschaum pipe bowl. (9)

£100-200

Provenance

Seward Kennedy, London.

161. Five Yoruba female Ibeji

Nigeria

wood, with remains of Reckitt's blue; one missing a breast and foot, Igbomina, 26cm high. (5)

£400-600

Provenance

Seward Kennedy, London.





162. Ten Yoruba Osanyin staffs

Nigeria

iron, with a central bird and differing surrounds, the highest 65.4cm. (10)

£100-200

Provenance

Seward Kennedy, London.



163. Ten Yoruba Osanyin staffs

Nigeria

iron, all with a central bird and the majority surrounded by a circle of smaller birds, the highest 64cm. (10)

£200-300

Provenance

Seward Kennedy, London.

164. A collection of beadwork

Nigeria, Cameroon and Zulu

including neck and waist bands, earrings, a bag, a staff, a beaker, a Fali doll, a divination tapper, another bag dated 1954 and a Yoruba ibori, 18cm high. (a lot)

£200-400

Provenance

Seward Kennedy, London.



164



165. Six Oromo pendants

Ethiopia

bone with impressed dot and circle decoration, with suspension hole, 13cm the longest, four tooth-like pendants and two smaller with carved decoration. (12)

£100-200

Provenance

Seward Kennedy, London.



166. Eleven ivory feathers possibly Nigeria

each with a ribbed reverse, the longest 42.5cm, and ten bone feathers with incised decoration and with an attachment hole. (21)

£200-300

Provenance

Seward Kennedy, London.



167



168

**167. A Yoruba currency gong
Nigeria**

iron, of tapering form with a loop handle, 92.5cm high, another smaller and a Gabon gong. (3) £100-150

*Provenance
Seward Kennedy, London.*

**168. Four Dogon standing figures
Mali**

iron, and a currency blade, three staffs, two smaller figures, a cross and an Oriental staff finial with incised script, the highest 85cm. (11) £100-200

*Provenance
Seward Kennedy, London.*



169



170

**169. A Turkana shield
Kenya**

metal with a hide bound wood handle, 62cm high, with a small collection of currency, including three Kirdi double scrolls, two Mumuye rods, a Nigerian hoe. (15) £100-200

*Provenance
Seward Kennedy, London.*

170. Eight Nigerian lamps

iron, including six hanging types, a stake type and one with an animal base, the highest 72.5cm. (8) £100-200

*Provenance
Seward Kennedy, London.*



171



172

**171. Six Nigerian / Mali
zoomorphic ironworks**

including one with polychrome decoration and a bird in a tree finial, an antelope group, an antelope head finial and a bird, the highest 51.5cm. (6) £100-200

*Provenance
Seward Kennedy, London.*

**172. Three Ethiopian
prayer/healing scrolls**

parchment, with images of saints and with text, 70cm, 74cm and 133cm long. (3) £80-120

*Provenance
Seward Kennedy, London.*



173. Twenty Mali/Burkina Faso bangles
black and white veined stone, three with metal repairs,
12.5cm diameter and smaller. (20)

£400-600

Provenance
Seward Kennedy, London.



174. Three Ekonda currency bands
Democratic Republic of Congo
bronze, with finned ridges,
27cm, 15cm and 11cm long. (3)

£600-800

Provenance
Seward Kennedy, London.



175. Four Mbole currency anklets
Democratic Republic of Congo
copper,
15cm - 26cm diameter. (4)

£300-400

Provenance
Seward Kennedy, London.



176. Two Yoruba currency torques
Nigeria
bronze,
25cm and 20cm wide,
four bronze king and queen manillas and a Congo bronze torque
with geometric decoration. (7)

£400-600

Provenance
Seward Kennedy, London.



177. Sixteen African bangles
bronze, copper, aluminium and brass of circular and
crescent form with differing designs,
12cm the widest. (16)

£200-300

Provenance
Seward Kennedy, London.



178. Six coiled armbands
copper and brass, and four Yoruba twisted brass currency armbands, three with
central knots and two bronze bangles with incised linear decoration. (12)

£200-300

Provenance
Seward Kennedy, London.



179. Twelve Nigerian bells

bronze, including an Igbo example of waisted form with double scroll motifs; two with masks; one with a handle and four miniature, four clappers missing. 25cm the highest. (12)

£300-400

Provenance
Seward Kennedy, London.



180. A Benin style serpent head
Nigeria

bronze, with raised eyes and linear symbols, the open mouth exposing sharp teeth, 24cm long.

£100-150

Provenance
Seward Kennedy, London.



181. Six Yoruba armbands
Nigeria

bronze, cast with differing masks, symbols and figures; three pierced, one of which is hung with bells and another plain with three bands each with three pierced flanges, 12cm, the longest. (6)

£300-400

Provenance
Seward Kennedy, London.



182. A large collection of Kissi Penny currency
Sierra Leone

iron, some tied in bundles, and a small group of Buji currency, 54cm long and smaller. (approx 330)

£400-600

Provenance
Seward Kennedy, London.



183



184

183. Four Kirdi cache sex
Cameroon

iron, aluminium and fibre with red ochre, 17cm the widest. (4)

£300-400

Provenance
Seward Kennedy, London.

184. An Ashanti kuduo / gold dust box
Ghana

bronze, of circular form, on an open base and with stylized decoration, the cover with a ring handle, 17.5cm high, and another of cylindrical form with a domed cover. (4)

£100-150

Provenance
Seward Kennedy, London.



185

185. An Igbo anklet**Nigeria**

brass, of disc form with incised and punched geometric decoration, 32.5cm diameter.

£300-400

Provenance

Seward Kennedy, London.

186. A collection of Ashanti gold weights**Ghana**

brass with cast geometric designs, the longest 6cm. (106)

£100-200

Provenance

Seward Kennedy, London.

187. Seven Berber hair ornaments**Morocco**

metal, including three pairs; with ring bases and tiered platforms with spire finials, three with enamel remains, the highest, 7.5cm,

with a collection of metal rings, Ashanti, Dogon, Ethiopia and an aluminium hair pin. (29)

£400-600

Provenance

Seward Kennedy, London.

188. A collection of Ashanti gold weights**Ghana**

brass, including a sword, a stool, two chairs, three shields, geometric examples, animals and figures, together with three spoons, a kuduo lid with leopards, a cockerel, a seated dog and a kneeling figure and other West African brass items, the longest 12.2cm. (a lot)

£100-200

Provenance

Seward Kennedy, London.



186



187



188



189. A collection of hardstone and coloured glass bead necklaces. £200-300

Provenance
Seward Kennedy, London.

189



190



191



192

190. A large collection of loose and strung beads hardstones, metal and glass, including a eleven skulls, two Peruvian necklaces and a pair of Fulani gilt metal earrings. (a lot) £100-200

Provenance
Seward Kennedy, London.

191. A collection of hardstone and glass bead necklaces Naga and Africa and shell, clay and metal and a fabric bag with a brass handle. (a lot) £100-200

Provenance
Seward Kennedy, London.

192. Six African glass seven-layer Venetian trade beads faceted, the longest 4.5cm, nine similar six-layer beads, and another on an iron neckpiece, together with eight various glass beads. (25) £150-250

Provenance
Seward Kennedy, London.



193. A large collection of coral

including a necklace with brass disc spacers, various wire and metal bound pieces, cylindrical pieces pierced through the centre, and various other hardstone and glass beads, and two pieces of amber. (a lot)

£200-300

Provenance

Seward Kennedy, London.



194. A collection of glass trade beads

millefiori, plain, ribbed and layered. (a lot)

£150-250

Provenance

Seward Kennedy, London.



λ 195. **Seven Yoruba divination heads**

Nigeria

ivory and bone, six with conical headdresses and two with filed teeth; one with a diced coiffure with resin, the highest 9.6cm. (7)

£300-400

Provenance

Seward Kennedy, London.



λ 196. **Six Yoruba divination heads**

Nigeria

ivory, bone and horn, with conical headdresses, two with filed teeth, the highest 10.2cm. (6)

£300-400

Provenance

Seward Kennedy, London.



λ 197. **Three Dinka bracelets**

Sudan

ivory, two with central moulded edges and the other with a finned edge, 14cm the widest, and two West African ivory bracelets, early 20th century. (5)

£200-300

Provenance

Seward Kennedy, London.



λ 198. **Thirteen West African bangles**

bone and ivory, two with impressed dot decoration and two with metal repairs, 16cm long and smaller. (13)

£100-200

Provenance

Seward Kennedy, London.



λ 199. **A collection of eight African bangles**

ivory, including an Ethiopian example with incised bands and a wood and brass spacer, 11cm wide, another with three lines, one with waisted sides and five plain Nigerian examples. (8)

£300-500

Provenance

Seward Kennedy, London.



λ 200. **A collection of ten West African bangles**

ivory, 13.6cm diameter and smaller. (10)

£150-250

Provenance

Seward Kennedy, London.



λ 201. A Dinka pendant

Sudan

bone of curved elliptical form with impressed dot decoration and three attachment holes, 27cm wide, two Dinka ivory rings, two Ovambo omakipa clasp buttons, three Mangbetu hair pins and four rings/ornaments. (12)

£300-500

Provenance

Seward Kennedy, London.



λ 202. Two Gurunsi armbands

Burkina Faso

ivory, of rectangular curved form with a central aperture, early 20th century, 21cm and 17cm long. (2)

£500-800

Provenance

Seward Kennedy, London.



203

λ 203. A group of eight ear plugs

Naga, India and Africa

ivory, one with dot decoration to the sides, 5cm diameter and smaller. (8)

£200-300

Provenance

Seward Kennedy, London.



204

λ 204. A group of seven Karen ear plugs

Burma

five ivory, and of elongated spool form and two bamboo of natural form, 10.5cm the longest. (7)

£300-500

Provenance

Seward Kennedy, London.

205. Two Surma lip plugs

Ethiopia

wood, of domed form with a concave moulded border and a raised point to each side, 13.7cm the widest. (2)

£150-250

Provenance

Seward Kennedy, London.



205



206

206. A collection of twelve African knives

four with scabbards; one Kuba with a copper blade, two Baule with shell attachments, one Somali with an ivory handle, a Tutsi sickle with a beadwork handle, one Shona with brass wirework and six others, the longest 44.5cm. (16) £400-600

Provenance
Seward Kennedy, London.

207. A continental iron axe head

39cm long, on a stand. (2) £100-200

Provenance
Seward Kennedy, London.



207



208

208. A Kirdi shield
Cameroon

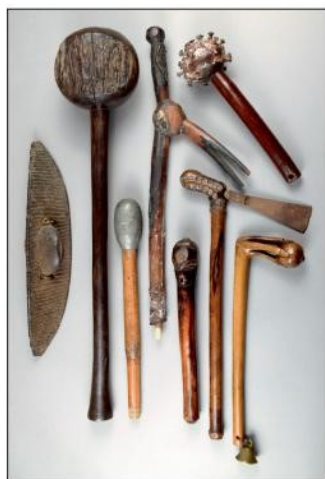
metal, of arched curved form with embossed dots and metal handle, 91.5cm high, and a Kalinga wood shield, with woven fibre binding and an integral handle, 95cm high. (2) £150-250

Provenance
Seward Kennedy, London.

209. A Zulu knobkerrie
South Africa

wood, of large proportions, 65cm long, a nail head club, another with a talon grasping a sphere with a brass bell, another with a lead head, a South African axe, a West African staff, an axe handle and a miniature Rwanda dance shield. (9) £150-250

Provenance
Seward Kennedy, London.



209



210

210. A group of nine archaic blades

mainly bronze, including three Chinese halberds, two axe heads and three spear tips, the longest 42cm. (9) £150-250

Provenance
Seward Kennedy, London.



λ 211. A small group of Indonesian knives

steel, copper, brass, wood and horn; and a Javanese patterned kris blade, a Persian khanjar, one with a two skin blade, an Indian betel nut cutter and a barbed spear head, the longest 43.5cm. (10)

£100-200

Provenance

Seward Kennedy, London.



212. A Japanese arrowhead

early 20th century

steel with a pierced tsugaru mon, signed, the blade, 12cm long, with a collection of seven other differing blades/spear heads. (8)

£200-300

Provenance

Seward Kennedy, London.



λ 213. A group of twelve knives

America, Europe and Africa

including a bowie type hunting knife, a stiletto type with applied crosses, stars and an arrow to the bone handle, one with an aluminium pistol and machine gunner handle, another with a pewter inlaid handle and another with an inscribed faceted bone handle, the longest 27cm. (13)

£200-300

Provenance

Seward Kennedy, London.



λ 214. A collection of penknives

including ten with ivory or bone scales, one unusual type with four blades; six with mother of pearl scales; nine with antler scales; four with horn scales; three combination type, one including a fork, whistle and corkscrew; four novelty types; one with tortoiseshell scales; nine others, a brass cased fleam stamped J.HALL, a pair of miniature folding scissors, three cased cut throat razors, a large carpet needle, a double ended cased steel, a knuckle duster and two modern penknives, the longest 20cm. (61)

£400-600

Provenance

Seward Kennedy, London.



215. Nine Nepal ghurras
wood, in varying designs, three with zoomorphic finials, 39cm the longest, and a Nepal staff finial, carved as a tower, on a stand. (11) £200-300

Provenance
Seward Kennedy, London.

The ghurra has become a deeply symbolic object to the mountain people of Nepal. From the simple function of supporting the churn rod whilst making butter, the traditional rope has evolved into these small wooden sculptures with abstract geometric elements evoking the gods of the Hindu pantheon.



217



218

46



216. Four carved panels
Nepal/Tibet
wood of differing designs with deities, beasts and scrolls, three with remains of gilt and two with remains of red pigment, the largest 11 x 43.5cm. (4) £100-200

Provenance
Seward Kennedy, London.

217. Twenty five spoons and ladles
including Indonesia, Africa, Papua New Guinea
wood, horn, coconut shell and bamboo, 39.5cm the longest. (25) £300-500
Provenance
Seward Kennedy, London.



219

218. A set of six miniature ladles
bone, 19th century, 16.5cm long, a Sami spoon, three smaller spoons, a bone and brass mounted scraper, a carved horn handle modelled as a hoof, an antler root with wire mesh, two horns, an Inuit walrus ivory scraper, a bone scraper inscribed J.KNIGHT, a bone handle inscribed 1774 E, a walrus ivory implement and a thin bladed implement. (20) £100-200

Provenance
Seward Kennedy, London.

219. Two pairs of Kalinga bawisak ear ornaments
Philippines
mother of pearl with beads, 5.7cm the widest, three similar ear ornaments, a Chinese Yao bone comb, with a pom-pom and beads, a Javanese marine ivory kris handle, five Philippines mother of pearl necklace panels, a tooth ornament, a bone tablet book, a wood figural handle, a bone handle, a bone, shell and feather ornament and other bone and shell ornaments. (a lot) £200-300

Provenance
Seward Kennedy, London.

220. A small collection of Inuit implements
Alaska
marine ivory, including a bow drill fragment, a club, a scraper, a seal head, needle cases, a double ended pestle, a harpoon attachment, a bag attachment inscribed 1771, HAS, a double pestle, a knife, a handle, an amulet and two stylised carvings, 23.5cm the longest. (15) £150-250

Provenance
Seward Kennedy, London.



220



221. A carved wood perched bird probably Pacific

with a long beak with a barbed end, 13.5cm high, on a perspex block, a Zulu carved wood bovine animal, a Pacific carved nut vessel, a hardwood four legged bowl and a central American carved gourd bowl, with scrolling foliage bands with initials *MLS*. (5) £100-200

Provenance

Seward Kennedy, London.

222. Five gilt bronze figures Tibet

including two dancing and two with turquoise mounts, with fourteen bronze items, including a hand, three lion dogs, a seal, a circular frame, two double ended sceptres, a head, three finials, a mount with heads and a fragment with hair tied heads and skulls, the longest 18.5cm. (19) £200-300

Provenance

Seward Kennedy, London.



222

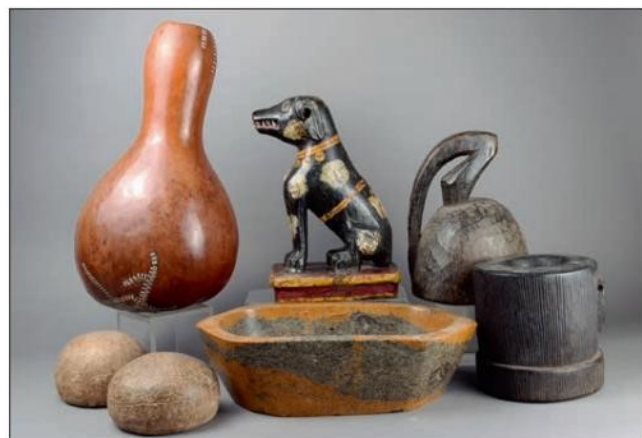


223. Three horn goblets late 19th / early 20th century

the highest 18.7cm high, a coconut goblet with a brass rim and an ivory stem and ebonised wood base, 19th century, two nut snuff containers with silver coloured metal and bone mounts, and an embossed silver coloured metal panel depicting Abraham sacrificing Isaac with the Angel above and a banner with *DEVVS VIDE*, marked *SRZ* and *G* with an eagle above, 46 x 28cm. (7) £300-500

Provenance

Seward Kennedy, London.



224. An Indian hardstone opium mortar

in variegated yellow and grey with an oval interior and pointed exterior ends, 37.5cm long, an African gourd with aluminium repairs, an Oromo mortar, an Indian seated dog, a West African sculpture with a stylised bird head and two African clay domes. (7) £200-300

Provenance

Seward Kennedy, London.

225. A Chinese Han style pigsty model

pottery, with steps leading to a small roofed building and an open courtyard, 18cm high. £100-150

Provenance

Seward Kennedy, London.



225



226. Thirty nine African bangles

bronze, brass, copper, stone, including examples cast with masks and animals, another with cowrie shells. (39)

£200-300

Provenance

Seward Kennedy, London.



227. Five walking canes

with ivory handles, including a fist clenching a baton with a silver plated collar and ebonised hardwood shaft, 89.5cm long,

a riding crop type with a presentation collar to *Thos Burns* dated 19th June 1880, with a malacca shaft, a 1920's example with a geometric marquetry shaft, a 19th century malacca example with a carved handle with animals and birds in a tree, and a 9ct gold mounted cane, 1920. (5)

£300-400

Provenance

Seward Kennedy, London.

228. Four Archaistic style bronze vessels including an ovoid jar with three handles, a bowl with four ring handles, a container with pinched sides with a bar handle and a rectangular censer and cover with a bands of scroll symbols, the highest 26cm. (5) £200-300

Provenance
Seward Kennedy, London.



228



229. Six walking canes

including one with an ivory ball handle initialled H.H., with a silver collar, 1904 and an ebonised hardwood shaft, 87cm long, a 19th century example with a twisted wood shaft and ivory domed handle with inset brass discs, another with a hooked marine ivory handle, a tapering bone example, a Victorian cane with a lapis lazuli ball handle and a ribbed marine ivory example with a silver coloured metal collar initialled W.W.W. (6) £300-400

Provenance
Seward Kennedy, London.

**230. Five bone implements
Papua New Guinea**

including one with a stylised human head, another with incised decoration, the longest 28cm, and a bone pestle, a curved bone spike with metal attachment, a mammoth tooth snuff container, and three bone handles, one inscribed FINSBURY. LONDON.E.C. F.CORNER.COLL. (13) £200-300

Provenance
Seward Kennedy, London.



230



231

**231. A Lega spoon
Democratic Republic of Congo**

bone with a incised decoration, 16cm long, a Congo ivory knife handle, a Nigeria ivory divination tapper, a bone ornament, a bone bottle shaped mortar pendant, an ivory pestle, an ivory needle ornament and a needle, two Fiji marine ivory pendants, a marine ivory 'testicles' ornament, possibly Austral Islands, an ivory ovoid pendant and two carved ivory corn cobs. (13) £200-300

Provenance
Seward Kennedy, London.



**232. A Papua New Guinea breast ornament
Melanesia**

shell, the top edge with incised dots and with a fibre band, 28.5cm high, a Naga leather and shell belt, two heavy shell currency necklaces, a bone armband and eight shell currency rings. (13) £200-300

Provenance
Seward Kennedy, London.



233. A collection of Pacific shell and tusk currency necklaces and armbands
and two vertebrae necklaces and a small fibre box with mother of pearl and coconut. £100-200

Provenance
Seward Kennedy, London.



**234. A large collection of shell ornaments
mainly Pacific**

including Solomon Islands mother of pearl pectorals, a shell decorated fish and birds, spoons, two nose ornaments, currency, a turtle shell armband, three Barava fragments, two fish hooks, an Australian Aboriginal mother of pearl pectoral and three necklaces. (a lot) £300-400

Provenance
Seward Kennedy, London.



**235. A collection of Naga ornaments
Northern India**

shell with linear, circle and dot decoration, including a group of five pendants, ear ornaments, necklace batons and three mother of pearl panels, two with semi precious stone mounts. (33) £200-300

Provenance
Seward Kennedy, London.

236. A Solomon Islands comb**Melanesia**

reed, mother of pearl, fibre and gum,
24cm long,
and a Papua New Guinea bamboo comb, with burnt and lime
decoration. (2) £300-400

Provenance

Seward Kennedy, London.



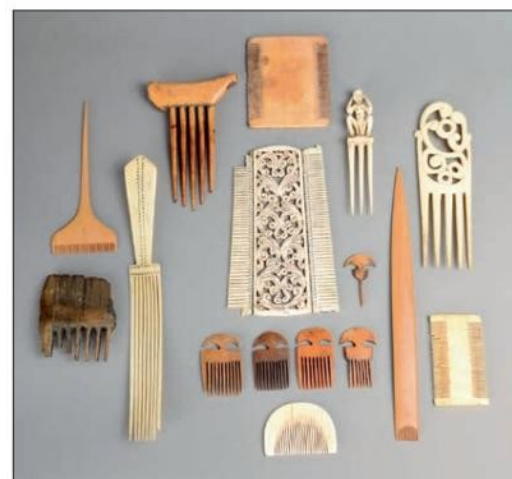
236

237. A collection of fifteen combs**Africa, Asia and Europe**

ivory, bone and wood, including a Baule example with five prongs,
four Nigerian miniature combs and a hair pin, two Japanese
boxwood combs and one with a seated male finial,
21.6cm the longest. (16) £200-300

Provenance

Seward Kennedy, London.



237

238. Two Papua New Guinea combs**Melanesia**

turtle shell, with pierced holes and impressed dots,
25.6cm the longest,
and a scraper, carved a mask and geometric bands to one side. (3) £150-250

Provenance

Seward Kennedy, London.



238



239

239. An Aboriginal bullroarer

Australia

wood, with linear geometric decoration and an adzed back, 25cm long, and two Aboriginal boomerangs. (3) £150-250

Provenance

Seward Kennedy, London.



240



241

240. An Aboriginal boomerang club

Eastern Australia

wood, with fine linear decoration to one side and adze grooves to the other, 92.5cm long. £200-300

Provenance

Seward Kennedy, London.

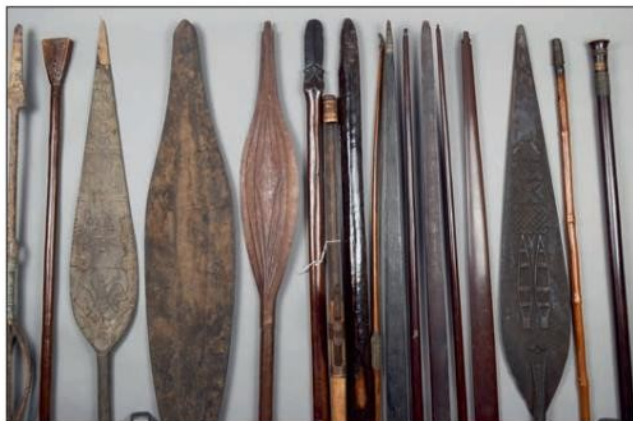
241. A Samoa hand club

Polynesia

wood with incised and lime filled decoration, 43cm long, a Pacific greenstone blade adze with a wood handle and fibre bound, a Sepik Yam mask, an Indonesian food hook and a Papua New Guinea bullroarer. (5) £300-400

Provenance

Seward Kennedy, London.

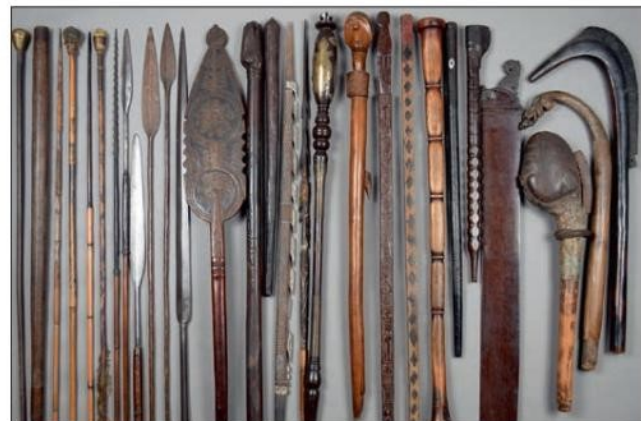


242. A collection of bows, paddles, staffs and clubs

including a palmwood bow, four hardwood bows possibly South American, a short bow with horn tips, two Benin jekri paddles, two Indonesian paddles, a Maori taiaha, an Aboriginal sword club, two staffs, a Sepik River spear thrower, an Ibo iron and brass tittle spear and a blow pipe, the longest 206.5cm. (17) £100-200

Provenance

Seward Kennedy, London.



243. A collection of staffs, spears and clubs

including a South African staff with a head finial and two horns to the back of the shaft, four African spears, four Pacific spears, a Tiwi barbed spear fragment, a whistle arrow, a ribbed bone staff, a West African staff carved with figures, animals and rifles, a Chokwe club, a Fiji swagger stick with silver coloured mounts, Indonesian staffs, an African club with a head finial, a West African staff and a hardwood pipe shaft, the longest 137.5cm. (28) £100-200

Provenance

Seward Kennedy, London.



244

244. A Japanese shell trumpet *horagi*

the edge pierced for attachment and with a lacquered mouthpiece, 31cm long. £200-300

Provenance

Seward Kennedy, London.

λ 245. A Fiji tabua

Melanesia

sperm whale tooth, with suspension holes, late 19th / early 20th century, 16.5cm long. £150-250

Provenance

Seward Kennedy, London.

246. A Malatia Island club

Solomon Islands, Melanesia

wood, with a lozenge shape head having medial ridges and with a tapering handle, previously bound, with a crescent shape butt, 75cm long. £600-800

Provenance

Seward Kennedy, London.



246



245



λ 247. An Inuit pectoral
Bering Sea
 walrus ivory, with crescents and one side with facets and pierced attached holes, 13.3cm long. £300-500
Provenance
 Seward Kennedy, London.

247



λ 248. A Inuit figural amulet
Alaska
 walrus ivory, with deep drilled eyes and with open arms and legs, 71.1cm high, an Inuit miniature stylised figure and two other stylised amulets. (4) £200-300
Provenance
 Seward Kennedy, London.



λ 249. Two Inuit wrist guards
Alaska
 walrus ivory, with incised linear decoration and pierced attachment slits, 10cm and 8.5cm long, and a similar implement with five relief spikes, 11cm long. (3) £400-600
Provenance
 Seward Kennedy, London.



λ 250. An Inuit scrapper
Alaska
 walrus ivory, with a whale tail handle and incised linear image of the whale with a serrated end, 11.3cm long, an Inuit marine ivory comb, with a hand written label *Grass Comb Pt. Hope*, and two Inuit ornaments. (4) £100-200
Provenance
 Seward Kennedy, London.



λ 251. Eight Inuit harpoon heads
Alaska
 walrus ivory and bone, one with an stone tip, 19cm the longest. (8) £200-300
Provenance
 Seward Kennedy, London.



252. Two Inuit labrets

Alaska

marine ivory, of oval and flared conical form, 4cm long and 2cm high, an Inuit walrus ivory fishing lure with inset lead, a seal shaped amulet, a larger whale shaped toggle, a finial with incised chevrons, three teeth amulets and four other amulets. (13) £300-400

Provenance

Seward Kennedy, London.



253. An Inuit scraper

Alaska

softwood, of ergonomic design, previously with a blade, with painted collection number 601, 13cm long,

an Inuit wood bow drill mouthpiece, carved as a seal, 14.5cm long, a carved handle with a seal head and flippers and a wood implement. (4) £200-300

Provenance

Seward Kennedy, London.



254

254. Three Inuit net needles

Alaska

walrus ivory, with attachment holes, 38cm the longest, and an Inuit arrow making implement. (4) £100-150

Provenance

Seward Kennedy, London.

255. A Haida totem carving

North West Coast

wood, with a climbing bear with polychrome decoration, 35.5cm high, and a Inuit model kayak, wood, hide and marine ivory, 47cm long. (2) £100-200

Provenance

Seward Kennedy, London.



255

OTHER PROPERTIES



256

256. An Inuit pair of snow goggles

Arctic

bone showing a zoomorphic transformation with a ridged brow and eye slits, 13cm wide, on a stand. (2)

£6,000-8,000

See Smithsonian Institute, USNM number E48996-0, for a similar wooden pair collected from Sabotnisky, Yukon River.



257

λ 257. An Inuit scrimshaw cribbage board

walrus ivory, modelled as a fish, each side decorated with a seal on an iceberg and the top pierced for markers, 1st half 20th century, 30cm long.

£200-300



258

λ 258. An Inuit scrimshaw walrus tusk

decorated a camp with tents and hut, whales, seals, walrus, birds, polar bears, hunters in a boat and a sleigh being pulled by dogs, early 20th century, 31.5cm long

£450-550

259. A Tlingit amulet

North West Coast

marine ivory carved as a seated figure with a beak-like head, with hands and feet together and with a raven's head between, 6cm long, with a stand. (2) *£1,500-2,500*



259



260

260. An Inuit standing figure

Arctic

bone, 8.5cm high, on a stand. (2) *£600-800*



260A

260A. An Inuit carved whale bone vertebra

Wakeham Bay

by Mitiajuk, with two masks and an arm, 42.5cm wide. *£150-200*

261. A Iroquois club

North East America

wood with an off centre root ball head with stitched vellum to the top of the shaft, the base pierced for attachment, 66cm long. *£50-150*



261



262

262. A North West Coast fish hook

bone with a curved iron nail, with fibre, 9cm high, on a stand. (2) *£100-200*

263. A North West Coast rattle

wood with polychrome decoration, modelled as an oyster catcher with abalone inset eyes and with a recumbent figure on its back, 33cm long. *£400-600*



263



264

264. A North American frog

marine ivory with inset baleen eyes, 6cm long. *£150-200*



265

**265. A pair of Yoruba female Ibeji
Nigeria**

wood with quadripartite and arched coiffure with Reckitt's blue, with large eyes with lashes, tripartite nose and bulging lips, scarifications, wearing glass and shell beads, on circular bases with linear incisions, 26.5cm high. (2) £500-800

Provenance

*Collected in the Nigeria during the 1950's.
cf. Zemanek-Munster, 31st October 2015 for a male and female pair by the same carver.*

**266. A pair of Yoruba male and female Ibeji
Nigeria**

wood with remains of Reckitt's blue to the raised coiffure, the stern looking faces with lashes and scarifications, the bodies with a brass bangle and beads and with abdominal scarifications, 26.7cm high. (2) £400-500

Provenance

Collected in the Nigeria during the 1950s.



266



267

**267. A pair of Yoruba male and female Ibeji
Nigeria**

wood with remains of Reckitt's blue to the quadripartite lobed coiffure, the worn faces with pierced ears, both wearing beads, 27.5cm and 25.2cm high. (2) £350-450

Provenance

Collected in the Nigeria during the 1950s.

**268. A pair of Yoruba female Ibeji
Nigeria**

wood with crested coiffure and with Reckitt's blue, facial scarifications and lashes, one eye with a metal pin, the abdomens, part of the back and the necks with further scarifications, with wrist bangles, 24cm and 24.5cm. (2) £150-250

Provenance

Collected in the Nigeria during the 1950s.



268



269

**269. A Yoruba male Ibeji
Nigeria**

wood with a five point coiffure and diamond shape eyes with facial scarifications and further scars radiating down from the umbilicus, with beads, possibly by Abegunde of Ede or his son, 28.2cm high. £300-400

Provenance

Collected in the Nigeria during the 1950s.

**270. A Yoruba male Ibeji
Nigeria**

wood with a high crested coiffure with remains of Reckitt's blue, with deep facial scarifications and with pins to the eyes, his back with diaper scars, 28.4cm high. £100-150

Provenance

Collected in the Nigeria during the 1950s.



270



271

**271. A collection of Zulu beadwork
South Africa**

including - five cylinder neckpieces, four waistbands with woven fibre backs and brass buttons, three waistbands with fabric backs and string, two pairs of anklets with brass buttons, six twin panel neckpieces, *one broken*, two cloth skirts, one hung with bells, a rectangular panel, a gourd cover and a plaited fibre neckpiece. (28)

£800-1,200

Provenance

Scottish collection.



273



272

**272. An Amhara shield
Ethiopia**

hide and silver coloured metal, circular with incised decoration with applied embossed panels and bosses, the reverse with a handle, all covered in red hide, 49cm diameter.

£600-800

273. Two Sudan haladie daggers

each with twin curved blades with Arabic script, with beadwork handle and sheaths, two hung with cowrie shells, 54cm long. (6)

£200-300

**274. A Kuba woman's hat, *mpaan*
Democratic Republic of Congo**

cloth, beads, cowrie shells and seeds, 40.5cm high, on a stand. (2)

£150-200



274



275



276



277



278



279



280

**275. A Shona headrest
Zimbabwe**

wood with zig-zag and triangle carving to the top and on twin supports with differing geometric carving, 19th century, 17.5cm high.

£250-350

*Provenance
Ex Museo da Azumbuja, Portugal.*

**276. A South African headrest
possibly Tsonga**

wood with a dished platform having drop ends, one with a wirework square, possibly the owner's identifying symbol, on a waisted reel stem and flared base, with a paper label inscribed *Kafir Pillow*, 13.5cm high.

£400-600

277. An East African mask

wood with linear scarifications and a rectangular mouth with incised teeth, 26cm high, on a stand. (2)

£100-200

**278. A Dan mask
Ivory Coast**

wood with applied brass studs and with pierced eyes, 27.5cm high.

£150-200

*Provenance
Ian Auld, London.*

**279. A Cameroon Grasslands blacksmith's helmet
mask**

Babungo / Babanki

wood with expressive facial features and a circular platform crest with thirteen inset arrowheads, black patina with red and white pigment, 50cm high, on a stand. (15)

£300-500

*Provenance
Maurice Joy, London.*

**280. A Dan passport mask
Ivory Coast**

wood with an encrusted patina, 11.6cm high.

£150-200



281

281. A Tsonga headrest
Mozambique

wood with a curved top with tapering end lifts on two column supports with a central platform and on a shaped base, with a blackened patina, 15cm high. £800-1,200

Provenance

Collected by Joan François Obbes (1869-1963), thence by descent.



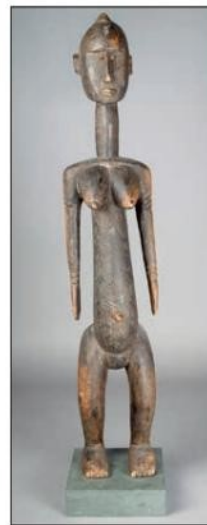
282

282. A Shona headrest
Zimbabwe

wood with carving to the top edges on pierced supports with a central oblong, the majority of the base missing, 12cm high. £300-400

283. A Bambara standing female figure
Mali

wood with a crested coiffure and pierced ears, nail eyes, a long neck, the body with scarifications, 80cm high, on a stand. (2) £200-300



283



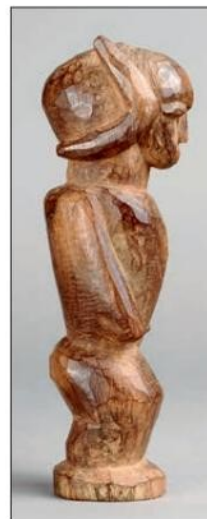
284

284. An Igbo Ikenga figure
Nigeria

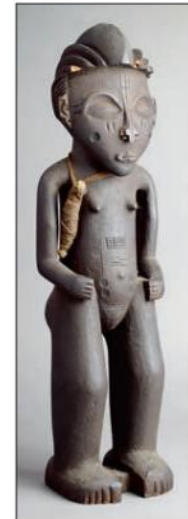
wood, seated and holding a head in his left hand, his face with scarifications and horned headdress, traces of pigment decoration, 63.5cm high, on a stand. (2) £100-150

Provenance

Freddy Joy, London.



285



286

285. A Lobi figure
Burkina Faso

wood with scroll horns, 14.5cm high. £200-250

286. A Chokwe standing female figure
Democratic Republic of Congo

wood with a blackened finish, 45cm high. £150-250



287



288



289

287. A Somba ladder

Togo

wood

168cm high, on a stand. (2)

£300-500

Provenance

Gordon Reece Gallery, London.

288. A Kuba pipe

Democratic Republic of Congo

wood and bone, with carved

decoration,

49cm long, on a stand. (3)

£80-120

Provenance

Collected by Eugene Reuze

whilst in the Congo, 1900 - 1904.

289. A Yoruba divination board

Nigeria

wood, rectangular with

concave sides, the raised

borders with central mask and

geometric panels,

40cm wide.

£150-200



290. A Dogon door lock

Mali

wood with twin figural finials and

incised decoration,

37cm high, on a stand. (3) £50-100

Provenance

Ian Auld, London.



291. A Kuba anthropomorphic cup

Democratic Republic of Congo

wood with black patina and a C shape

handle,

16cm high.

£120-160

Provenance

Collected by Eugene Reuze whilst in

the Congo, 1900 - 1904.



292. A Lega stool

Democratic Republic of Congo

wood with four angled supports,

23cm high,

and a smaller stool of dumbbell form, 18cm high and an

Oromo mortar, Ethiopia, 18.5cm high. (3)

£100-200

Provenance

The mortar - Ian Auld, London.

293. A pair of Barbara marionettes

Mali

wood, the female with a double crescent coiffure and remains of foil backed glass eyes, line scarifications, an open mouth and prominent breasts, the male with an open mouth with filed teeth, both with separate arms with outstretched fingers, 54cm and 45cm high, on stands. (8) £400-600

Provenance

Sotheby's, London, Important Tribal Art, 29th June 1987, lot 16.



293



294. A Zulu rhinoceros horn knobkerrie
South Africa

in two parts with a spherical finial and a tapering shaft, with a hide spacer, late 19th/early 20th century, 90.5cm long. £600-800



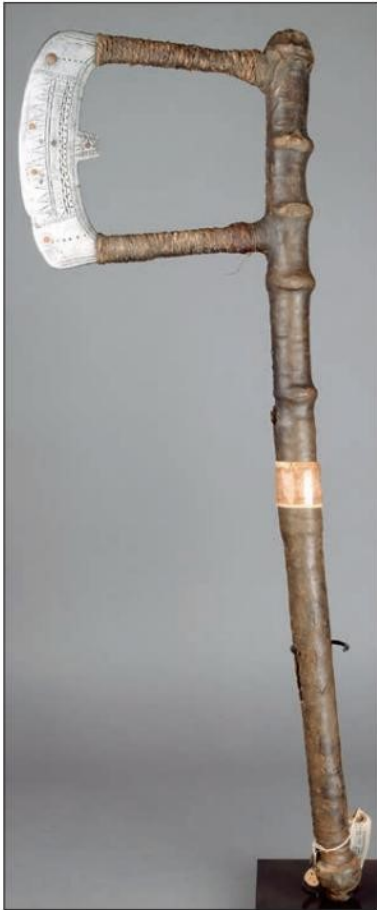
295. A Chokwe club
Angola

wood with an ovoid head with fine linear decoration, 47cm long. £150-200



296. An Ovimbundu staff
Angola

wood, with a carved head finial with an ovoid coiffure with geometric decoration and a raised back, with brass studs, 64.5cm long. £600-800



297



298

297. A Worji war axe
Bauchi Province, Nigeria
 with an open curved blade with incised decoration and inlaid copper circles with plaited hide binding, on a hide covered and part ribbed shaft, with museum number 56.24.698. and with Liverpool and Norwich Castle Museum labels, 66cm long. £300-400

Provenance
 Arthur Holdsworth Groom, District Officer, Nigeria 1905 - 1917
 Loaned to the Castle Museum, Norwich in 1911 and subsequently to the Liverpool Museum.

298. A Dogon Kanaga mask
Mali
 the pointed front face with pierced eyes and horns, the pierced vertical crest with applied geometric arms pointing to the earth and sky, with traces of pigment, the back with fibre webbing, 109cm high. £200-300

Provenance
 Christie's, London.
 The Michael & Marlene Pennie collection.



299



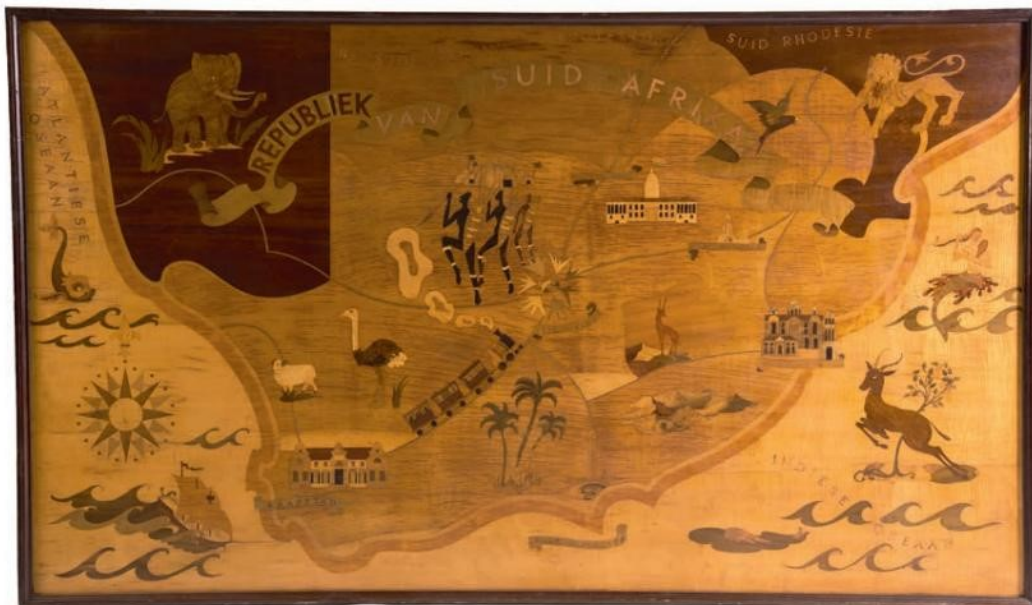
300

299. Two Kukuruku staffs
Kabba Province, Nigeria
 wood, with domed finials on carved open supports and part ribbed, with carved decoration, with metal spike tips, with Norwich Castle Museum labels, 155cm and 156cm long. (2) £400-600

Provenance
 Arthur Holdsworth Groom, District Officer, Nigeria 1905 - 1917
 Loaned to the Castle Museum, Norwich in 1911 and subsequently to the Liverpool Museum.

300. A Bobo Nyanga mask
Burkina Faso
 wood of antelope form with curled horns and medial crest, pointed ears, scarifications and long muzzle, with black and red pigment, 67cm high, on a stand. (2) £150-250

301. A large marquetry map of South Africa
various woods, with a banner title REPUBLIEK VAN SUID - AFRIKA, with animals, figures, cities with buildings and a steam train, 142 x 246cm. £1,500-2,000



301

302. A Yoruba staff
Nigeria
iron with a chameleon finial and circular platform with four conical supports, 101cm high, on a stand, a Dogon iron staff, Mali, with a seated figure with bells, 90.5cm high, on a stand, and a East African iron staff with a bronze head finial, 117.5cm high, on a stand. (6) £100-200



302

303. A Tuareg bela post
Niger/Mali
wood of deep Y shape, the post base with a reeded top, 121cm high, on a stand. (2) £300-400

Used in pairs by the Tuareg people to store rolled objects.

*Provenance
Dogon Gallery, Berlin, 2000.*



303



304

304. A Dogon ladder
Mali
wood, 106.5cm high, mounted on a stand.

£200-300



305



306

305. A Bambara mask

Mali

wood with black patina, with a nodule cresting and an open mouth, the inventory number A.1993.6.15 and chalked 125, 43cm high, on a stand, and a Dogon wood mask. (3) *£150-250*

306. An Igbo helmet mask

Nigeria

wood with black, white and ochre pigment finish with applied fabric, 40.5cm high. *£200-300*

307. A Makonde helmet mask

Mozambique

wood with raised scarifications and the top with a shaped panel of applied hair, with an encrusted red pigment patina, 26.5cm high. *£300-400*



307



308

308. A Baule Guro mask

Ivory Coast

wood, with spherical lobed coiffure and relief facial scarifications, 33.5cm high, and a Punu mask. (2) *£100-200*

309. A pair of Yoruba gelede masks

Nigeria

wood with a ribbed coiffure with a central crown and with facial scarifications, 21.5cm high. (2) *£300-400*

310. A Vili power object

D.R.Congo

with a spherical basket-work bowl with a encased monkey skull with applied shell to the forehead, 24cm high. *£150-250*



309



310

311. An Ethiopian processional cross
white metal and of typical form,
60cm high.

£200-300



311



312. A Shona headrest
Zimbabwe

wood with two geometric carved supports flanking a central post on
a facet edged shaped base,
12.8cm high.

£800-1,200



313. A Zulu headrest
South Africa

wood with carved lozenge and
toned decoration,
13.5cm high.

£150-250

**314. A Mfunte iron currency
blade**
Nigeria

of waisted form,
64cm high, on a stand. (2)

£50-100

Provenance
Ian Auld, London.

315. A Swazi headrest
South Africa

wood, raised on ribbed
tapering end supports with
moulded crescents to the top,
the underside with a circular
lug,
45.5cm long.

£100-200



313



315



316

316. A Sotho snuff container
South Africa
wood and brass wirework, with deep geometric linear carving and integral pierced handle, 23.5cm long. £300-500

317. A Shona knife
Zimbabwe
wood, iron and brass wirework, the handle and scabbard with geometric carving, 43cm long, a South African spear tip and a hardwood knife with a boar terminal. (4) £150-250

318. A Boni staff
Somalia
wood with a curved blade and carved geometric decoration, 52cm long. £50-100



317



318



319. A Zulu knobkerrie
South Africa
wood with an off centre spherical head with a flat top and shallow concave underside, 69cm long. £150-250



320. A Zulu knobkerrie
South Africa
wood with bands of two colour wire, 66cm long. £100-200



321. Three Dinka throwing clubs
Sudan
wood with tapering ends, one with an ovoid head, 68.5cm, 95cm and 103.5cm long. (3) £200-300



322. Two Maasai clubs
Kenya
wood with off centred spherical heads, 49.5cm and 51.5cm long. (2) £100-200



323

323. A Tshogo/Fang oliphant

Gabon

ivory with Janus headed finial with a faceted body, one facet with incised zig-zags, with a lozenge shape mouthpiece, carved zig-zag bands and a shallow ribbed end, late 19th/early 20th century, 53cm long.

£1,500-2,000

324. A Baule fly whisk

Ivory coast

with a wooden handle relief carved two masks and two animals, with a pierced central section and leather tasseled whisk, 53cm long.

£100-200

Provenance

Ian Auld, London.

Collected in Africa in the 1940s.

325. A Yoruba Shango staff

Nigeria

wood with a kneeling female figure with an integral necklace and remains of Reckitt's Blue, with a thunder axe and cockerel surmount, 40.5cm high, on a stand. (2)

£150-200

326. A Lobi standing female figure

Burkina Faso

wood with a vessel on her head, *foot loss through degradation*, 54.5cm high, on a stand,

a Lobi standing figure with outstretched arms and a pointed head, 41.5 cm high, on a stand and a third Lobi standing figure with a cap like coiffure, 35cm high, on a stand. (3)

£150-250

327. A Yoruba standing female offering figure

Nigeria

wood with a ribbed coiffure, pierced ears and face scarifications, holding a bowl and on a circular base with cloth, 33cm high.

£100-200

Provenance

Freddy Joy, London.

328. A Mossi biiga doll

Burkina Faso

wood with incised linear decoration, 13.5cm high.

£40-60

329. An Igbo standing female figure

Nigeria

wood with a high crested coiffure, facial and body scarifications, 37.5cm high, on a stand,

and a Mumuye pole figure, Nigeria, with a crested coiffure applied gum and hair, and with pigment decoration to the abdomen, 43.5cm high, on a stand. (4)

£100-200

Provenance

Igbo figure - Ian Auld, London.



324



325



326



327



328



329



330



331

**330. A Baule male figure *blolo bian*
Ivory Coast**

wood with an ornate coiffure and beard, with facial scarifications, with hands placed on the abdomen, on a rectangular ribbed base, 30cm high.

£300-500

331. A Madagascan maternity figure

wood with brown and black pigment finish, standing with a parted and disc coiffure, with inlaid bone eyes and teeth, with a suckling infant and with a bag on her back, the back of the base inscribed *Collect J.Y.C.044*, 68cm high.

£1,500-2,000

Provenance

Jean-Yves Coue, Nantes.



**332. A Surinam Maroon stool
South America**

wood with a curved elliptical seat with geometric carved decoration, on sleigh supports, 50.5cm long.

£150-250



**333. A Ngbaka throwing knife
Democratic Republic of Congo**
metal with incised decoration to one side and with a fibre and leather grip, 41.5cm high.

£200-300



**334. A Zulu waistband
South Africa**

beadwork and fabric, 84cm long, a Rotse basket with cover and a South African relief carved and pokerwork staff with a snake, antelope and lizard. (4)

£200-300

THE DAVID MORRIS COLLECTION

335. A Lobi male figure

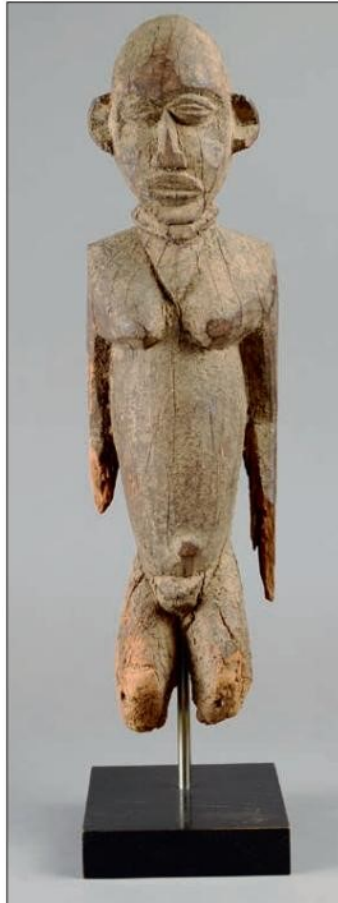
Burkina Faso

wood, with an encrusted patina, wearing a triangular neckpiece, 43cm high, on a stand. (2) £300-500

Provenance

The David Morris Collection.

Christie's, South Kensington, mid 1980s.



335



336

336. A Dogon female figure

Mali

wood, with incised geometric decoration and with an encrusted patina, 36.5cm high, on a stand. (2) £300-500

Provenance

The David Morris Collection.

Galerie Noir d'Ivoire, Paris, November 1993.

337. Four Tellem headrests

Mali

wood; one with a handle and two with end lugs, 26cm the longest. (4) £300-500

Provenance

The David Morris Collection.

Handle - Ex Haan; Italiander, Amsterdam, 1990.

Other three - Sotheby's, June 1995, Lot 747.



337



338



339



340



341



342



343

**338. A Bambara mule marionette
Mali**

wood, with incised linear decoration and pierced ears,
31.5cm long, on a stand. (2) £200-300

Provenance

The David Morris Collection.

Galerie Noir d'Ivoire, Paris, November 1992.

**339. A Dan passport mask
Ivory Coast**

wood,
18cm high, on a stand. (2) £100-150

Provenance

The David Morris Collection.

**340. A Dan mask
Ivory Coast**

wood, with nails, the forehead with a vertical ridge,
23cm high, on a stand. (2) £200-300

Provenance

The David Morris Collection.

Jean-Michel Huguenin, Paris, September 1991.

**341. A Mende bundu helmet mask
Sierra Leone**

wood, with a lidded pot surmounting the ribbed coiffure with braided tassels, the face with scarifications and with a ringed neck,
42.5cm high. £300-400

Provenance

The David Morris Collection.

Purchased in 1985.

**342. A Senufo kpelie mask
Ivory Coast**

wood, previously with a bird crest,
25cm high, on a stand. (2) £150-200

Provenance

The David Morris Collection.

Jean-Michel Huguenin, Paris, July 2002.

**343. A Ibibio mask
Nigeria**

wood, with a black patina and white highlights, lower jaw missing,
21.5cm high. £150-200

Provenance

The David Morris Collection.

Ian Auld, London, December 1988.



344. Five Lobi figures
Burkina Faso

wood, including a seated pair,
12.5cm and higher, on three stands. (8)

£200-300

Provenance

The David Morris Collection.

Pair - Bonhams, London, 4th July 1991, Lot 336.

Feet losses - L'Accrosonge, Paris, April 1989.

Encrusted - Bonhams, London, 4th July 1991, part Lot 58.

Worn nose - Jean-Pierre Laprugne, Paris, September 1991.



345. Three Dogon door locks
Mali

wood, including one with two seated figures,
another with horn finials and the third with a
shaped top,
27cm the highest. (7)

£200-300

Provenance

The David Morris Collection.

Seated figure - Harding, London, July 1988.

Horns - Jean-Pierre Laprugne, Paris, March 1995.



346. Four miniature figures
Ivory Coast and Burkina Faso

wood; including a Senufo standing
male figure, on a stand, a Senufo
female figure, on a stand, a Lobi female
figure, on a stand and a Lobi figure
with an encrusted patina,
15.2cm the highest. (7)

£200-300

Provenance

The David Morris Collection.

Senufo male figure - Christie's, South Kensington, 2nd December 1986, Lot 194.

Senufo female figure - Robichez, Paris, October 1999.

Lobi encrusted figure - Christie's South Kensington, 24th May 1988, part Lot 82.



347. Five Dogon / Bambara door locks
Mali

wood; including a Dogon female figure
with allover linear decoration, the locking
bar missing; a Bambara figural type with
legs and a stylised head; a Bambara type
with a crested head finial, on a stand; a
Bambara type with a horned mask and
linear decoration, on a stand; a Bambara
type with a stylised head,
on a stand,
46cm the highest. (12)

£250-350

Provenance

The David Morris Collection.

Dogon - Bonhams, May 1993.

Bambara (legs) - Jean-Pierre Laprugne, Paris, April 1992.

Bambara (crested) - Robichez, Paris, August 1992.

Bambara (horns) - Jean-Pierre Laprugne, Paris, September 1994.



348. Five figures with encrusted patinas
Ivory Coast and Ghana

wood, including a pair of Baule
personal shrine male and female
figures, an Ashanti female figure with
loin cloth, a Lobi figure and a Ewe
figure with a fabric skirt and beads,
19.5cm the highest, all on stands. (9)

£250-350

Provenance

The David Morris Collection.

Baule figures - Jean-Michel Huguenin, Paris, 1990.

Ashanti female figure - Marc L Felix, Tribal Arts, Brussels, May 1997.



349. Three Dogon door locks
Mali

wood, all with stylised heads, one with eyes and
two with incised linear decoration,
28.5cm the highest, two fixed on stands. (4)

£200-300

Provenance

The David Morris Collection.

Squared head - Galerie Noir d'Ivoire, Paris, June 1995.

Head with eyes - Lefevre, Brussels, October 1996.

Triangle top - Robichez, Paris, December 1996.



350

350. A Yoruba divination bowl
Nigeria

wood, with a cockerel support with incised wings and tail feathers, with white, red and black finish, 18.5cm high. £300-500

Provenance

The David Morris Collection.

Christie's, London, 24th June 1985, Lot 106.

351. Four Dogon figures

Mali

wood, including a pair, male and female, a standing male and a knife handle, 15cm the highest, all on stands. (6) £150-250

Provenance

The David Morris Collection.

Dogon male figure - Jean-Pierre Laprugne, Paris, November 1990.

Dogon knife handle - Lefevre, Brussels, 2004.



351



352

352. Four Lobi standing figures

Burkina Faso

wood, 28cm the highest, three on stands. (7) £200-300

Provenance

The David Morris Collection.

Missing foot - Ian Auld, London, April 1987.

Legs eroded - Bonhams, London, 4th July 1991, Lot 334.

Without stand - Bonhams, 4th July 1991, part Lot 58.



353



354

353. A Bambara mule marionette

Mali

wood, with incised linear decoration, nail eyes and pierced ears, 35.5cm long, on a stand. (2) £150-250

Provenance

The David Morris Collection.

Reginald Groux, Noir d'Ivoire, Paris, May 1993.

354. A Kuba anthropomorphic pipe bowl

Democratic Republic of Congo

wood, leather and metal studs, 11cm high, on a stand. (2) £150-200

Provenance

The David Morris Collection.

Ian Auld, London, May 1991.

355. A Byanzi figural gourd stopper**Democratic Republic of Congo**

wood, with a crested and diced coiffure and skirt,
13.5cm high, on a stand,
a Teke fetish, with bound skeletal matter, on stand and a Lobi
figure, on a stand. (6) £200-300

Provenance

The David Morris Collection.

Byanzi stopper - Ian Auld, 1985.

*Teke fetish - Old Belgian Collection, Galerie Noir d'Ivoire,
Paris, 1993.*



355



356

356. A Bobo/Bwa staff**Burkina Faso**

wood with a standing female figure with linear decoration,
with cowrie shells and a spike base,
61.5cm high, on a stand,
a Wurkun columnar figure, on a stand and a Yanzi/Teke fetish
figure. (5) £200-300

Provenance

The David Morris Collection.

Bobo/Bwa staff - Jean-Pierre Laprunge, Paris, March 1992.

Wurkun figure - Christie's, South Kensington, mid 1980s

Yanzi/Teke - Peter Sloane, London, 1989.

357. A Dogon male figure**Mali**

wood, with a circular surmount,
18.5cm high,
a Dogon female figure and a Yaka doll, all on stands. (6) £150-250

Provenance

The David Morris Tribal Art Collection.

Dogon male figure - Galerie Noir d'Ivoire, Paris, March 1993.

Yaka doll - Jean-Pierre Laprunge, Paris, April 1994.



357



358

358. A Dogon miniature spirit ladder**Sanga Village, Mali**

wood,
65cm high, on a stand,
and five similar posts and a ladder, on stands. (12) £300-400

Provenance

The David Morris Collection.

Spirit ladder - Robichez, Paris, March 1993.

359. A Yoruba kneeling maternity figure**Nigeria**

wood, with various items in her head band and with a child,
22.5cm high,
a Bambara Marka dance crest, with aluminium mounts and a
Yoruba doll. (3) £150-250

Provenance

The David Morris Collection.

Yoruba maternity figure - Ian Auld, London, March 1997.

Yoruba doll - Ian Auld, London, 1985 / 86.

Bambara crest - Sotheby's, London, c.1985.



359



360

360. A Mossi container and cover**Burkina Faso**

wood, on three angled supports above incised linear
decoration, with a block and head finial,
46cm high, on a stand. (3) £100-150

Provenance

The David Morris Collection.

Jean-Michel Huguenin, Paris, November 1993.



361

**361. A Dan Mano passport mask
Ivory Coast**

wood, with an encrusted patina, with horns and a long curved beak, 25cm high, on a stand. (2) £400-600

Provenance
The David Morris Collection.
Californian private collection.
Alain de Monbrison, Paris
Patrick Morgan, Paris, September 2005.

**362. A Ibo mask
Nigeria**

wood, with a black patina, with scroll horns and a long beak, the forehead with an inserted nail, 37.5cm high. £200-300

Provenance
The David Morris Collection.
Christie's, 3rd December 1991, Lot 82.



362



**363. A Dinka headrest
Sudan/Ethiopia**

wood, with aluminium studs and with incised linear decoration to the top, a metal side handle and a tied root burr, 17cm high. £150-250

Provenance
The David Morris Collection.
Christie's, South Kensington,
31st March 1987, Lot 210.



**364. A Zulu headrest
South Africa**

wood, with twin supports and carved zig-zag decoration, the underside inscribed FROM MARITZBURG, SA., 28cm long. £150-200

Provenance
The David Morris Collection.



**365. A Turkana headrest
Kenya**

wood and hide, with aluminium staples, 25cm high. £100-150

Provenance
The David Morris Collection.
Christie's, South Kensington, 1st December 1987, Lot 116.



366

**366. A Fang gunpowder flask
Gabon**

wood, sheet brass, reptile skin and brass studs, of ovoid form with remains of linear decoration and with a wide circular cover, 18.5cm long, and a Jarawa headboard, with incised decoration, used for balancing and carrying objects on the head, 47cm long. (3) £100-150

Provenance
The David Morris Collection.
Flask - Jean-Michel Huguenin, Paris, March 2000.
Headboard - Ian Auld, London, March 1988.

367. Two Dogon fragmentary figures**Mali**

wood, including one with stretched arms, the other with a lip plug, 20cm and 17cm high, on stands. (4) £200-300

Provenance

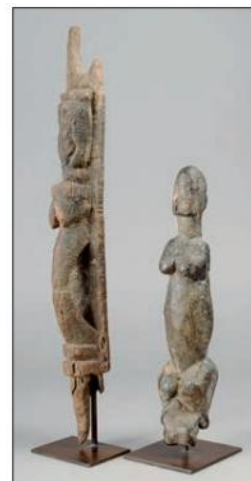
The David Morris Collection.

Stretched arms - Jean-Michel Huguenin, Paris, March 1992.

Lip plug - Ian Auld, London, 1986.



367



368

368. Two Dogon / Tellem figures**Mali**

wood, with blackened patinas, including a possible fragmentary equestrian figure and an ancestor figure with a board back with inscribed collection number 87L145, 26cm and 41cm high, on stands. (4) £200-300

Provenance

The David Morris Collection.

Jean-Michel Huguenin, Paris, 1990 and 1991.

369. A Ewe power figure**Togo**

wood, with tied fabric around the lower legs and with an encrusted patina, 31cm high, on a stand. (2) £100-150

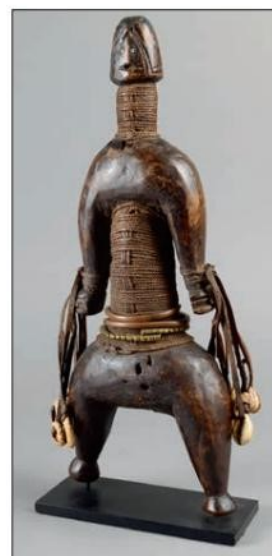
Provenance

The David Morris Collection.

Jean-Michel Huguenin, Paris, April 1989.



369



370

370. A Namji doll**Cameroon**

wood, fibre, brass, copper, leather and shells, 36cm high, on a stand. £300-400

Provenance

The David Morris Collection.

Rabier, Brussels, July 1992.

371. A Kuba spice mortar**Democratic Republic of Congo**

wood, with a carved geometric band, 7.8cm high, a Yoruba Janus Shango staff and a small Kamba stool. (3) £150-200

Provenance

The David Morris Collection.

Kuba mortar - Jo De Buck, Brussels, November 2005.

Yoruba staff - Ian Auld, London, February 1989.

Kamba stool - Phillips, London, 1989.



371

**372. Two Oromo headrests****Ethiopia**

wood, one with carved decoration, 18.5cm high, and an Oromo block headrest. (3) £120-180

Provenance

The David Morris Collection.

**373. Four East African mbiras**

wood and metal; one with beads, another decorated with circles and dots and inscribed various names, the smallest on a stand, 30cm long. (5) £100-200

Provenance

The David Morris Collection.

Beads - Ian Auld, London, May 1992.



374



375

**374. Three Mossi dolls
Burkina Faso**

wood, the largest with incised decoration and leather covered, 24cm high, all on stands. (6) £150-250

Provenance

The David Morris Collection.

Largest - Rene & Maud Garcia, Paris, 1994.

Eroded head - Ile Deuron, Paris, September 1992.

Smallest - L'Accrosonge, Paris, 1987.

**375. Two Zigna fetish figures
Tanzania**

wood, with encrusted bound cloth, the female with bead eyes and charge recess to the top of the head, 20.5cm and 16.5cm, the smaller on a stand. (3) £200-300

Provenance

The David Morris Collection.

Female - Galerie Duperrier, Paris, March 1992.

L'Accrosonge, Paris, 1994.



376



377

**376. A Yoruba Eshu staff
Nigeria**

wood, the kneeling female figure with her hands on her breasts, 20.5cm high, on a stand, and a larger Yoruba Eshu staff, the figure holding two gourds, on a stand. (4) £150-200

Provenance

The David Morris Collection.

Both - Ian Auld, London.

**377. An Ibibio articulated colon figure
Nigeria**

wood, with stained highlights, one arm missing, 51cm high, on a stand. (2) £100-150

Provenance

The David Morris Collection.

Christie's, South Kensington, 1985.

**378. A Yoruba kneeling female offering figure
Nigeria**

beadwork and cloth, 27.5cm high. £150-250

Provenance

The David Morris Collection.

Ian Auld, London, January 1994.



378



379

**379. Four Yoruba Ibeji figures
Nigeria**

wood, including a female with carved zig-zags on her breasts and wearing beads, another with a washed face and with glass and coconut beads and brass bangles, another female and a male wearing a cloth gown, 24.5cm the highest. (4) £400-600

Provenance

The David Morris Collection.

Female with beads - Christie's, London, 1986

Worn face - Tunbridge Wells, 1993

Other two - Ian Auld, 1985 / 86.

380. A Sepik River Janus staff finial
Papua New Guinea

wood, with encrusted patina,
 19.6cm high, mounted. (2)

£100-150

Provenance

The David Morris Collection.

Peter Sloane, London, December 1987.



381

381. A Massim lime spatula
Trobriand Islands, Melanesia

wood, with carved scroll and pierced decoration, with a 'clapper' finial,
 50cm long.

£150-250

Provenance

The David Morris Collection.

Ian Auld, London, 1986.

382. An latmul lime spatula
Middle Sepik River, Papua New Guinea

wood, carved a bird supporting a bowl, on a tapering shaft,
 35cm long, on a stand. (2)

£150-250

Provenance

The David Morris Collection.

Bonhams, London, 4th July 1989, lot 10.



380



382

THE PENDARELL (PEN) KENT COLLECTION

An illustrious banking career culminating as a director of the Bank of England. Pen's business trips to America and the Continent, gave him the opportunity to visit the great museums and sparked an interest in Tribal Art and the subsequent meeting of dealers and auctions started a lifelong passion and a fascinating collection. After acquiring a piece, many hours of reading and researching with meticulous notes of similar examples and the thoughts of the learned were made and all displayed in the family home in East Sheen.



383. A Guere mask
Ivory Coast

wood with an overhanging forehead and remains of fabric, with slitted bulbous eyes and a wide nose with reddish/brown pigment, the open mouth with internal ridges, the sides and chin with remains of attachment pegs, 24cm high.

£200-300

Provenance
Juergens Inc., New York.
Pendarell (Pen) Kent collection.



384. A Bete mask
Ivory Coast

wood with three flanges and two pair of eyes, the nose connecting to the lower flange, the mouth with notches to the top lip with red and white pigment and with linear grooves to the chin, with applied metal discs, 28cm high.

£400-600

Provenance
Christie's, London, 6th December 1995, Lot 71.
Pendarell (Pen) Kent collection.



385

385. A Ogoni small mask
Nigeria

wood with a central parted coiffure, narrow eyes and scarifications in front of the ears, lower jaw missing, 13.5cm high. £100-200

Provenance
Juergens Inc., New York, 1978.
Pendarell (Pen) Kent collection.



386

386. An Ibibio mask
Nigeria

wood with a pair of horns and two nails to the top of the head and keloids next to the ears, with an articulated jaw and painted filed teeth, thick black patina with eggshell, 31cm high. £300-400

Provenance
Christie's, London, 6th December 1995, Lot 72.
Pendarell (Pen) Kent collection.



387

387. A Dan Kran mask
Liberia

wood with over-hanging forehead and a metal nail to the top, high rounded cheeks and conical eyes, the top lip with holes, some retaining wood pegs, the back with the remains of a cloth strap, late 19th/early 20th century, 25cm high, on a stand. (2) £500-800

Provenance
Ex Collection Paul & Maria Wyss.
Galerie T moin, Geneva, Switzerland.
Pendarell (Pen) Kent collection.

Published
Die Kunst de Dan. Musee Rietberg, Zurich, 1976, p.112, no.82.



388

388. A Songye kifwebe mask
Democratic Republic of Congo

wood with wide concentric bands with red, black and white pigment, with remains of fibre binding, 42cm high, on a stand. (2) £400-500

Provenance
Pendarell (Pen) Kent collection.



389. A Baule gong beater
Ivory Coast

wood with differing incised geometric designs and with holes for cloth, the tapering shaft with a relief carved leopard's head, with a pierced attached loop, 24.5cm long. £100-200

Provenance
Galerie Mazarine, Paris.
Pendarell (Pen) Kent collection.



390



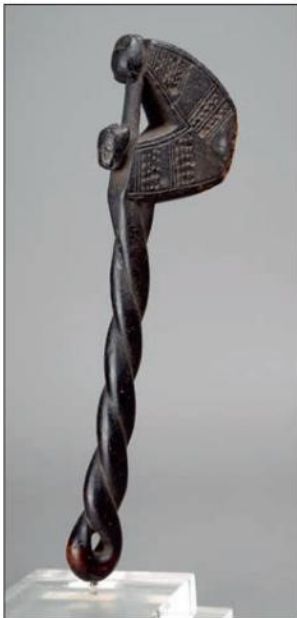
391



392



393



394



395

**390. A Yoruba female Ibeji
Nigeria**

wood with a pointed coiffure and worn face, wearing a tirah and a low belt, with remains of camwood powder, 26cm high, and a Yoruba male Ibeji, with a cowrie shell necklace, 26.5cm high. (2) £100-200

Provenance

*The first - Juergens Inc., New York.
Pendarell (Pen) Kent collection.*

**391. A Yoruba female Ibeji
Nigeria**

wood with a crested coiffure with remains of Reckitt's Blue, with almond shape eyes and lashes and wearing coconut disc and glass beads, 24cm high. £150-250

Provenance

*Volta Place Gallery, Washington DC.
Pendarell (Pen) Kent collection.*

**392. A Senufo heddle pulley
Ivory Coast**

wood with a bird head finial and with linear and diaper incised decoration, 17cm high, on a stand. (2) £100-200

Provenance

*Sotheby's, London, 29th January 1973, lot 60.
Pendarell (Pen) Kent collection.*

**393. An Akan doll
Ghana**

wood, the carved torso and head with a triple ringed neck, 14.5cm high, on a stand, a Bamba chameleon with thick encrusted patina, 12.5cm long and a Dan passport mask, 8.5cm high. (4) £150-250

Provenance

*The doll - Ian Auld, London.
The chameleon - Ex Joseph Herman
Monika Wengraf, London.
The mask - Hemmingway, New York.
Pendarell (Pen) Kent collection.*

**394. A Baule gong beater
Ivory Coast**

wood with differing incised geometric decoration to either side of the top and with remains of cloth, the back edge with two relief leopard's heads, with an entwined handle, 25cm long. £100-200

Provenance

*Antwerp Gallery, Belgium.
Pendarell (Pen) Kent collection.*

**395. A Dogon fragmentary figure
Mali**

wood with encrusted patina, standing with raised arms, 17cm high on a stand, and a Dogon standing figure with encrusted patina, 13.6cm high. (3) £150-250

Provenance

*The smaller figure - ex Herbert F. Rieser, Christie's, London,
13th May 1980, Lot 66.
Pendarell (Pen) Kent collection.*

396. A Mossi headdress**Burkina Faso**

wood, carved as an antelope with black and white pigment with a woven cap having braided tassels and cowrie shells,
55cm high.

£200-300

Provenance

Sotheby's, 4th December 1973, Lot 288.

Pendarell (Pen) Kent collection.



396



397

397. A Lega mask**Democratic Republic of Congo**

wood with kaolin and a fibre beard,
35cm high.

£400-600

Provenance

Segy Gallery, New York.

Pendarell (Pen) Kent collection.

398. An Ibibio mask**Nigeria**

wood with a cylinder crest and vertical scarification, applied side 'horns' and with an articulated jaw, with white, black and red pigment,
27cm high.

£200-300

Provenance

Juergens Inc., New York.

Pendarell (Pen) Kent collection.



398



399

399. A Chokwe mask**Democratic Republic of Congo**

wood with a tripartite lobed and diced coiffure with two front discs, the face with scarifications and with slits to the eyes, pierced ears and filed teeth, with pigment,
22.5cm high.

£400-500

Provenance

Christie's, 26th June 1995, Lot 133.

Pendarell (Pen) Kent collection.

In a copy of a signed description by Frère Joseph Cornet it states this mask is from Shambuanda, West Kasai and that the coiffure is based on that of Lunda chiefs.

400. A Senufo standing female figure**Ivory Coast**

wood with an encrusted patina, with a crested coiffure and squared back shoulders and with her hands on her hips, the feet with painted and labelled 16,
39cm high.

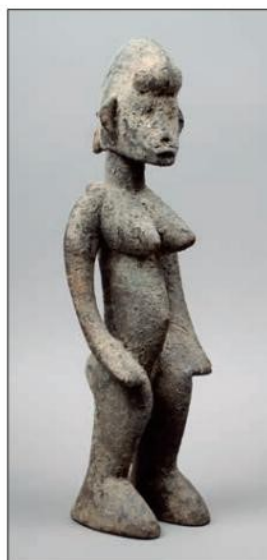
£600-800

Provenance

Christie's, London, African Art from the collection of Josef Mueller, 13th June 1978, lot 24.

Christie's, London, 27th March 1990, lot 155.

Pendarell (Pen) Kent collection.



400



401

401. A Dan Gagon mask**Ivory Coast**

wood with slit eyes, vertical linear markings to the sides and a long beak-like nose with an applied lower jaw and fur,
30cm high.

£300-500

Provenance

Juergens Inc., New York, 1982.

Pendarell (Pen) Kent collection.



402



403

**402. A Yoruba Edan staff
Nigeria**

bronze, the seated male figure with a suspension loop, smoking a pipe, with an iron spike, 21cm high. £200-300

Provenance
Monika Wengraf, London.
Pendarell (Pen) Kent collection.

**403. A Dogon head scratcher
Mali**

bronze with a seated male and female couple on a stool, with a tapering shaft, 23cm long. £100-150

Provenance
Pendarell (Pen) Kent collection.

**404. A Teke standing male figure
Democratic Republic of Congo**

wood with an encrusted patina, with a crescent crest and facial scarifications, with his hands gripping his beard, 24cm high. £100-200

Provenance
Juergens Inc., New York.
Pendarell (Pen) Kent collection.



404



405

**405. A Lobi flute
Burkina Faso**

wood of tapering form with a twin 'horn' finial and a flattened knob with incised linear decoration above, 54.5cm long on a stand. £150-200

Provenance
Collected by M de Combes.
Pendarell (Pen) Kent collection.

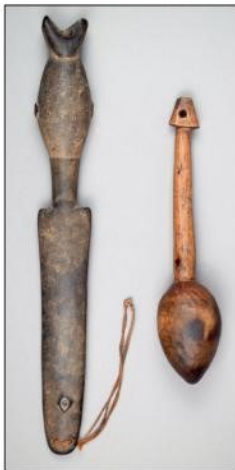
**406. A Grebo standing female figure
Liberia**

wood with a twin horned coiffure and inlaid cowrie shells to the forehead and eyes, with a bead necklace and holding a bag in each hand, painted inventory number 70-7-7, lost through mounting hole, 55cm high. £100-150

Provenance
Museum of African Art, Washington DC, 1977.
Pendarell (Pen) Kent collection.



406



407

**407. A Lobi/Mossi anthropomorphic
flute**

wood with an encrusted patina, 40.5cm long and a wooden ovoid head club, 26.5cm long. (2) £100-200

Provenance
Pendarell (Pen) Kent collection.

**408. Four Koma figures
Ghana**

terracotta including a seated figure with a depression to the top of the head and wearing a necklace with badge and multiple armbands, 20cm high, a seated Janus figure, 27cm high, a stylised Janus figure with the head looking upwards, 20cm high and a Janus head, 15.5cm high. (4) £200-300

Provenance
The first three - L'Accrosongue, Paris.
The fourth - Volta Place Gallery, Washington DC.
Pendarell (Pen) Kent collection.

409. A Nigerian fragmentary head

terracotta with a front crested coiffure with a stippled back, 16cm high, on a stand, an anthropomorphic vessel, modelled as a mother with a child as the handle, 18cm high, on a stand and a Mali weight/smoother, with five snakes to the body, 11.5cm high. (5) £150-250

Provenance
The first two - Ex Josef Herman collection.
Monika Wengraf, London.
Pendarell (Pen) Kent collection.



408



409

410. A Chokwe chair**Angola**

wood and hide, carved with figures in daily and ritual pursuits, birds, bats, monkeys and a snake, the back panel with a seated chief figure, 101.5cm high. £1,000-1,500

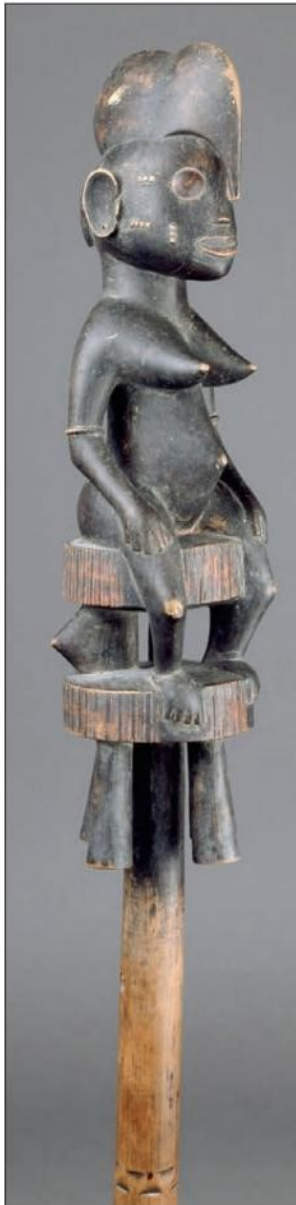
Provenance

Mike Holt, 1971.

Pendarell (Pen) Kent collection.



410



411

411. A Senufo champion cultivator staff *tefalipitya*
Ivory Coast

wood with a seated female figure with a characteristic crested coiffure and pierced ears, with her hands placed on her thighs, her back with chequer scarifications and horizontal lines, sitting on two stools with linear edges with alternate banding, the shaft with incised bands and with a metal tip, 142cm high, on a stand. (2) £500-800

Provenance

Michel Koenig, Brussels.

Pendarell (Pen) Kent collection.



412

412. A Hembra fly whisk
Democratic Republic of Congo

wood, fibre, feather, hair and a seed, with a female half figure finial, the handle with feathers and parchment/paper parcel bound to one side, 56.5cm long.

£200-300

Provenance

Pendarell (Pen) Kent collection.

413. A Mossi mask
Burkina Faso

wood with a pair of tall 'horns' and a domed forehead with an applied bird head, decorated with red, white and black encrusted patina and with applied seeds, 151cm high, on a stand. (2)

£300-500

Provenance

Pendarell (Pen) Kent collection.

414. A Baule staff
Ivory Coast

wood with relief masks, flattened knobs and incised linear decoration, 84cm long.

£150-250

Provenance

Juergens Inc., New York.

Pendarell (Pen) Kent collection.



413

415. Two Punu masks
Gabon

wood with white pigment and black highlights, with attachments, *one cut*, 18cm high, the mask. (2)

£100-150

Provenance

Pendarell (Pen) Kent collection.



414



415



417

416. Three Colima standing figures
Mexico

terracotta, all with their arms folded, 12.2cm the highest, mounted on a board. (4)

£100-150

Provenance

Neikrug Gallery, Inc., New York.

Pendarell (Pen) Kent collection.

417. A Djenne head
Mali

terracotta with pronounced eyes and lips and keloids in front of the ears, 8cm high, on a stand. (2)

£100-200

Provenance

L'Accrosonge, Paris.

Pendarell (Pen) Kent collection.

418. A Batak lime container
Indonesia

bone and wood, with engraved triangles and birds with a head stopper, 12cm high,

a bamboo lime container with stopper, 20cm high and a Borneo figure with child and an animal, 7.6cm high. (5)

£100-150

Provenance

Pendarell (Pen) Kent collection.



416



418

A PRIVATE COLLECTION



419

419. A Luba axe
Democratic Republic of Congo

wood and iron, carved a head with a seven knot coiffure and sheet metal and pin eyes, with a flared blade with incised decoration, with a cylindrical handle, 48.5cm long. £500-700

420. A Guro heddle pulley
Ivory Coast

wood, with a bovine mask and handle, the frame with incised zig-zag decoration, 19cm high, on a stand. (2) £200-300



420



421

421. A Guro mask
Ivory Coast

wood, with a horned cresting, 28cm high, with a stand. (2) £100-200

422. A Mongo headrest
Democratic Republic of Congo

wood, with fine linear decoration, having a crescent shape top and a single column support with brass wire binding and a faceted square base, 15.5cm high. £400-600

For a similar type see Anitra Nettleton, African Dream Machines, 2007, p.175, pl.149.



422

423. Three Tellem headrests
Mali

wood, with single column supports, one with a handle and two with incised linear decoration to the top ends, 17cm the highest. (3) £200-300



423



424



426

424. A Bambara chi wara antelope headdress
Mali

wood, with a black finish and applied metal and fabric, 73cm high, on a stand. (2)

£300-500

425. Two Yoruba female Ibeji
Nigeria

wood, with Reckitt's Blue, the larger carved with Islamic triangle amulets to the chest and back and with a waistband and with applied metal rings, 31cm and 28.5cm high. (2)

£150-250

426. A Sepik River female ancestor figure
Papua New Guinea

wood, cowrie shell and fibre, standing with forearms and hands raised, 79cm high, on a stand. (2)

£300-500

427. A Sepik River ancestor figure
Papua New Guinea

wood, standing with a plumed headdress and with a hooked nose, with a red pigment finish, 32.5cm high.

£300-500



425



427



428

**428. A Yoruba large maternity figure
Nigeria**

wood, standing with a ribbed coiffure with remains of Reckitt's Blue and with long eye lashes, with an infant on her back wearing a triangular amulet, both with ribbed 'bead' waistbands,
85.5cm high.

£2,000-3,000

Provenance

Robert and Rena Lewin, owners of the Brook Street Gallery, London.

Sotheby's, London, 3rd December 2004, lot 70.



**429. A Shona headrest
Zimbabwe**

wood, with an incised rectangle to the platform with end lifts with differing carved decoration on a pierced and carved support and block base,
16.5cm high.

£150-250



**430. A Shona headrest
Zimbabwe**

wood, with incised triangles to the top and with ribbed ends on a pierced and carved support with a figure of eight base,
11cm high.

£400-600



431



432

OTHER PROPERTIES

431. A pair of Nepal temple struts

wood, carved and pierced, each with a central deity with foliage and a kneeling figure below, 97cm high, on stands. (4) £300-400

432. A Naga shield

Northern India

hide of rectangular form with a medial ridge and remains of painted circle decoration, with a woven rattan handle, 89cm high. £200-300

433. A pair of Timor seated male and female figures

Indonesia

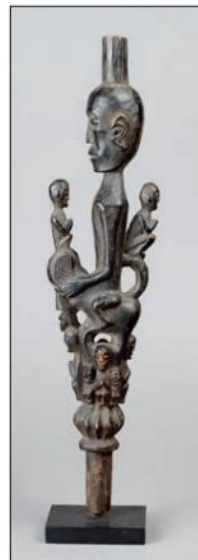
wood, 40cm high. (2) £200-300

Provenance

The Luciano Frederico Collection.



433



434

434. A Batak staff finial

Indonesia

wood with an ancestor figure riding a beast, surrounded by other figures, 30.5cm high on a stand. (2) £80-120

435. Eight chromolithographs from Internationales Archiv für Ethnographie

including North West Coast masks (Bd.III. TAF.III), a New Guinea headhunter (Bd.IV.TAF.XV), both mounted, Tonga clubs (Bd.I.TAF.VII), Maori feather box and cloak (Bd.I.TAF.VIII), New Ireland stone head axe (Bd.III.Taf.XV), New Caledonia masks (Bd.IX.TAF.X) and (Bd.IX.TAF.XI), Hawaii feather mask BD.X.TAF.XVI.), 25cm x 20cm each plate size, unframed. (8) £150-250

436. Plates from W. O. Oldman Catalogue of Ethnographical Specimens

seventy seven in multiples and some as postcards. (a lot) £100-200



435



436 part

437. A Kenyah shield

Borneo, Indonesia

wood, paint, hair and rattan, the front painted *Udoq* monster masks with large eyes and fangs with inset strands of hair, the reverse with a central rib and an integral handle and painted two ancestor figures and further masks, with a Charles Hose, Sarawak label and a Oldham disc tag, 115cm high.

£10,000-15,000

Provenance

Charles Hose (1863 - 1929)

William Ockelford Oldham (1879 - 1949)

Private collection, UK



Charles Hose joined the Sarawak civil service and was sent to the Baram River district which he governed as its most senior official from 1888. He progressed quickly through the ranks. He was instrumental in eradicating headhunting and brokered a peace agreement between various enemy tribes in Marudi in 1899.

In his pastime Hose liked to venture into the rainforest and he became an avid collector of plants and animals. In this he was supported by Raja Charles Brooke, founder of the Sarawak Museum. Hose discovered numerous new species and chartered the first map of the area. His exploitations led him to become intrigued by the natives of the Baram River who he studied and from whom he collected anthropological objects, some of which can be found at The British Museum, including eight similar shields, and the Museum of Archaeology and Anthropology in Cambridge.



438

438. An Indonesian paddle
wood with a curved and finned grip and a leaf shape blade, 137.5cm long. £150-200

439. A West Nepal guardian figure
wood, standing with looped arms and hands resting below the chest, 66cm high, on a stand. (2) £200-300



439

440. A pair of Javanese puppets
Indonesia
wood, paint and cloth, 47cm high. (2) £100-200



440

441. A Borneo mortar
Indonesia
wood, carved as a bird with a hinged cover revealing a shallow recess, 30.5cm long. £100-200



441

442. A Lombok bird cage
Indonesia
wood and bamboo, of demi lune shape with a carved mythical beast handle, 28.5cm high. £100-200



442

443. A Dayak baby carrier
Indonesia
wood with shell, beads, teeth and tusks, relief carved a central mask and mythical beasts, with a string of charms and rattan straps, 36.5cm high. £200-300



443

444. A Waskuk spirit mask

Papua New Guinea

wood with an attachment hole to the top and further holes on the right, 36.5cm high, on a stand. (2) £400-500

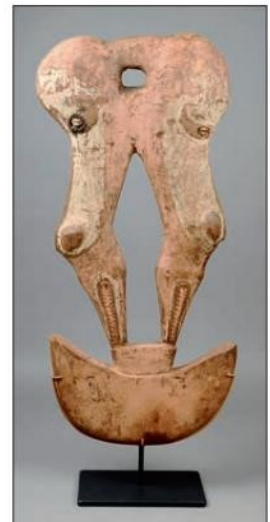


444

445. A Sepik River suspension hook

Papua New Guinea

wood with pigment and inset cowrie shell eyes, 66.5cm high, on a stand. (2) £400-600



445

446. A Papua New Guinea shield

Melanesia

wood with a carved face and scrolls with white, blue and red pigment, with a pierced hole either side and the back with an integral handle, 69cm high. £800-1,200



446

447. A Massim dance wand

Papua New Guinea

wood, with a central handle and two stylised carved and pierced paddles, one with a serpent cresting, 68.5cm long. £400-600



447

Provenance

Private collection Boston, USA.

448. A Lower Sepik River headrest

Papua New Guinea

wood, the carved top with ancestor head ends, the underside with scrolls and a pierced medial ridge, with bound bamboo legs, pigment decoration, 50.5cm long. £400-600

Provenance

Ex private collection, Bremen, Germany.

449. An Asmat apron

Papua New Guinea

fibre with a woven belt with three appendages and tasseled fringe, 44cm long. £100-200

Provenance

Collected in situ by Dr van Amelsvoort, circa 1960.



448



449



450. A Massim lime spatula
Papua New Guinea
 with a stylised seated figure terminal, 35cm high, with a stand. (2) £400-600

Provenance
Davidsons Auction House, Sydney, 2004.



451. A Geelvinck Bay Korwar amulet
New Guinea
 wood with shell beads, 13.6cm high, on a stand. (2) £300-400



452. Two Papua New Guinea fish hooks
Melanesia
 mother of pearl with fibre, and wood and bone with fibre
 9.1cm and 13.5cm long. (2) £200-300



453. A Massim tapa beater
Papua New Guinea
 wood with carved zig-zag bands to the base of the body and with masks to the butt of the handle, 29.5cm long. £150-200



454



455

454. A Lower Sepik river mask
Papua New Guinea
 wood, of elliptical form, with medial ridge and pointed nose, pigment decoration and with braided fibre border, 46.5cm high. £200-300

Provenance
Cyrille Vanheyst, Palm Beach, Sydney.
Cyrille Vanheyst made many trips to New Guinea between 1957 - 1970 in his capacity as a mine engineer advising on several major projects.

455. A Papua New Guinea adze
Melanesia
 with a basalt blade, reed bound to a wood handle, 44cm high. £200-300

456. A Mendi shield
Southern Highlands, Papua New Guinea
 wood with incised lines and with red and white pigment, with a woven fibre handle,
 122.5cm high. £500-800



456

457. A Massim club
Trobriand Islands, Papua New Guinea
 palmwood with a concave blade, incised scroll and zig-zag decoration and with a recessed panel rounded tip, the handle with a pierced stylized human or canoe form, 79.5cm long. £400-600



457

458. A Massim paddle
Trobriand Islands, Papua New Guinea
 wood with a leaf shape blade having a swollen tip decorated as an animal head, with relief scroll carving and piercing to the base, the shaft with a tapering terminal, 198cm long. £500-700



458

459. An Asmat large drum
Papua New Guinea
 wood of hour glass form with relief carved zig-zag decoration, the handle with stylised birds and with a reptile skin, 123.5cm high. £600-800



459



460



461

**460. A New Britain dance wand
Papua New Guinea**

wood, with a central handle and carved blades with stylised decoration and pigment,
86cm long.

£400-600

Provenance

Private collection Boston, USA.

461. A Massim drum

Trobriand Islands, Papua New Guinea

wood and reptile skin, with an integral side handle with bird heads,
the side with concentric circles and pierced flanges,
31.5cm long.

£150-250

**462. A Sepik River ancestor figure
Papua New Guinea**

wood,
26.5cm high, on a stand. (2)

£250-300

**463. A Melanesia paddle club
probably Papua New Guinea**

palmwood with a leaf shape blade with a swollen tip, the handle
terminal reduced,
132cm long.

£350-450

**464. Two Massim clubs
Trobriand Islands, Papua New Guinea**

palmwood and wood, with saw-like blades and domed finials,
73cm and 83cm long. (2)

£450-550



463 part



462



464



466



465

465. A Sepik River gope board

Papua New Guinea

wood with a central ancestor mask and with polychrome decoration, 81cm high, on a stand. (2)

£600-800

466. A Sepik war trumpet

Papua New Guinea

wood, carved a mask with applied shells, with a bird behind and with a carved body, pigment decoration, 65cm long.

£200-300

Provenance

Cyrille Vanheyst, Palm Beach, Sydney.

Cyrille Vanheyst made many trips to New Guinea between 1957 - 1970 in his capacity as a mine engineer advising on several major projects.

467. A Papuan Gulf bullroarer

Papua New Guinea

wood with a carved ancestor mask, 29.5cm long, on a stand. (2)

£300-400



467

468. A Samoa tapa cloth

Polynesia

with three bands of foliage,
19th century,
144 x 111cm, mounted.99cm
long. £200-300

469. A Vanuatu club

Melanesia

wood with an oval domed finial
above a toothed flange, with a
tapering shaft and a stepped
conical butt,
107cm long. £400-600

470. A Vanuatu club

Melanesia

wood with a conical finial with
incised linear stars above a
flange, the shaft with a flared
base and with further incised
decoration,
104.5cm long. £300-400

471. A Vanuatu club

Melanesia

wood with a conical finial
above a flange, the shaft with a
flared base,
94cm long. £300-400

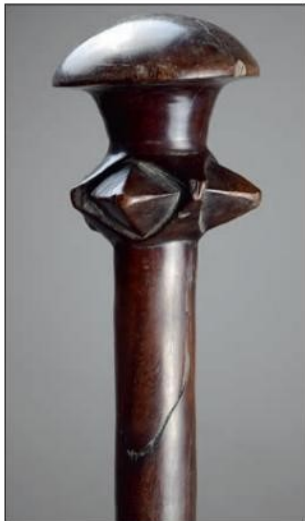
472. A Vanuatu club

Melanesia

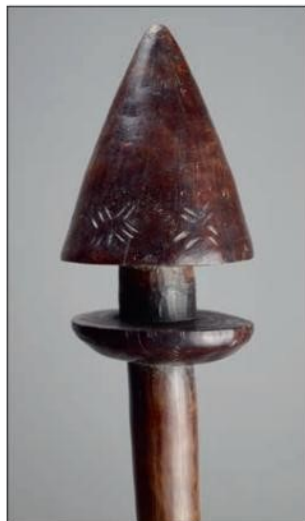
wood with a domed finial
above a flange, the shaft with a
flared base,
97cm long. £300-400



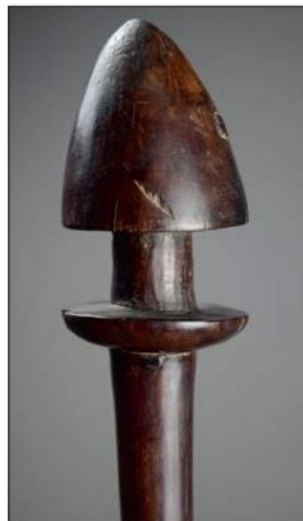
468



469



470



471



472

473. A Fiji long tapa cloth
Melanesia
 decorated with birds, plants
 and geometric designs, the
 long sides with cut fringes,
 458 x 94cm,
 and two Tongan tapa
 fragments,
 approx. 86 x 29cm. (3)
£100-200



473 detail

474. A Vanuatu club
Melanesia
 wood with a domed and ringed swollen
 finial, the shaft with a stepped tapering and
 domed butt,
 106.5cm long. *£300-400*



474

475. A Vanuatu club
Melanesia
 wood with a concave sided blade top with
 smaller conforming lugs on a cylindrical
 shaft with a lobed and conical terminal,
 106cm long. *£300-400*

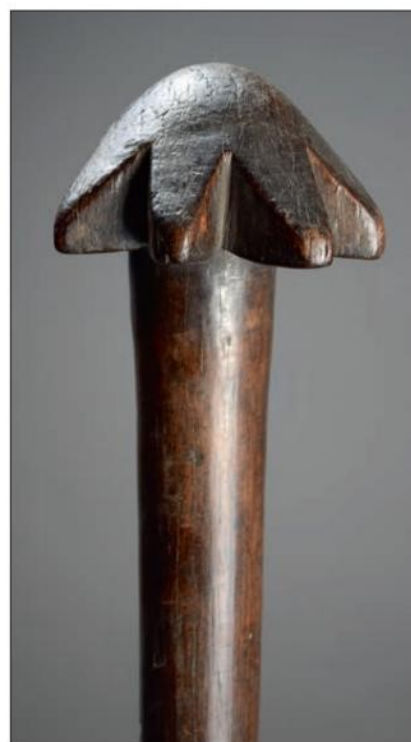
Provenance
 Henry (Harry) Alexander Nisbet, UK and
 Canada (1888-1966).



475

476. A Vanuatu club
Melanesia
 wood with a domed star finial and a
 tapering shaft with the remains of a
 geometric foot stamp,
 99cm long. *£200-300*

Provenance
 Henry (Harry) Alexander Nisbet, UK and
 Canada (1888-1966).



476



477



478

477. A Samoa pole club

Polynesia

wood, tapering with stepped bands, alternately decorated with carved zig-zags and geometric patterns and a raised point on each edge, the flared butt with a suspension loop, *damaged*, 108cm long.

£600-800

Provenance

Henry (Harry) Alexander Nisbet, UK and Canada (1888-1966)

478. A fly whisk

possibly Pacific Islands

bone and hair with fibre binding and an attachment hole in the handle, 48cm long.

£120-160



479



480

479. A North American cedar bow

150cm long, another bow, a palmwood spear and a collection of Oceanic arrows, with reed shafts and wood barbed tips. (23)

£200-300

Provenance

Henry (Harry) Alexander Nisbet, UK and Canada (1888-1966)

480. A Fiji sali club

Melanesia

wood with a spurred curved blade with zig-zag and diced carved decoration, the end with a ridge, the cylindrical shaft with a reduced terminal, 107cm long.

£600-800



481



482

481. A Fiji ula
Melanesia

wood with bone inlay, the ovoid head with crescent moons and stars with a chevron incised grip and a four point star inlaid to the end, 44cm long.

£1,500-2,000

482. A Fiji oil bowl
Melanesia

wood of rhomboid form with a grooved spout and short handle and raised on four short feet, the underside with adze markings, 55.5cm long.

£1,500-2,000

483. A Kanak club
New Caledonia, Melanesia

wood with a phallic terminal and a cylindrical grip, 86cm long.

£200-300

484. A Solomon Islands club
Melanesia

wood of spatulate form with a medial ridge to the top section, with a facet tapering shaft, 126cm long.

£300-400

485. A Solomon Islands parrying shield/club
Melanesia

wood with an edged curved blade with a scroll top and with a tapering conical terminal, 109.5cm long.

£250-350



483



484



485



486. A Kanak club
New Caledonia, Melanesia
 wood with a mushroom head on a tapering shaft and cylindrical butt, with plaited fibre binding, 63cm long. £600-800



487. A Guyana Sapakana club
South America
 wood with woven rattan and fibre, 63cm long. £800-1,200



488. A Vanuatu club
Melanesia
 wood and plaited grass, carved spheres, spikes and discs, 74cm long. £300-500



489. A pair of Admiralty Islands bracelets
Papua New Guinea
 beadwork, fibre and cloth, each with a geometric patterned panel and tasseled ties, 11 x 16cm the panels. (2) £350-450



490. Two Papua New Guinea ear ornaments / currency
possibly Solomon Islands, Melanesia
 sliced coconut shell, reed, shell and fibre, with inventory numbers 37 32 and 37 33, 8cm long. (2) £50-100



491. Two Palau shallow dishes
Caroline Islands, Micronesia
 turtleshell with shaped ends, early 20th century,
 18cm and 19.6cm long. (2)

£800-1,200



492. An Admiralty Islands lime container
Papua New Guinea

gourd with incised and burnt
 decoration, with painted
 accession numbers D.39.3
 1260, 1393,
 20cm long.

£450-550

Provenance
Ex collection La Korrigane,
Musee de L'homme.

493. A Bourgainville Island
currency shell 'Kopone'
Melanesia

white cowrie shell, with hand
 written identification label,
 9cm long.

£50-100

494. A Mailu Island coconut
scraper / spoon
Papua New Guinea

shell, and shaped as a whale,
 with an old hand written identification
 label,
 16cm long.

£200-300



493



494

495. Two Solomon Islands laonasi
pendants
Melanesia

shell, incised decorated with frigate
 birds, each with a suspension holes,
 4.5cm high. (2)

£350-450

Provenance
Old Dutch collection.

496. A Solomon Islands currency
ring
Melanesia

shell,
 12cm diameter.

£250-350



495



496



497. A Santa Cruz feather currency roll

Solomon Islands

with red honeybird feathers and hung with shell beads, each end coiled on a bark ring, one inscribed 9. HENRY MEPULULE, 99cm wide, on a stand. (2)

£5,000-7,000



498



499

498. A Fiji tapa beater

Melanesia

wood with linear and zig-zag carving, 37cm long.

£350-450

499. Two Papua New Guinea 'Kardingi' hats

Melanesia

plaited coconut leaf, with hand written identification label, 18.5cm wide folded. (2)

£100-150

Provenance

The larger - Purchased January 1938 from Mr Armstrong.



500. A Bourgainville Island fish hook

Melanesia

shell, turtleshell and fibre, with inscribed collection number 3853, 10cm long, and a Solomon Islands fish hook, with a shell and fibre tail, 7cm long. (2)

£100-150

501. A Nukuoro Atoll grater stool

Caroline Islands, Micronesia

wood of turtle form on raised supports with a base bar stretcher, 40.5cm high. £3,000-4,000

Provenance

Van Bussel, Amsterdam.



501

502. A Samoa short pole club

Polynesia

wood with bands of carved decoration and lime, 82.5cm long, and a Vanuatu club, with an oval domed head with a lozenge and ribbed section, with a knopped and domed base, 99.5cm long. (2) £300-400



502

503. A Rennell Island club

Solomon Islands, Melanesia

wood with a lobed head, 37.5cm long. £150-250



503

504. A Fiji kiakavo spurred club

Melanesia

wood with carved zig-zag bands, the head with a medial ridge and with a textured underside, the grip with further zig-zags and with a rounded butt, 100cm long. £500-800



504



505



505 detail

505. An Austral Islands paddle
Polynesia
 wood with all over carved decoration, with a large leaf shape blade carved sun motifs and x's, the shaft with x's and crescents with a flared terminal with eight dancing girls with necklaces and headdresses, the tops plain except one with rows of triangles, 2nd quarter 19th century, 125.5cm long. £4,000-6,000



506. An Admiralty Islands knife
Melanesia
 obsidian, wood, gum, lime and ochre, with carved bands on the handle, with handwritten identification labels. 24cm long.

£200-300



λ 507. A Torres Strait mourner's mask
Papua New Guinea
 turtleshell, the narrowing curved face
 with pierced eyes and and filed teeth with
 an applied hooked nose, the base with a
 scratched circle and V, the beard formed
 by two rows of pierced and worked
 triangle panels with applied feathers,
 the back with a bound chin support,
 27.5cm high, on a stand. £10,000-15,000

Provenance
Dr Vanparijs, Belgium.



508



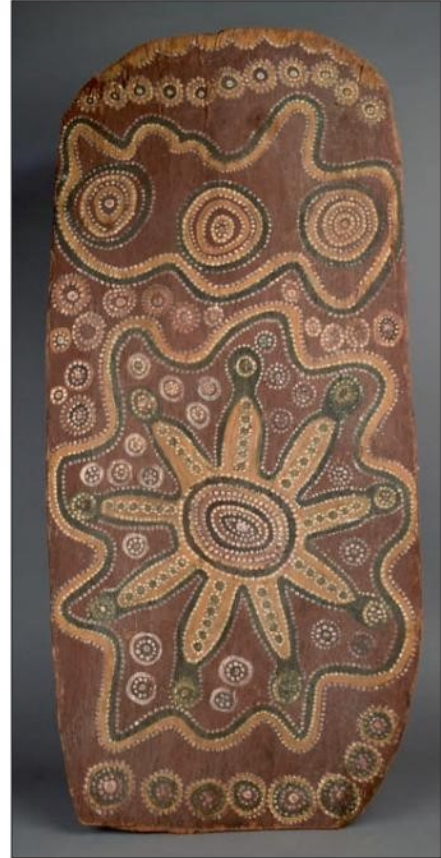
509



510



512



511

**508. An Aboriginal boomerang
Australia**

wood of crude form, inscribed *Mandora Station, Port Hedland, W.A.*,
64.5cm wide.

£350-450

**509. An Aboriginal boomerang
Australia**

wood with an adzed top surface,
57cm wide.

£200-300

**510. An Aboriginal boomerang
Australia**

wood with an adzed finish and with fibre and wire binding, and a handwritten paper identification label,
49cm wide.

£300-400

**511. An Aboriginal bark painting
Australia**

with abstract designs,
79 x 36cm

£150-250

**512. An Aboriginal boomerang
Australia**

wood decorated a snake and wavy lines, the back with an adze finish,
67.5cm long.

£150-200



512A

512A. An Aboriginal log coffin

Australia

decorated with various symbols and with lids either end, 97cm long. (3) £200-300

513. A cylindrical container and cover possibly Australian Aboriginal

bark with fibre and painted decoration, 13cm high. £80-120



513



514

514. An Aboriginal boomerang

Australia

wood, both sides with allover adze marks and inscribed LOUTH, DARLING RIVER N.S.W., 68cm wide. £150-250

515. An Aboriginal boomerang

Australia

wood with shallow grooves to one side and with burns, 65cm wide. £100-200



515

516. An Aboriginal boomerang

Australia

wood with incised linear decoration and with vacant mounds and a band, 77cm long. £200-300



516

517. An Aboriginal boomerang

Australia

wood with incised linear decoration to one side and a small area of scratch marks to the inside edge of the other, 89cm long. £250-350



517



518. An Aboriginal shield
Australia

wood, the curved front with allover carved decoration, the chamfered back with an integral handle,
91.5cm long.

£2,000-3,000



519. An Aboriginal boomerang

Australia

wood with a fine adzed finish to both of the rounded sides, one side with old burn marks,
75.8cm wide.

£250-350



520. An Aboriginal boomerang

Australia

wood with a dark patina,
72cm wide.

£250-350



521. An Aboriginal boomerang

Australia

wood,
71.5cm wide.

£150-200



522. An Aboriginal boomerang

Australia

wood,
72cm wide.

£250-300

523. An Aboriginal miniature Rainforest shield

Australia

wood with painted decoration and with an integral handle, 31.5cm high. £200-300

524. An Aboriginal club

Australia

wood with incised grooves and a plain pointed end handle, inscribed *Mandora Station, Port Hedland, W.A.*, 51cm long. £100-150

525. An Aboriginal club

Australia

wood with fine facet linear finish, with rounded ends, inscribed *Mandora Station, Port Hedland, W.A.*, 56.5cm long. £100-150

526. An Aboriginal club

Australia

wood with a conical head and tapering handle with a textured tip, 67cm long. £350-450

527. An Aboriginal club

Australia

wood with an ovoid head and tapering handle, with burn marks, 74.5cm long. £350-450



523



524



525



526



527



528



529

**528. A Maori hei-tiki pendant
New Zealand**

nephrite with a pierced suspension hole to the top,
10cm high. £1,500-1,800

**529. Two Maori ear pendants
New Zealand**

greenstone; one cylindrical with a tapering end, the
other faceted, both with a suspension hole,
8cm long. (2) £350-450



530



531

**530. A Maori feather box and cover
New Zealand**

wood with a dark stain and abalone shell inlay, oblong
with traditional carving of masks and tikis,
40cm long. £500-700

**531. A Maori dance paddle
New Zealand**

wood and abalone shell, with a leaf shape blade carved
a tiki mask and with grooves and notches, with a
stylised terminal,
61cm long,
a Maori feather box and a mask by H. Toka. (4) £500-700



532



533

532. A hei-tiki pendant

nephrite with a gilt metal mount,
4.8cm high, on a stand. (2) £350-450

**533. A Maori wahaika hand club
New Zealand**

wood with linear and notch decoration to the blade with
a tiki on the inside edge, the handle pierced for
attachment and with a ribbed butt,
35.5cm long. £650-800



534. A Maori mere
New Zealand
 greenstone of flattened spatulate form with an attachment hole and an elliptical stepped butt, 31.6cm long, on a stand. (2)
 £800-1,200



535. A Maori patu onewa
New Zealand
 greywacke of flattened spatulate form with an attachment hole and elliptical stepped butt, 19th century, 36cm long. £1,500-2,000
Provenance
Arthur Beau Palmer, Australia.



536. A Maori ceremonial mere
New Zealand
 greenstone of flattened spatulate form with a suspension hole and an elliptical tiered butt, with makers monogram, 40.5cm long, on a stand. (2)
 £800-1,200



537. A Maori piu piu
New Zealand
 flax and fibre, with a woven band hung with rolled flax beads, 55cm long. £200-300

538. A Maori child's tewhatewha staff
New Zealand
 wood with a curved blade, pierced at the base, the tapering shaft with a relief carved Janus tiki head, with haliotis shell eyes, one missing, 96.5cm long. £500-700



537

END OF SALE

538

OLD MASTERS, BRITISH & EUROPEAN PAINTINGS
Wednesday 15th March 2017



George Chinnery (1774-1852)

Portrait miniature of Maria Graham of the Graham family of South Africa
86 x 68mm

Estimate: £4,500 - £5,000

ENQUIRIES

Victor Fauvelle | Tel: +44 (0)1722 424503 | vf@woolleyandwallis.co.uk
Jo Butler | Tel: +44 (0)1722 424592 | jb@woolleyandwallis.co.uk

MEDALS, COINS, ARMS & ARMOUR

Tuesday 28th March 2017

Entries are now being accepted for this sale



A fine Indian shield, with repousse decoration including figures of Hindu deities mounted on their vanaha, diameter 53cm.

Estimate: £400 - £600

ENQUIRIES

Ned Cowell | Tel: +44 (0)1722 341469 | nc@woolleyandwallis.co.uk

CLARICE CLIFF, ART DECO & DESIGN

Wednesday 29th March 2017



Dame Lucie Rie (1902-1995)

A fine early porcelain bowl.

Provenance: Margaret Pilkington OBE

Estimate: £6,000 - £10,000

ENQUIRIES

Michael Jeffery | Tel: +44 (0)1722 424505 | mj@woolleyandwallis.co.uk

ASIAN ART

Tuesday 16th & Wednesday 17th May 2017

Entries are now being accepted for this sale



A large Chinese Grey-Green Jade Archaistic *Fang Gui*, Ming Dynasty, 23.5cm.
Provenance: Rutherford collection, Bluett & Sons, 1948, no.134, Sydney Moss 1965.

Estimate: £30,000 - £50,000

ENQUIRIES

John Axford | Tel: +44 (0)1722 424506 | jea@woolleyandwallis.co.uk

Auction Information

OPENING HOURS

Monday to Friday 9am – 5.30pm
and 10am to 1pm on Saturdays.

VIEWING

All our auctions are on view at least two days prior to the sale and details will be found in the relevant catalogues.

BIDDING IN THE ROOM

To bid at auction you will need a paddle number. This can be obtained from the office either during the view or on the day of the sale. We now provide permanent paddle numbers which can be used for any future sale, once registered.

REGISTERING WITH US

All first time buyers need to register with us. Once registration is complete you will be provided with a permanent paddle number which can be used in all future sales.

To register, you will need to provide two forms of identification:

1. a passport or photographic driving licence
2. a utility bill or document showing your name and address

You can register in person or by contacting the office on 01722 424500 or emailing

enquiries@woolleyandwallis.co.uk

You will be asked to show your documents, or fax or email copies.

PLEASE NOTE: Registering with the-saleroom.com or through our website does not automatically register you with us.

COMMISSION BIDDING

If you are unable to attend the sale you can leave a commission bid. This will be executed on your behalf by the auctioneer who will purchase the lot as cheaply as possible bearing in mind any reserve price and other bids.

TELEPHONE BIDDING

It is usually possible to bid on the telephone by prior arrangement with the office.

BUYER'S PREMIUM

Each lot is subject to a Buyer's Premium of 22% + VAT on the first £500,000 of the hammer price and 12% + VAT thereafter.

LIVE ONLINE BIDDING

Live online bidding is now available for most of our auctions via the-saleroom.com, enabling you to take part in the bidding from anywhere in the world, live as it happens. To bid online you need to register at www.the-saleroom.com, subject to approval.

There is a 3% + VAT charge for this service.

In completing the bidder registration on www.the-saleroom.com and providing your credit card details and unless alternative arrangements are agreed with Woolley and Wallis Salisbury Salerooms Ltd, you:

1. authorise Woolley and Wallis Salisbury Salerooms Ltd, if they so wish, to charge the credit card given in part or full payment, including all fees, for items successfully purchased in the auction via the-saleroom.com, and
2. confirm that you are authorised to provide these credit card details to Woolley and Wallis Salisbury Salerooms Ltd through www.the-saleroom.com and agree that Woolley and Wallis Salisbury Salerooms Ltd are entitled to permit the shipping of the goods to the card holder name and card holder address provided in fulfilment of the sale.

CONDITION REPORTS

The relevant department will be pleased to give condition reports on any lot, where practical. All weights and measures given in the catalogue should be regarded as approximate.

The colours printed in the catalogue are not necessarily true.

SALE RESULTS

These will be posted on our website shortly after the sale.

PACKING AND SHIPPING

Woolley & Wallis do not offer a packing and despatch service but the following are carriers in our area.

Alban Shipping 01582 493 099
info@albanshipping.co.uk
www.albanshipping.co.uk

Mailboxes 01264 360 333
info@mbeandover.co.uk
www.mbe.co.uk/andover

Pack & Send 0845 465 0564
sales@packsend.co.uk
www.packsend.co.uk

Please note that we cannot be held responsible for any damage or loss to items once they are in the hands of a carrier.

PAYMENT AND CLEARANCE

Payment is due immediately after the auction in pounds sterling. If you are a first time buyer we will need your name, address and bank details and will require funds to be cleared before purchases can be released.

The following methods of payment may be made:

Bankers draft, cashiers cheque, personal cheque, travellers cheques, debit and credit cards and cash up to a sterling equivalent of €15,000. We are no longer able to accept card payments of over £1,000 where the card-holder is not present.

Wire transfers should be sent to:

Lloyds Bank plc, Blue Boar Row, Salisbury SP1 1DB.
Account no. 00957707
Sort code 30-97-41
IBAN no. GB20LOYD30974100957707
BIC code LOYDGB21063

Credit cards: Visa or Mastercard for which there is a 2% surcharge + VAT

Debit cards: Delta, Switch, Connect

Where practical, payment can be made and purchases collected during the auction.

Please note that furniture and clock lots will normally remain in our salerooms for three working days following each sale, after which they will be removed to our store and arrangements for collection must be made in advance with the office.

Storage charges will be levied on all lots in the furniture and works of art and clock sales not collected within 30 calendar days of the sale. This will include a handling fee of £20 (+ VAT) per consignment and a storage charge of £2 (+ VAT) per lot per day. No goods will be allowed to be collected until these charges have been paid.

LOT SYMBOLS

VAT

Lots marked with an dagger (†) are subject to VAT on the hammer price. Lots marked with an omega (Ω) have been temporarily imported from outside the EU and are subject to VAT at 5% on the hammer price and the buyer's premium. In online catalogues, the Sales Tax % column indicates the rate of VAT on hammer price.

CITES REGULATIONS

Please note that lots marked **A** may be subject to CITES Regulations when exported.

The CITES Regulations may be found at www.defra.gov.uk/ahvla-en/imports-exports/cites/

ARTIST'S RESALE RIGHT / DROIT DE SUITE

Lots marked with a **+** symbol are potentially subject to a levy.

Droit de Suite is a royalty payable to a qualifying artist or the artist's heirs each time a work is resold during the artist's lifetime and up to a period of 70 years after the artist's death.

Royalties are calculated on a sliding percentage scale based on the hammer price excluding the buyer's premium. The royalty does not apply to lots selling below the sterling equivalent of €1,000 and the maximum royalty payable on any single lot is the sterling equivalent of €12,500.

Droit de Suite, which is not subject to VAT, will be added to the buyer's purchase price and then passed on to the relevant collecting agency.

Please enquire for the accepted exchange rate on the day of the sale.

Royalties for Droit de Suite are as follows:

4%	Up to €50,000
3%	€50,000.01 - 200,000
1%	€200,000.01 - 350,000
0.5%	€350,000.01 - 500,000
0.25%	In excess of €500,000
Up to a maximum levy of €12,500	

FIREARMS

Lots marked **F** in the catalogue are subject to the UK firearms/shotgun licencing regime, and may only be viewed and/or purchased by individuals with appropriate licences. Such lots are offered on an auctioneer's permit, and must be collected prior to the expiry thereof. For further information, please contact Ned Cowell.

SOCIETY OF FINE ART AUCTIONEERS AND VALUERS
and the ROYAL INSTITUTION OF CHARTERED SURVEYORS
CONDITIONS OF BUSINESS

INFORMATION FOR BUYERS

1. **Introduction.** The following informative notes are intended to assist Buyers, particularly those inexperienced or new to our salerooms. All sales are conducted on our printed Conditions of Sale which are readily available for inspection and normally accompany catalogues. Our staff will be happy to help you if there is anything you do not fully understand.
2. **Agency.** As auctioneers we usually contract as agents for the seller whose identity, for reasons of confidentiality, is not normally disclosed. Accordingly if you buy your primary contract is with the seller.
3. **Estimates.** Estimates are designed to help buyers gauge what sort of sum might be involved for the purchase of a particular lot. The lower estimate may represent the reserve price and certainly will not be below it. Estimates do not include the Buyer's Premium or VAT (where chargeable). Estimates are prepared some time before the sale and may be altered by announcement before the sale. They are in no sense definitive.
4. **The purchase price.** The Buyer shall pay the hammer price together with a premium thereon of 22% on the first £500,000 and 12% thereafter + VAT at the appropriate rate.
5. **VAT. (*)** indicates that VAT at the current standard rate is payable by the purchaser on the hammer price as well as being an element in the buyer's premium. This imposition of VAT is likely to be because the seller is registered for VAT within the European Union and is not operating the Dealers Margin Scheme or because VAT is due at 20% on importation into the UK. The double symbol (**) indicates that the lot has been imported from outside the European Union and the present position is that these lots are liable to a reduced rate of VAT (5%) on the gross lot price (i.e. both the hammer price and the buyer's premium). Lots which appear without either of the above symbols indicate that no VAT is payable on the hammer price. This is because such lots are sold using the Auctioneers' Margin Scheme and it should be noted that the VAT included within the Premium is not recoverable as input tax.
6. We are, primarily, agents for the seller. We are dependent on information provided by the seller and whilst we may inspect lots and act reasonably in taking a general view about them we are normally unable to carry out a detailed or any examination of lots in order to ascertain their condition in the way in which it would be wise for a buyer to do. Intending buyers have ample opportunity for inspection of goods and, therefore, accept responsibility for inspecting and investigating lots in which they may be interested. Please note carefully the exclusion of liability for the condition of lots contained in the Conditions of Sale. Neither the seller nor we, as the auctioneers, accept any responsibility for their condition. In particular, mechanical objects of any age are not guaranteed to be in working order. However, in so far as we have examined the goods and make a representation about their condition, we shall be liable for any defect which that examination ought to have revealed to the auctioneer but which would not have been revealed to the buyer had the buyer examined the goods. Additionally, in specified circumstances lots misdescribed because they are 'deliberate forgeries' may be returned and repayment made. There is a 3 week time limit. (The expression 'deliberate forgery' is defined in our Conditions of Sale).
7. **Electrical goods.** These are sold as 'antiques' only and if bought for use must be checked over for compliance with safety regulations by a qualified electrician first.
8. **Export of goods.** Buyers intending to export goods should ascertain (a) whether an export licence is required for the goods to leave the U.K. and (b) whether there is any specific prohibition on importing the goods in question into the destination country because, e.g. they may contain prohibited materials such as ivory. Charges may be applicable for export licences. Ask us if you need help.
The denial of any permit or licence shall not justify cancellation or rescission of the sale contract or any delay in payment.
9. **Bidding.** Bidders will be required to register before the sale commences and lots will be invoiced to the name and address on the registration form. Some form of identification will be required if you are unknown to us. Please enquire in advance about our arrangements for telephone bidding.
10. **Commission bidding.** Commission bids may be left with the auctioneers indicating the maximum amount to be bid excluding buyers' premium. They will be executed as cheaply as possible having regard to the reserve (if any) and competing bids. If two buyers submit identical commission bids the auctioneers may prefer the first bid received. Please enquire in advance about our arrangements for the leaving of commission bids by telephone or fax.
11. **Methods of Payment.** As a general rule any cheques tendered will need to be cleared before removal of the goods is permitted. Please discuss with our Office in advance of the sale if other methods of payment are envisaged (except cash).

12. **Collection and storage.** Please note what the Conditions of Sale state about collection and storage. It is important that goods are paid for and collected promptly. Any delay may involve the buyer in paying storage charges.

TERMS OF CONSIGNMENT FOR SELLERS

1. **Interpretation.** In these Terms the words 'you', 'yours', etc. refer to the Seller and if the consignment of goods to us is made by an agent we assume that the Seller has authorised the consignment and that the consignor has the Seller's authority to contract. Similarly the words 'we', 'us', etc. refer to the Auctioneers.
 2. **Commission** is charged to sellers at the following rates: 15% + VAT on each lot sold for up to £999, 10% + VAT on each lot realising £1,000 and above.
 3. **Removal costs.** Items for sale must be consigned to the sale room by any stated deadline and at your expense. We may be able to assist you with this process but any liability incurred to a carrier for haulage charges is solely your responsibility.
 4. **Loss and damage waiver.** We are not regulated by the FSA for the provision of insurance to clients. However, we for our own protection assume liability for property consigned to us at lower pre-sale estimate. To justify accepting liability, we make a charge of 1.5% of the hammer price plus VAT or, if unsold, our mid estimate of the hammer price. If the owner of goods consigned instructs us in writing not to take such action, they then remain at owner's risk unless and until the property in them passes to the Buyer or they are collected by or on behalf of the owner, and clause 4 is inapplicable.
 5. **Illustrations.** The cost of any illustrations is borne by you. If we consider that the lot should be illustrated your permission will usually be asked first. The copyright in respect of such illustrations shall be the property of us, the auctioneers, as is the text of the catalogue.
 6. **Minimum bids and our discretion.** Goods may be offered subject to a reserve agreed between us before the sale in accordance with clause 7.
 7. We may sell lots below the reserve provided we account to you for the same sale proceeds as you would have received had the reserve been the hammer price. If you specifically give us 'discretion' we may accept a bid of up to 10% below the formal reserve.
- Reserves.**
- (a) You are entitled to place prior to the auction a reserve on any lot consigned, being the minimum hammer price at which that lot may be sold. Reserves must be reasonable and we may decline to offer goods which in our opinion would be subject to an unreasonably high reserve (in which case goods carry the storage and insurance charges stipulated in these Terms of Consignment).
 - (b) A reserve once set cannot be changed except with our consent.
 - (c) Where a reserve has been placed only we may bid on your behalf and only up to the reserve (if any) and you may in no circumstances bid personally.
8. **Electrical items.** These are subject to detailed statutory safety controls. Where such items are accepted for sale you accept responsibility for the cost of testing by external contractors. Goods not certified as safe by an electrician (unless antiques) will not be accepted for sale. They must be removed at your expense on your being notified. We reserve the right to dispose of unsafe goods as refuse, at your expense.
 9. **Soft furnishings.** The sale of soft furnishings is strictly regulated by statute law in the interests of fire safety. Goods found to infringe safety regulations will not be offered and must be removed at your expense. We reserve the right to dispose of unsafe goods as refuse, at your expense. The rights of disposal referred to in clause 8 and 9 are subject to the provisions of The Torts (Interference with Goods) Act 1977, Schedule 1, a copy of which is available for inspection on request.
 10. **Descriptions.** Please assist us with accurate information as to the provenance etc. of goods where this is relevant. There is strict liability for the accuracy of descriptions under modern consumer legislation and in some circumstances responsibility lies with sellers if inaccuracies occur. We will assume that you have approved the catalogue description of your lots unless informed to the contrary. Where we are obliged to return the price to the buyer when the lot is a deliberate forgery under Condition 15 of the Conditions of Sale and we have accounted to you for the proceeds of sale you agree to reimburse us the sale proceeds. The liability to reimburse the sale proceeds shall not arise where you are acting reasonably and honestly and are unaware of the forgery but we are or ought to have been aware of it.

11. **Unsold and withdrawn items.** If an item is unsold it may with your consent be re-offered at a future sale. Where in our opinion an item is unsaleable you must collect such items from the saleroom promptly on being so informed. Otherwise, storage charges may be incurred. We reserve the right to charge for storage in these circumstances at a reasonable daily rate.
12. **Withdrawn and bought in items.** These are liable to incur a charge of up to 10% plus VAT of the reserve or low estimate on being bought in or withdrawn after being catalogued.
13. **Conditions of Sale.** You agree that all goods will be sold on our Conditions of Sale. In particular you undertake that you have the right to sell the goods either as owner or agent for the owner. You undertake to compensate us and any buyer or third party for all losses liabilities and expenses incurred in respect of and as a result of any breach of this undertaking.
14. **Authority to deduct commission and expenses and retain premium and interest.**
 - (a) You authorise us to deduct commission at the stated rate and all expenses incurred for your account from the hammer price and consent to our right to retain beneficially the premium paid by the buyer in accordance with our Conditions of Sale and any interest earned on the sale proceeds until the date of settlement.
 - (b) You authorise us in our discretion to negotiate a sale by private treaty not later than the close of business on the day of the sale in the case of lots unsold at auction, in which case the same charges will be payable as if such lots had been sold at auction and so far as appropriate these terms apply.
15. **Warehousing.** We disclaim all liability for goods delivered to our saleroom without sufficient sale instructions and reserve the right to make minimum warehousing charge of £2 per lot per day. Unsold lots are subject to the same charges if you do not remove them within a reasonable time of notification. If not removed within three weeks we reserve the right to sell them and defray charges from any net proceeds of sale or at your expense to consign them to the local authority for disposal.
16. **Settlement.** Subject to our normal trading conditions, payment will be made by BACS or cheque four weeks after the sale unless the buyer has not paid for the goods. In this case no settlement will then be made but we will take your instructions in the light of our Conditions of Sale. You authorise any sums owed by you to us on other transactions to be deducted from the sale proceeds. You must note the liability to reimburse the proceeds of sale to us as under the circumstances provided for in Condition 10 above. You should therefore bear this potential liability in mind before parting with the proceeds of sale until the expiry of 28 days from the date of sale.

CONDITIONS OF SALE

Woolley & Wallis Salisbury Salerooms Ltd carries on business with bidders, buyers and all those present in the auction room prior to or in connection with a sale on the following General Conditions and on such other terms, conditions and notices as may be referred to herein.

1. DEFINITIONS

In these Conditions:

- (a) 'auctioneer' means Woolley & Wallis Salisbury Salerooms Ltd or its authorised auctioneer, as appropriate;
- (b) 'deliberate forgery' means an imitation made with the intention of deceiving as to authorship, origin, date, age, period, culture or source but which is unequivocally described in the catalogue as being the work of a particular creator and which at the date of the sale had a value materially less than it would have had if it had been in accordance with the description;
- (c) 'hammer price' means the level of bidding reached (at or above any reserve) when the auctioneer brings down the hammer;
- (d) 'terms of consignment' means the stipulated terms and rates of commission on which Woolley & Wallis Salisbury Salerooms Ltd accepts instructions from sellers or their agents;
- (e) 'total amount due' means the hammer price in respect of the lot sold together with any premium, Value Added Tax chargeable and any additional charges payable by a defaulting buyer under these Conditions;
- (f) 'sale proceeds' means the net amount due to the seller, being the hammer price of the lot sold less commission at the stated rate, Value Added Tax chargeable and any other amounts due to us by the seller in whatever capacity and however arising.
- (g) 'You', 'Your', etc. refer to the buyer as identified in Condition 2.
- (h) The singular includes the plural and vice versa as appropriate.

2. BIDDING PROCEDURES AND THE BUYER

- (a) Bidders are required to register their particulars before bidding and to satisfy any security arrangements before entering the auction room to view or bid;
- (b) the maker of the highest bid accepted by the auctioneer conducting the sale shall be the buyer at the hammer price and any dispute about a bid shall be settled at the auctioneer's absolute discretion by reoffering the Lot during the course of the auction or otherwise. The auctioneer shall act reasonably in exercising this discretion.
- (c) Bidders shall be deemed to act as principals.
- (d) Our right to bid on behalf of the seller is expressly reserved up to the amount of any reserve and the right to refuse any bid is also reserved.

3. INCREMENTS

Bidding increments shall be at the auctioneer's sole discretion.

4. THE PURCHASE PRICE

The Buyer shall pay the hammer price together with a premium thereon of 22% on the first £500,000 and 12% thereafter + VAT at the appropriate rate.

5. VALUE ADDED TAX

Value Added Tax on the hammer price is imposed by law on all items affixed with an asterisk or double asterisk. Value Added Tax is charged at the appropriate rate prevailing by law at the date of sale and is payable by buyers of relevant lots. (Please refer to 'Information for Buyers' for a brief explanation of the VAT position).

6. PAYMENT

- (a) Immediately a lot is sold you will:
 - (i) give to us, if requested, proof of identity, and
 - (ii) pay to us the total amount due in pounds sterling
- (b) Any payments by you to us may be applied by us towards any sums owing from you to us on any account whatever without regard to any directions of you or your agent, whether express or implied.

7. TITLE AND COLLECTION OF PURCHASES

- (a) The ownership of any Lots purchased shall not pass to you until you have made payment in full to us of the total amount due.
- (b) You shall at your own risk and expense COLLECT any lots that you have purchased and paid for from our premises not later than 3 working days following the day of the auction or upon the clearance of any cheque used for payment (IF LATER) after which you shall be responsible for any COLLECTION, storage and insurance charges.
- (c) No purchase MAY be COLLECTED AND WE SHALL NOT RELEASE ANY LOT TO YOU OR YOUR AGENT until it has been paid for.

8. REMEDIES FOR NON-PAYMENT OR FAILURE TO COLLECT PURCHASES

- (a) If any Lot is not paid for in full and taken away in accordance with these Conditions or if there is any other breach of these Conditions, we, as agent for the seller and on our own behalf, shall at our absolute discretion and without prejudice to any other rights we may have, be entitled to exercise one or more of the following rights and remedies:
 - (i) to proceed against you for damages for breach of contract;
 - (ii) to rescind the sale of that lot and/or any other lots sold by us to you;
 - (iii) to resell the lot (by auction or private treaty) in which case you shall be responsible for any resulting deficiency in the total amount due (after crediting any part payment and adding any resale costs). Any surplus so arising shall belong to the seller;
 - (iv) to remove, store and insure the lot at your expense and, in the case of storage, either at our premises or elsewhere;
 - (v) to charge interest at a rate not exceeding 1.5% per month on the total amount due to the extent it remains unpaid for more than 3 working days after the sale;
 - (vi) to retain that or any other lot sold to you until you pay the total amount due;
 - (vii) to reject or ignore bids from you or your agent at future auctions or to impose conditions before any such bids shall be accepted;
 - (viii) to apply any proceeds of sale of other Lots due or in future becoming due to you towards the settlement of the total amount due and to exercise a lien (that is a right to retain possession of any of your property in our possession for any purpose until the debt due is satisfied).
- (b) We shall, as agent for the seller and on our own behalf pursue these rights and remedies only so far as is reasonable to make appropriate recovery in respect of breach of these conditions

9. THIRD PARTY LIABILITY

All members of the public on our premises are there at their own risk and must note the lay-out of the accommodation and security arrangements. Accordingly neither the auctioneer nor our employees or agents shall incur liability for death or personal injury (except as required by law by reason of our negligence) or similarly for the safety of the property of persons visiting prior to or at a sale.

10. COMMISSION BIDS

Whilst prospective buyers are strongly advised to attend the auction and are always responsible for any decision to bid for a particular lot and shall be assumed to have carefully inspected and satisfied themselves as to its condition, we will if so instructed clearly and in writing execute bids on their behalf. Neither the auctioneer nor our employees or agents shall be responsible for any failure to do so save where such failure is unreasonable. Where two or more commission bids at the same level are recorded we reserve the right in our absolute discretion to prefer the first bid so made.

11. WARRANTY OF TITLE AND AVAILABILITY

The seller warrants to the auctioneer and you that the seller is the true owner of the property consigned or is properly authorised by the true owner to consign it for sale and is able to transfer good and marketable title to the property free from any third party claims.

12. AGENCY

The auctioneer normally acts as agent only and disclaims any responsibility for default by sellers or buyers.

13. TERMS OF SALE

The seller acknowledges that lots are sold subject to the stipulations of these Conditions in their entirety and on the Terms of Consignment as notified to the consignor at the time of the entry of the lot.

14. DESCRIPTIONS AND CONDITION

- (a) Whilst we seek to describe lots accurately, it may be impractical for us to carry out exhaustive due diligence on each lot. Prospective buyers are given ample opportunities to view and inspect before any sale and they (and any independent experts on their behalf) must satisfy themselves as to the accuracy of any description applied to a lot. Prospective buyers also bid on the understanding that, inevitably, representations or statements by us as to authorship, genuineness, origin, date, age, provenance, condition or estimated selling price involve matters of opinion. We undertake that any such opinion shall be honestly and reasonably held and accept liability for opinions given negligently or fraudulently. Subject to the foregoing neither we the auctioneer nor our employees or agents nor the seller accept liability for the correctness of such opinions and all conditions and warranties, whether relating to description, condition or quality of lots, express, implied or statutory, are hereby excluded. This Condition is subject to the next following Condition concerning deliberate forgeries and applies save as provided for in paragraph 6 'information to buyers'.
- (b) Private treaty sales made under these Conditions are deemed to be sales by auction for purposes of consumer legislation.

15. FORGERIES

Notwithstanding the preceding Condition, any lot which proves to be a deliberate forgery (as defined) may be returned to us by you within 21 days of the auction provided it is in the same condition as when bought, and is accompanied by particulars identifying it from the relevant catalogue description and a written statement of defects. If we are satisfied from the evidence presented that the lot is a deliberate forgery we shall refund the money paid by you for the lot including any buyer's premium provided that (1) if the catalogue description reflected the accepted view of scholars and experts as at the date of sale or (2) you personally are not able to transfer a good and marketable title to us, you shall have no rights under this condition. The right of return provided by this Condition is additional to any right or remedy provided by law or by these Conditions of Sale.

GENERAL

16. We shall have the right at our discretion, to refuse admission to our premises or attendance at our auctions by any person.
17. (a) Any right to compensation for losses liabilities and expenses incurred in respect of and as a result of any breach of these Conditions and any exclusions provided by them shall be available to the seller and/or the auctioneer as appropriate.
- (b) Such rights and exclusions shall extend to and be deemed to be for the benefit of employees and agents of the seller and/or the auctioneer who may themselves enforce them.
18. Any notice to any buyer, seller, bidder or viewer may be given by first class mail or Swiftmail in which case it shall be deemed to have been received by the addressee 48 hours after posting.
19. Special terms may be used in catalogue descriptions of particular classes of items in which case the descriptions must be interpreted in accordance with any glossary appearing in the catalogue.
20. Any indulgence extended to bidders buyers or sellers by us notwithstanding the strict terms of these Conditions or of the Terms of Consignment shall affect the position at the relevant time only and in respect of that particular concession only; in all other respects these Conditions shall be construed as having full force and effect.
21. English law applies to the interpretation of these Conditions.

PAINTINGS, DRAWINGS, LITHOGRAPHS, ENGRAVINGS AND PRINTS

In accordance with long standing practice in Fine Art Sale Rooms certain terms used in descriptions in the Catalogue have the meanings ascribed to them in the glossary below.

Glossary

Any statement as to authorship, attribution, origin, date, age, provenance and condition is a statement of opinion and is not to be taken as a statement of fact. The Company reserves the right, in forming their opinion, to consult and rely upon any expert or authority considered by them to be reliable.

- (a) Edward Lear: In our opinion a work by the artist. (When the artist's forename(s) is not known, a series of asterisks, followed by the surname of the artist, whether preceded by an initial or not, indicates that in our opinion the work is by the artist named.
- (b) Attributed to Edward Lear: In our opinion probably a work by the artist but less certainly as to authorship is expressed than in the preceding category.
- (c) Studio of Edward Lear: In our opinion a work by an unknown hand in the studio of the artist which may be or may not have been executed under the artist's direction.
- (d) Circle of Edward Lear: In our opinion a work by an as yet unidentified but distinct hand, closely associated with the named artist but not necessarily his pupil.
- (e) Style of ...; Follower of Edward Lear: In our opinion a work by a painter working in the artist's style, contemporary or nearly contemporary, but not necessarily his pupil.
- (f) Manner of Edward Lear: In our opinion a work in the style of the artist and of a later date.
- (g) After Edward Lear: In our opinion a copy of a known work of the artist.
- (h) The term signed and/or dated and/or inscribed means that in our opinion the signature and/or date and/or inscription are from the hand of the artist.
- (i) The term bears a signature and/or date and/or inscription means that in our opinion the signature and/or date and/or inscription have been added by another hand.
- (j) Dimensions are given height before width.
- (k) Pictures are framed unless otherwise stated.

BOOK AUCTIONS

If, on collation, any named item in this catalogue proves defective in text or illustration, the lot may be returned within 14 days of the sale with the defects stated in writing. This proviso shall not apply to defects stated in the catalogue or announced at the time of sale; nor to the absence of blanks, half titles, tissue guards or advertisements, damage in respect of bindings, stains, spotting, marginal tears or other defects not affecting completeness of text or illustration; nor to drawings, autographs, letters or manuscripts, signed photographs, music, atlases, maps or periodicals; nor to books not identified by title; nor to books sold not subject to return.

ARTIST'S RESALE RIGHT / DROIT DE SUITE

Droit de Suite is a royalty payable to a qualifying artist or the artist's heirs each time a work is resold during the artist's lifetime and up to a period of 70 years after the artist's death.

Royalties are calculated on a sliding percentage scale based on the hammer price excluding the buyer's premium. The royalty does not apply to lots selling below the sterling equivalent of €1,000 and the maximum royalty payable on any single lot is the sterling equivalent of €12,500.

Droit de Suite, which is not subject to VAT, will be added to the buyer's purchase price and then passed on to the relevant collecting agency by the auctioneer.

Please enquire for the accepted exchange rate on the day of the sale.

Royalties for Droit de Suite are as follows:

4% Up to €50,000
3% €50,000.01 - 200,000
1% €200,000.01 - 350,000
0.5% €350,000.01 - 500,000
0.25% In excess of €500,000

Up to a maximum levy of €12,500

Lots marked with a \$ symbol are potentially subject to the levy.

Valuations

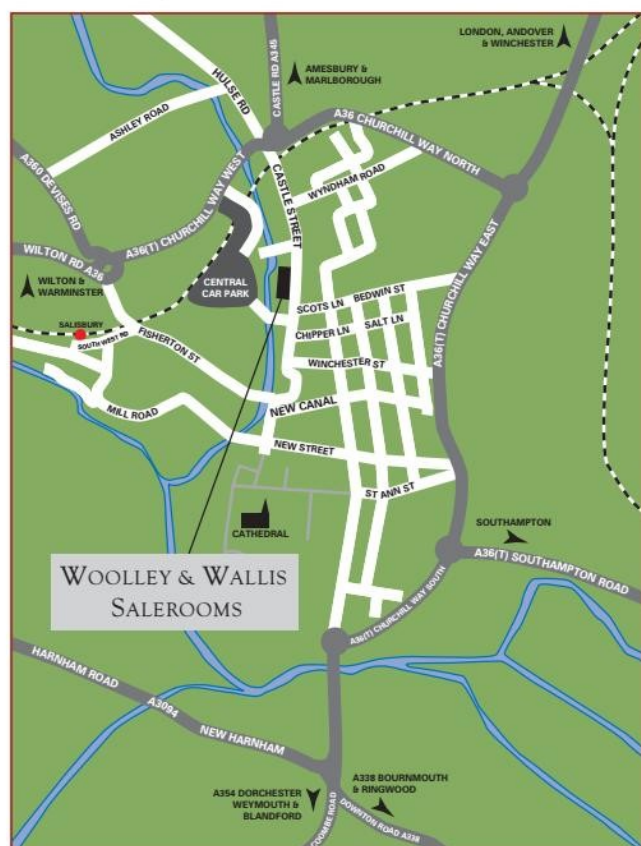
Valuations are a core part of our business and are usually carried out by a senior specialist or directors. Accuracy, speed and above all confidentiality are paramount.

INSURANCE VALUATIONS

Written valuations for insurance can vary from a single item to a large estate. Before starting we discuss the various options available so that the valuation is specifically tailored to individual client's needs.

For valuations of an entire house contents an itemised bound valuation is produced and can be accompanied by photographs when required. In addition to providing an inventory, written valuations can prevent painful arguments with a loss adjuster in the event of a claim.

Woolley & Wallis valuations are accepted by all leading insurance companies.



Woolley & Wallis Salisbury Salerooms Ltd.
51-61 Castle Street, Salisbury
Wiltshire SP1 3SU

Registered in England No. 2998482

VAT No: 631 9832 29

Design & Production by Jamm Design Ltd.
Tel. 020 7424 7830
www.jammdesign.co.uk

PROBATE VALUATIONS

We offer a speedy and professional service for executors and trustees and provide bound valuations for probate and duplicate copies when required. Since security is often a consideration, we can usually arrange for a house to be cleared and sent for auction, our Valuations Department ensures that executors are informed of which sales are involved and the results thereof.

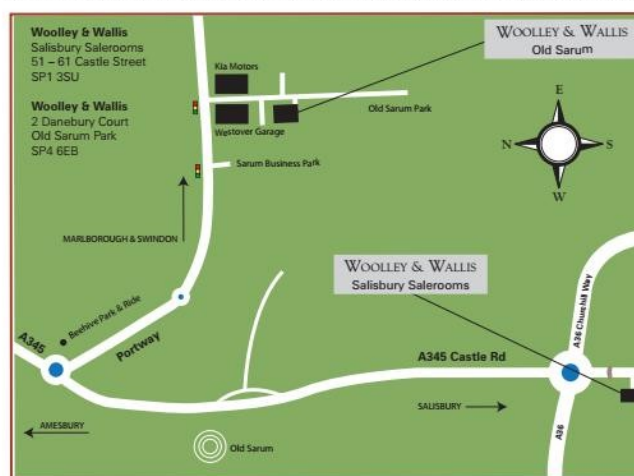
We also carry out valuations for Family Division, Capital Gains Tax, and Private Treaty Sales.

Contact Christine Johnson 01722 424509

FREE AUCTION VALUATIONS

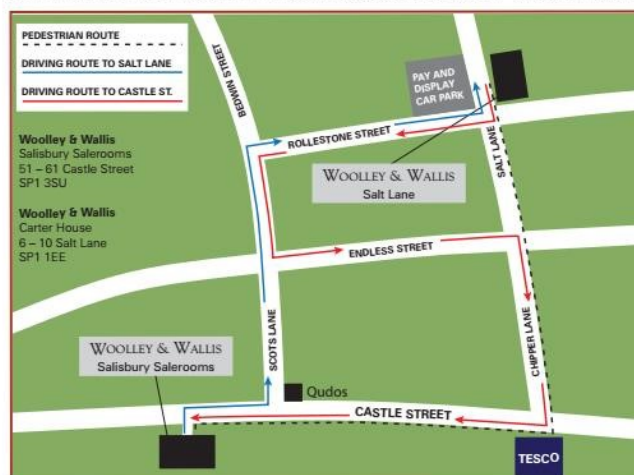
Free verbal valuations of items for sale are available at our Castle Street salerooms. Please telephone the relevant specialist or call our office on 01722 424500.

DIRECTIONS FROM WOOLLEY & WALLIS CASTLE STREET TO OLD SARUM



Follow A345 for 1.7 miles. At Beehive Park & Ride follow the signs for A338 Swindon and Marlborough.

DIRECTIONS FROM WOOLLEY & WALLIS CASTLE STREET TO SALT LANE



Due to the one-way system of Salisbury, please follow the red route when driving from Salt Lane to Castle Street.

WOOLLEY & WALLIS

Absentee Bid Form

Tribal Art & Antiquities

Wednesday 1st March 2017

Please bid, on my behalf, for the undermentioned lots up to the prices shown which do not include the buyer's premium or any V.A.T. payable on lots. These bids are to be executed as cheaply as is permitted by other bids, and/or reserves if any, and subject to the Conditions of Sale printed in the Catalogue. Please note we cannot guarantee that bids received after 4pm on the day prior to the auction will be executed.

Billing Name (please print) _____

Address _____

Postcode _____

Daytime telephone _____

Email _____

All accounts must be settled within 21 days. There is no surcharge for debit card payments, but for credit cards there will be a 2% (+VAT) surcharge. ID is required for all first time bidders.

Signature _____

PLEASE PRINT CLEARLY IN BLOCK LETTERS

[illegible]

Salisbury Salerooms, 51-61 Castle Street, Salisbury, Wiltshire SP1 3SU • Tel: 01722 424500 Fax: 01722 424508

www.woolleyandwallis.co.uk

Auction Calendar

ENGLISH & EUROPEAN CERAMICS & GLASS

28th February 2017 – Fine Porcelain & Pottery

23rd May 2017 – English & European Ceramics & Glass

Clare Durham +44 (0) 1722 424507 • cd@woolleyandwallis.co.uk

TRIBAL ART & ANTIQUITIES

1st March 2017

Will Hobbs +44 (0) 1722 339752 • wh@woolleyandwallis.co.uk

PAINTINGS

15th March 2017 – Old Masters, British & European Paintings

7th June 2017 – Modern British & 20th Century Art

Victor Fauvelle +44 (0) 1722 424503 • vf@woolleyandwallis.co.uk

Jo Butler +44 (0) 1722 424592 • jb@woolleyandwallis.co.uk

20TH CENTURY DESIGN

29th March 2017 – Clarice Cliff, Art Deco & Design

21st June 2017 – Arts & Crafts

22nd June 2017 – A Private Collection of Burmantofts Pottery

Michael Jeffery +44 (0) 1722 424505 • mj@woolleyandwallis.co.uk

ARMS & ARMOUR, MEDALS & COINS AND MILITARIA

28th March 2017

Ned Cowell +44 (0) 1722 341469 • nc@woolleyandwallis.co.uk

FURNITURE, WORKS OF ART & CLOCKS

12th April 2017

Mark Richards +44 (0) 1722 411854 • mr@woolleyandwallis.co.uk

SILVER

25th & 26th April 2017 – Fine Silver & Vertu

Including The Arthur Holder Collection Part III

Rupert Slingsby +44 (0) 1722 424501 • rs@woolleyandwallis.co.uk

Lucy Chalmers +44 (0) 1722 424594 • lc@woolleyandwallis.co.uk

JEWELLERY

27th April 2017 – Fine Jewellery

Jonathan Edwards +44 (0) 1722 424504 • je@woolleyandwallis.co.uk

Marielle Whiting +44 (0) 1722 424595 • mw@woolleyandwallis.co.uk

ASIAN ART

16 & 17th May 2017

John Axford +44 (0) 1722 424506 • jea@woolleyandwallis.co.uk



www.woolleyandwallis.co.uk