



NEPAL, RAI

1 Mask

wood, brown, black and white paint, pierced eyes, slit mouth, circular emblem on the forehead, thick encrusted paint, slightly dam.

H: 21,5 cm

Provenience: Paul Rutten, Amsterdam, The Netherlands

Vera und Wolfgang Nerlich, Munich, Germany

Start bid: 200 €, estimate: 800 €



SUDAN, BONGO

2 Memorial figure "ngya"

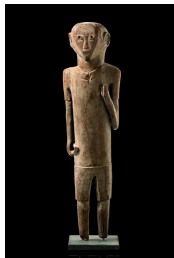
wood, light brown patina, carved with a peaked cap, shorts indicated, a head with triangular facial plane without neck rising from broad shoulders, dam., missing parts (both foot tips, right shoulder), cracks, base; these statues represent the departed and serve as a monument for the living, but also scare off witches through their striking human features. Since each Bongo man could gain prestige by successfully hunting large animals and killing enemies in battle, his relatives would honour him a year after his death by erecting these "ngya" figures on his graveside and holding a feast. Apart from the effigy of the deceased, the relatives would also add large notched posts that recorded the number of the deceased's successful kills - human and animal - and sometimes effigies of his victims.

H: 56 cm

Provenience: Peter Loebarth, Hameln, Germany

Vera und Wolfgang Nerlich, Munich, Germany

Start bid: 650 €, estimate: 4.000 €



SUDAN, BONGO

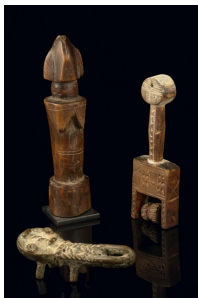
3 Tomb figure

heavy wood, greyish brown patina, an overlength cylindrical trunk rising from thin stump legs, a massive neck supporting a head extremely projecting to the back, showing a small, triangular flattened facial plane, dam., missing parts (left hand, both feet), traces of insect caused damage (cavity on top of the head), cracks and abrasion (weathering), metal plate

H: 47 cm

Provenience: Vera und Wolfgang Nerlich, Munich, Germany

Start bid: 650 €, estimate: 2.500 €



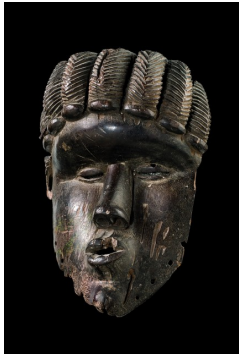
WEST AFRICA

4 Three objects

a heddle pulley of the Baule, Ivory Coast, remains of kaolin, abstracted forms, carved with ornaments, complete with bobbin, collection number "R18", slight traces of abrasion, h: 16 cm; a fertility doll "biiga" of the Mossi, Burkina Faso, wood, brown patina, cylindrical arm- and legless trunk with accentuated breasts, min. dam., cracks, slight traces of abrasion, h: 19,5 cm; a ritual object "ofa" of the Igbo, Nigeria, metal, decorated with grooves and spirals, crowned by a stylized human head, four small feet on the back, min. dam., slight traces of corrosion, h: 11,5 cm

Provenience: Vera und Wolfgang Nerlich, Munich, Germany

Start bid: 150 €, estimate: 800 €



LIBERIA, BASSA

5 Mask "geh naw"

wood, partly shiny dark brown patina, hollowed facial plane, the eye zone horizontal deepened, elaborate coiffure consisting of seven voluminous lobes, pierced around the rim, dam., missing parts through insect caused damage, base; the mask type "geh-naw" belongs to a secret society called "chu-den-zo". It used to entertain the audience when the initiated boys returned from the bush camp or when distinguished guests came to visit the village. The dancer wore the mask on the forehead, looking through a gap within the cloth, veiling his head and the upper part of his body.

H: 20 cm

Provenience: Helmut Zake, Heidelberg, Germany
Vera und Wolfgang Nerlich, Munich, Germany

Start bid: 1.200 €, estimate: 5.000 €



MALI, BAMANA

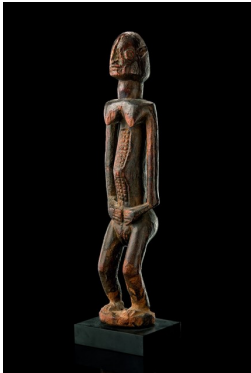
6 Hyaena mask "suruku" of the "korè" society

wood, dark brown patina, pierced eyes, projections on forehead and nose, stylized ears, notched tattoos, slightly dam., minor missing parts; the masks were looked upon as bearers of energy, and already during their making they received blood sacrifices. During the performance the dancers took a crooked posture, leaning on short sticks, which optical lengthens their arms and imitates the bearing of the hyaena. The meaning of the hyaena mask differs according to the respective context of its appearance. Within the scope of the "koré" celebration the hyaena in most cases symbolizes the effort of the initiate to perfect their secret knowledge.

H: 30 cm

Provenience: Inge Hett, Berlin, Germany
Vera und Wolfgang Nerlich, Munich, Germany

Start bid: 350 €, estimate: 3.000 €



MALI, DOGON

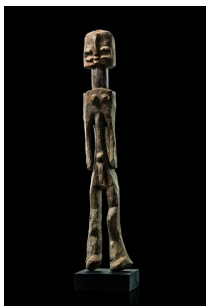
7 Standing female figure

wood, reddish brown patina with traces of black paint, encrusted in some areas, the body arranged in geometrical forms, helmet-shaped head with the typical arrow-shaped nose, min. dam. (breasts), crack (head backside and back), missing parts (base), the surface showing traces of weathering and insect caused damage, above all at the leg zone, base; the bulging abdomen and the protective gesture of the hands refer to the depiction of a pregnant woman. According to G. Dieterlen figures with such a posture were used on altars intended for rituals dedicated to the souls of women who have died during pregnancy or childbirth. Among the Dogon, such a woman is never buried in the cemetery of her lineage, nor is a funerary pot ever placed in the family sanctuary for her. Her soul is banished and left to wander. However, a cult is established for her by a powerful healer, who is responsible for the altar mentioned above.

H: 44,5 cm

Provenience: Ludwig Bretschneider, Munich, Germany (1983)
Vera und Wolfgang Nerlich, Munich, Germany

Start bid: 1.500 €, estimate: 7.000 €



MALI, DOGON

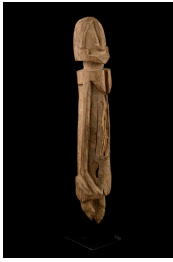
8 Hermaphrodite

wood, greyish brown patina, encrusted in some areas, a high towering slender body rising from bulky feet, crowned by a cylindrical head with raised C-shaped eyes, slightly dam., minor missing parts, base; present figure might represent a "dege dal nda", a so-called "sculpture of the terrace", or a figure called "vageu", which was displayed on a family altar.

H: 85 cm

Provenience: Alfons Bermel, Berlin, Germany
Vera und Wolfgang Nerlich, Munich, Germany

Start bid: 800 €, estimate: 3.000 €



MALI, DOGON

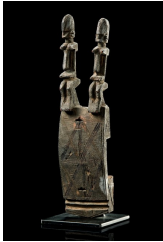
9 Standing figure

light brown wood, mat patina, fragmentary legs carrying an elongated trunk, flanked by long arms worked close to the body, crowned by an almost neckless head with tribe-typical facial features, collection number "H8" on the back, min. dam., missing parts (legs), cracks, metal base

H: 38 cm

Provenience: Vera und Wolfgang Nerlich, Munich, Germany

Start bid: 350 €, estimate: 2.000 €



MALI, DOGON

10 Door lock

wood, dark brown, slightly encrusted patina, carved with notched and linear incised ornaments, crowned by a sitting pair of figures with tribe-typical facial features, bolt missing, min. dam., slight traces of abrasion, metal base

H: 29 cm

Provenience: Vera und Wolfgang Nerlich, Munich, Germany

Start bid: 350 €, estimate: 2.000 €



BURKINA FASO, BOBO

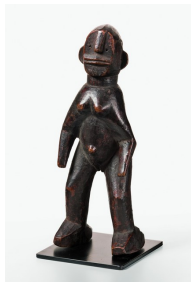
11 Zoomorphic mask "wan nyaka"

wood, polychrome paint, mat patina, vaulted calotte with raised forehead ridge, surmounted by long horns, completely painted with coloured ornaments, pierced around the rim, min. dam., signs of abrasion, metal base; the masks of the Bobo have totemistic character, they are part of the genesis myths of the clan they belong to. "Wan nyaka" means "little antelope" and appeared at funerals and circumcision festivities.

H: 20 cm

Provenience: Vera und Wolfgang Nerlich, Munich, Germany

Start bid: 250 €, estimate: 1.500 €



BURKINA FASO, BOBO

12 Standing female figure

wood, blackish brown patina, high-legged figure with slanting shoulders, the facial plane marked by a broad mouth, slightly dam., paint rubbed off, missing part (at the back of the left heel), metal plate;

the most important artistic works of the Bobo are their masks, figural objects are quite rare.

H: 26 cm

Provenience: Leopold Häfliger, Luzern, Switzerland

Vera und Wolfgang Nerlich, Munich, Germany

Start bid: 400 €, estimate: 2.000 €



BURKINA FASO, GURUNSI

13 Pair of figures

wood, reddish brown patina, a male and a female figure, their schematized bodies positioned headon, with the tube-like curved limbs symmetrical arranged, the respective gender accentuated, drilled holes in arm and abdomen of the male figure, slightly dam., minor missing parts (head of the male, coiffure of the female figure), cracks, on metal plate; in contrast to the masks, which were performed in public, the figural objects of the Gurunsi were strictly kept hidden. They are exclusively used for sooth-saying and were kept in special shrines for the rest of the time.

H: 38 cm

Provenience: Klaus-Jochen Krüger, Hamburg, Germany (1984)

Vera und Wolfgang Nerlich, Munich, Germany

Start bid: 1.200 €, estimate: 4.000 €



BURKINA FASO, LOBI

14 Male figure "bateba phuwe"

wood, spotty brown patina, torso with circular incisions, surmounted by an oval head with slanting eyes and a sharp-ridged nose, min. dam., slight traces of abrasion, metal base

H: 22,5 cm

Provenience: Joseph Christiaens, Brussels, Belgium

Vera und Wolfgang Nerlich, Munich, Germany

Start bid: 200 €, estimate: 1.800 €



BURKINA FASO, LOBI

15 Two male figures "bateba phuwe"

wood, brown patina, a) slightly encrusted patina, remains of kaolin, remarkable carved eyes, min. dam., metal socle, h: 20,5 cm; b) slightly shiny brown patina, min. dam., slight traces of abrasion, h: 20 cm

Provenience: Vera und Wolfgang Nerlich, Munich, Germany

Start bid: 150 €, estimate: 800 €



BURKINA FASO, LOBI

16 Small standing figure

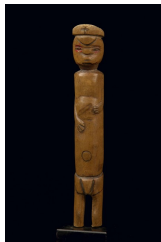
wood, matt patina, remains of black paint, the hands resting on the chest, crowned by a narrow head with the eyes arranged lateral, min. dam., fine cracks, base

H: 11,5 cm

Provenience: Peter Loebarth, Hameln, Germany

Wolfgang Nerlich, Munich, Germany

Start bid: 60 €, estimate: 500 €



BURKINA FASO, LOBI

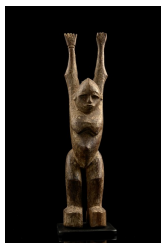
17 Small colon figure

light brown wood, red paint remains, wearing uniform and matching headgear, carved with a face in half relief on the back, min. dam., slight traces of abrasion, metal plate

H: 16 cm

Provenience: Vera und Wolfgang Nerlich, Munich, Germany

Start bid: 60 €, estimate: 900 €



BURKINA FASO, LOBI

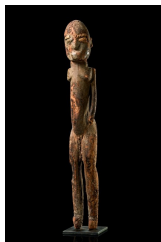
18 Female figure "bateba ti puo"

wood, spotty, greyish brown patina, rising from slightly bent legs with big feet, a bulky torso supporting an almost neckless head, upraised arms, min. dam., traces of insect caused damage and abrasion, metal base

H: 25,5 cm

Provenience: Vera und Wolfgang Nerlich, Munich, Germany

Start bid: 150 €, estimate: 1.500 €



BURKINA FASO, LOBI

19 Standing figure "bateba phuwe"

wood, encrusted, mat patina, sacrificial traces, high-legged, angular shoulders and free worked arms, dam., missing parts because of insect caused damage, right arm missing, cracks, signs of abrasion, metal base

H: 83 cm

Provenience: Vera und Wolfgang Nerlich, Munich, Germany

Start bid: 600 €, estimate: 4.000 €



BURKINA FASO, MOSSI

20 Mask "wan balinga"

wood, remains of polychrome paint, animal hair, vaulted calotte with human facial features, crowned by a rooster's comb, entirely coated with ornaments, pierced around the rim, min. dam., traces of abrasion, base

H: 20 cm

Provenience: Wolfgang Nerlich, Munich, Germany

Start bid: 500 €, estimate: 3.000 €



BURKINA FASO, MOSSI

21 Standing male figure

heavy wood, reddish brown patina, traces of black paint, a long-legged slender body with sloping shoulders and overlength arms, dam., rep. (left arm), the left hand missing, as well as a part of the right hand, minor missing parts (neck, head, left heel), base; big figures could replace the body of a deceased chief at funeral ceremonies. Smaller anthropomorphic figures are used in honour of village chiefs.

H: 51,5 cm

Provenience: Inge Hett, Berlin, Germany

Vera und Wolfgang Nerlich, Munich, Germany

Start bid: 650 €, estimate: 2.000 €



BURKINA FASO, MOSSI

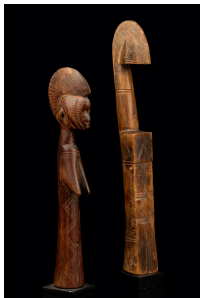
22 Fertility doll "biiga"

wood, brown patina, poker-work, cylindrical body with breasts and linear incised ornaments, abstract head, slightly dam. (mouth)

H: 15 cm

Provenience: Wolfgang Nerlich, Munich, Germany

Start bid: 30 €, estimate: 200 €



BURKINA FASO, MOSSI

23 Two fertility dolls "biiga"

wood, brown patina, a) dark brown patina, armless torso with incised decorations, drilled navel, earholes and high forehead crest, h: 28 cm; c) abstracted body without recognizable facial features, h: 33,5 cm; both showing min. missing parts and slight traces of abrasion, bases; girls as well as boys used to take care for such dolls, in order to be prepared for their later role as parents.

Provenience: c) Neumeister München, 11. November 2012, lot 126

Vera und Wolfgang Nerlich, Munich, Germany

Start bid: 150 €, estimate: 1.600 €



CÔTE D'IVOIRE, BAULE

24 Face mask of the "mblo" - group

light-weighted wood, remains of matt blackish brown patina, the coiffure arranged in three concentric half circles in flat relief, completed by flat bow-shaped braids on both sides, the actual facial plane concentrated on a rather small area in the lower third, summarised by a fine toothed rim, the regular facial features with lowered lids achieving an even self-contained expression, the surface structure marked by abrasion of paint and insect caused damage, cracks (partly spread with mass), minor missing parts (mouth, eyes, right ear), beard under chin lost, traces of insect caused damage backside, base; masks like the present represent recognized, named individuals. The men and women portrayed in masks are known for their great skill as dancers, for their exceptional beauty, or because they are important political figures. They represent an ideal in Baule culture typified by this mask. Physical beauty for the Baule and many Africans is almost always equated with the embellishment and natural endowments. The downcast eyes and closed lips imply respect and composure, two moral qualities that the Baule esteem greatly.

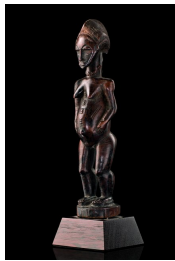
H: 28 cm

Provenience: Hermann Sommerhage, Duisburg, Germany

Alfons Bermel, Berlin, Germany

Vera und Wolfgang Nerlich, Munich, Germany

Start bid: 1.800 €, estimate: 6.000 €



CÔTE D'IVOIRE, BAULE

25 Standing female figure "blolo bla"

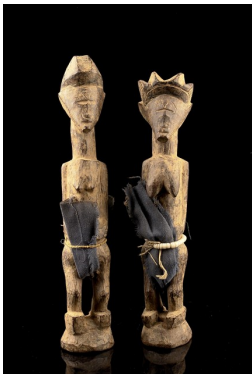
wood, shiny brown patina, remains of black paint, the hands resting on the bulging abdomen, tribe-typical scarification marks, min. dam., fissures, slight traces of abrasion, base

H: 30 cm

Provenience: Alfons Bermel, Berlin, Germany

Wolfgang Nerlich, Munich, Germany

Start bid: 800 €, estimate: 4.000 €



CÔTE D'IVOIRE, BAULE

26 Pair of figures "bo osu"

wood, dark brown patina, encrusted with clay, crude carved figures with cylindrical bodies and indicated arms, the facial features incised, massive coiffures, fabric loincloth, slightly dam.;

the "bo osu" represent bush spirits and were always carved in pairs. They are placed in shelters near a path or on top of termite hills. This placement is intended to provoke the spirit to stay out of the village and help with the hunt. "Bo osu" go around with bush animals and help their human partners to shoot and trap small game. They are personal figures for hunting.

H: 29,5 cm (female); 31,5 cm (male)

Provenience: Inge Hett, Berlin, Germany

Vera und Wolfgang Nerlich, Munich, Germany

Start bid: 300 €, estimate: 1.800 €



CÔTE D'IVOIRE, BAULE

27 Heddle pulley

wood, shiny, dark brown patina, u-shaped corpus, crowned by a human head, parallel scarification marks in the forehead area, elaborate grooved coiffure, bobbin missing, min. dam., fissures, small missing parts, base

H: 15,5 cm

Provenience: Adrian Schlag, Brussels, Belgium

Vera und Wolfgang Nerlich, Munich, Germany

Start bid: 250 €, estimate: 2.000 €



CÔTE D'IVOIRE, BAULE

28 Three heddle pulleys

group of three, wood, dark brown patina, horseshoe-shaped corpus with anthropomorphic head, bobbin missing, h: 14,5 cm; heddle pulley with buffalo head, slight traces of usage, h: 17,5 cm, on metal base; additional: a heddle pulley of the Senufo, Ivory Coast, crowned by a Kalao bird's head, complete with bobbin, min. dam., slight traces of abrasion, h: 17,5 cm, on wooden base;

heddle pulleys belong to the weavers and were passed on as appreciated heirloom within the family. Because of their private character, the weaver is allowed to define their form on his own.

Provenience: Galerie Inge Hett, Berlin, Germany

Wolfgang Nerlich, Munich, Germany

Start bid: 150 €, estimate: 1.500 €



CÔTE D'IVOIRE, BETE

29 Mask

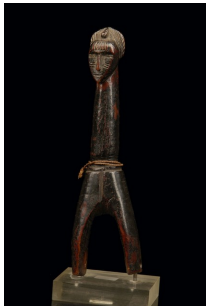
wood, encrusted brown patina, the facial plane arranged in horizontal levels, decorated with metal tags, pierced around the rim, min. dam., traces of insect caused damage, traces of abrasion

H: 23 cm

Provenience: Inge Hett, Berlin, Germany

Vera und Wolfgang Nerlich, Munich, Germany

Start bid: 700 €, estimate: 4.000 €



CÔTE D'IVOIRE, BETE

30 Heddle pulley

wood, shiny blackish brown patina, a long neck supporting a head with tribe-typical facial features, bobbin missing, min. dam., slight traces of abrasion; the weaver who uses traditional methods employs so-called heddle pulleys to guide his cotton thread. They are decorated with motifs taken from the ancestral cult or tribal symbols. However, heddle pulleys do not embody ritual meanings.

H: 20 cm

Provenience: Inge Hett, Berlin, Germany

Vera und Wolfgang Nerlich, Munich, Germany

Start bid: 150 €, estimate: 900 €



CÔTE D'IVOIRE, DAN

31 Mask "kagle"

wood, middle brown, partly encrusted patina, of oval form, marked by a roof-like protruding forehead and half-circular vaulted cheeks, beard of wool threads, pierced around the rim, min. dam., slight traces of abrasion;

the "kagle" mask figure used to wear a wig of cotton threads and a puffed raffia fiber skirt.

Important requisites were bundles of hooked branches, used to annoy the audience.

According to the hooked branch "ka" the mask figure is called "kagle".

H: 24 cm

Provenience: Inge Hett, Berlin, Germany

Vera und Wolfgang Nerlich, Munich, Germany

Start bid: 400 €, estimate: 2.000 €



CÔTE D'IVOIRE, DAN

32 Miniature mask "ma go"

wood, partly encrusted black patina, protruding tube-shaped eyes, partly stud with metal sheet, four metal teeth, a beard made from cloth fringes underneath, min. dam., cracks, slight traces of abrasion;

the Dan have miniature versions of nearly every mask type. These miniature masks are called "ma go ", which means "small head". On travels they act as a substitute for the big masks in representing the helping spirit.

H: 13 cm

Provenience: Peter Loebarth, Hameln, Germany
Vera und Wolfgang Nerlich, Munich, Germany

Start bid: 150 €, estimate: 1.500 €



CÔTE D'IVOIRE, DAN

33 Mask "ma go"

wood, partly shiny, dark brown patina, of oval form with a raised forehead ridge, pierced eyes and a protruding rhomb-shaped mouth, pierced around the rim, traces of insect caused damage

H: 17 cm

Provenience: German Collection
Vera und Wolfgang Nerlich, Munich, Germany

Start bid: 150 €, estimate: 1.000 €



CÔTE D'IVOIRE, DAN

34 Spoon "wa ke mia"

light brown wood, dark brown patina, handle in form of a human head, min. dam., slight traces of usage;

part of the belongings of a "wunkirle", a married highly esteemed woman of the village. The big spoons are signs of dignity, they were exclusively used for the ritual carrying of rice. The "wunkirle" had to prepare meals for feasts in the circumcision camps as well as on great days and for every visitor of the village. In order to meet this demand she needs a helping spirit, which is manifested in the big spoon "wa ke mia".

H: 48 cm

Provenience: Vera und Wolfgang Nerlich, Munich, Germany

Start bid: 200 €, estimate: 1.000 €



CÔTE D'IVOIRE, EBRIÉ

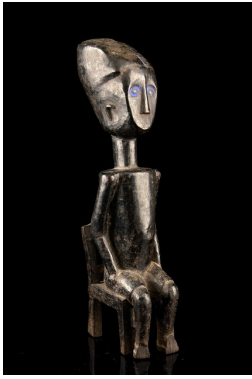
35 Standing female figure

middle brown wood, dark brown patina, strings of white miniature glass beads, the neck carved with rings, simplified facial features, min. dam., slight traces of abrasion, base

H: 18 cm

Provenience: Haberzettl, Munich, Germany
Vera und Wolfgang Nerlich, Munich, Germany

Start bid: 200 €, estimate: 900 €



CÔTE D'IVOIRE, KULANGO

36 Seated figure

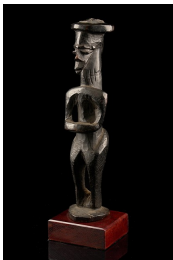
wood, black patina, encrusted in some areas, with symmetrical arranged limbs sitting on a stool, a columnar neck supporting a narrow head with flattened facial plane and a voluminous projecting coiffure, eyes and side-parting accentuated by indigo blue paint, slightly dam., cracks, missing parts (both foot tips), paint rubbed off; the small ethnical group of the Kulango belongs to the Volta peoples, living on the northeastern Ivory coast, south of the Lobi, east of the Jimini and north of the Agni and Abron. Their geographical position is reflected in their works of art, which mainly reveal Akan influences, as is the case with present figure. Characteristic for the Kulango is the accentuation of the mostly blackened objects with white or blue paint.

H: 36 cm

Provenience: Inge Hett, Berlin, Germany

Vera und Wolfgang Nerlich, Munich, Germany

Start bid: 600 €, estimate: 3.500 €



CÔTE D'IVOIRE, KULANGO

37 Small figure

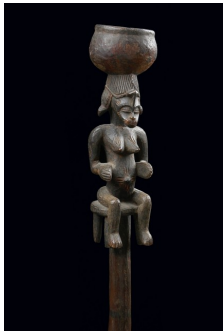
wood, shiny, blackish brown patina, the hands resting in front of the chest, the arms forming a square-like frame, a long columnar neck with scarification marks supporting an oval head with pointed chin, min. dam., missing parts through insect caused damage, base

H: 22,5 cm

Provenience: German Private Collection

Vera und Wolfgang Nerlich, Munich, Germany

Start bid: 200 €, estimate: 1.500 €



CÔTE D'IVOIRE, SENUFO

38 Figural carved staff "tefalapica"

wood, brown patina, remains of black paint, round staff, carved with a sitting female figure, carrying a bulbous vessel on her head, min. dam., fine cracks, slight traces of abrasion; "tefalapica" means "the girl of the man working with the hoe" and presents the trophy money in a kind of hoeing competition. In September and October the young men of the Senufo have to cultivate the new yams fields, an exhausting field work, organized as a kind of competition.

H: 125,5 cm

Provenience: Peter Loebarth, Hameln, Germany (1993)

Vera und Wolfgang Nerlich, Munich, Germany

Start bid: 400 €, estimate: 2.000 €



CÔTE D'IVOIRE, SENUFO

39 Standing pair of figures "tugubele"

wood, blackish brown patina, sacrificial traces, a male and a female figure, their bodies nearly identical in shape and posture, the female adorned with a string of cowrie snails, the male one with a cape, min. dam., slight traces of abrasion; such small human figures belong to single persons, mainly soothsayers. They are indispensable for getting into contact with the "tugubele", the small invisible and omnipresent bush spirits. The "tugubele" promise to help their human partners, when they are appreciated accordingly, which means that a figure has to be carved, representing them. Just like the bush spirits such figures are called "tugubele".

H: 16,5 cm resp. 20, 5 cm

Provenience: Henseler, Munich, Germany

Vera und Wolfgang Nerlich, Munich, Germany

Start bid: 350 €, estimate: 1.800 €



CÔTE D'IVOIRE, SENUFO

40 Standing male figure "tugubele"

wood, partly encrusted dark brown patina, free carved arms presenting the palms of the hands, a narrow head with crested coiffure, min. dam., cracks, slight traces of abrasion, socle

H: 26,5 cm

Provenience: Vittelshuis, Delft, The Netherlands

Wolfgang Nerlich, Munich, Germany

Start bid: 800 €, estimate: 4.000 €



CÔTE D'IVOIRE, SENUFO

41 Three heddle pulleys

wood, partly shiny, dark brown patina, each of them with horseshoe-shaped corpus, crowned by the head of a Kalao bird, h: 15 cm, resp. a "kpelie" mask, h: 20 cm; additional: a heddle pulley of the Jimini, Ivory Coast, crowned by an antelope's head with long horns, h: 18 cm, all bobbins missing, slight traces of abrasion, base

Provenience: Wolfgang Nerlich, Munich, Germany

Start bid: 200 €, estimate: 1.500 €



CÔTE D'IVOIRE, SENUFO

42 Ring with buffalo head

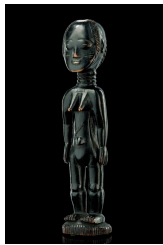
brass, ornamented face surmounted by a little bird, big pair of horns, min. dam., slight traces of abrasion;

this "nyi-kar-yi" was even called "ring of silence". Members of a healing society used to hold it between the teeth, when one of them was buried.

H: 10,5 cm

Provenience: Vera und Wolfgang Nerlich, Munich, Germany

Start bid: 150 €, estimate: 1.000 €



GHANA, ABRON

43 Standing female figure

wood, shiny blackish patina, showing a static posture with hanging arms, the flat face with incised scarification marks, the coiffure arranged in four flat lobes emerging from an angular point on top, slightly dam., paint rubbed off (nose, chin, breast, base)

H: 31,5 cm

Provenience: Vera und Wolfgang Nerlich, Munich, Germany

Start bid: 450 €, estimate: 3.000 €



GHANA, AKAN

44 Two head sculptures

terracotta, a) memorial head with broad forehead and diadem-shaped coiffure, the raised bean-shaped eyes seem to be closed, the curved brows grown together at the root of the nose, h: 12, 5 cm, dam.; b) memorial head with ringed neck, with a flattened slanting facial plane and abstract facial features, h: 10,5 cm, slightly dam., wooden bases; memorial heads of the Akan were not thought as individual portraits, they just showed singularities of the deceased, just like coiffure, skin scarification marks or ornaments, which made him recognizable for his relatives.

Provenience: a) Neumeister Munich, 11. November 2010, lot 148

Vera und Wolfgang Nerlich, Munich, Germany

Start bid: 150 €, estimate: 1.000 €



GHANA, ASHANTI

45 Pair of ancestor figures

wood, brown patina, black paint, a standing male and female figure depicted in seated posture, both arranged frontal, long necks, carved with rings, supporting proportionally big heads, the females coiffure arranged in fanciful horn-like lobes, while the male ones is simple and flat with side parting, painted scarification marks, slightly dam., cracks, minor missing parts because of insect caused damage, paint rubbed off, on plates; the Ashanti are the most popular group among the Akan. Present pair of ancestor figures probably was installed on a magical shrine, as the pierced bases of both figures imply.

H: 63 cm (male), 58 cm (female)

Provenience: Vera und Wolfgang Nerlich, Munich, Germany

Start bid: 850 €, estimate: 3.500 €



GHANA, ASHANTI

46 Top of a spokesman staff "okyeame poma"

light brown wood, bowl-shaped base with four thorn-like projections, terminating in a human head on ringed neck, laced with small holes, presumably once coated with gold foil, slightly dam., crack (back of the bowl-shaped base); such staffs, visualizations of proverbs, became important regalia of the "okyeame".

H: 34 cm

Provenience: Lempertz, Brussels, 26. April 2008, lot 109

Vera und Wolfgang Nerlich, Munich, Germany

Start bid: 200 €, estimate: 1.500 €



GHANA, ASHANTI

47 Two statuettes

wood, a) figure with ringed neck, fly whisk or hoe across the left shoulder, black encrusted patina, h: 15 cm, slightly dam. (nose, mouth, foot tips), metal plate; b) standing figure, at the back of the head carved with a mask of the "bonu amwin" type, painted in blue and red, h: 11,8 cm, slightly dam., base; "bonu amwin" means "god of the woods". This mask of high authority belongs to the "do" secret society. This mask was greatly feared, it was a powerful force for averting harm and maintaining order in the community.

Provenience: b) Inge Hett, Berlin, Germany

Vera und Wolfgang Nerlich, Munich, Germany

Start bid: 100 €, estimate: 900 €



GHANA, ASHANTI

48 Two miniature sculptures

brass, aged patina, a) equestrian figure with raised sword, h: 6,3 cm, base; b) stylized bird (ibis ?) on plate together with three chicks (one of them without head and with broken leg), Baule, Ivory Coast, h: 6,3 cm

Provenience: a) Franz Burkhard, Karlsruhe, Germany

Vera und Wolfgang Nerlich, Munich, Germany

Start bid: 100 €, estimate: 800 €



GHANA, EWE

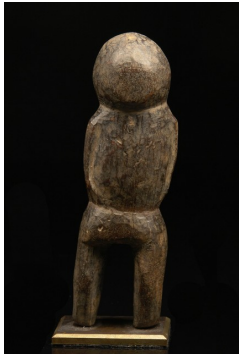
49 Twin figure "venavi"

wood, shiny, brown patina, strings of glass beads, min. dam., small missing parts, base; alike the "ibeji" figures of the Yoruba, the "venavi" figures were carved for deceased twins or triplets. They serve as abode for the spirit of the deceased. The Ewe women used to care for them, they were fed, washed and caressed. For the Ewe venerate twins and regard them as a connecting link to the otherworld.

H: 14,5 cm

Provenience: Vera und Wolfgang Nerlich, Munich, Germany

Start bid: 60 €, estimate: 800 €



TOGO, MOBA

50 Small standing figure "yendu tchitchiri"

wood, partly shiny brown patina, of abstract form without recognizable facial features, min. dam., cracks, slight traces of abrasion, base; according to size and usage the sculptures of the Moba can be divided in three groups: the smaller figures, displayed on altars are called "yendu tchitchiri" and have protective function for personal use; the sculptures of medium are called "bavong tchitchiri". The big sculptures finally, represent the clan founder "sakap", they are called "sakap tchitchiri" and protect the whole village.

H: 17,5 cm

Provenience: Inge Hett, Berlin, Germany
Wolfgang Nerlich, Munich, Germany

Start bid: 50 €, estimate: 800 €



BENIN, FON

51 Figure "bla-bochio"

wood, thick encrusted brown patina, block-like body, rising from a round base, wearing a cape of fabric, exuberant hangings with metal chains and a flute, crowned by a round head with big eyes, strong sacrificial traces, min. dam., missing parts (right foot, base), metal plate;

"bla-bochios" are captivated figures and were used in various situations. They help to defy captivity, like e. g. slavery in former times, or prevent diseases nowadays. Furtheron they enable to commit persons to oneself, e. g. two lovers.

H: 48,5 cm

Provenience: Vera und Wolfgang Nerlich, Munich, Germany

Start bid: 350 €, estimate: 1.500 €



NIGERIA, BINI

52 Mask

wood, kaolin, polychrome paint, cowrie snails, of oval form, a deepened facial plane with protruding mouth and singular carved teeth, crowned by a conical headgear and two projections aside, pierced around the rim, small missing parts, slight traces of abrasion, base;

these masks are danced by members of the "Ekpo" society, who take care for the well-being of the village and settle disputes.

H: 36 cm

Provenience: Klinkmüller, Berlin, Germany
Inge Hett, Berlin, Germany
Lore Kegel, Hamburg, Germany
Vera und Wolfgang Nerlich, Munich, Germany

Start bid: 450 €, estimate: 3.000 €



NIGERIA, BINI

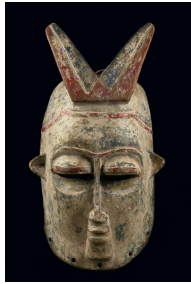
53 Mask

wood, encrusted patina, kaolin, remains of paint, of oval form, a deepened facial plane with high forehead and tribe-typical facial features, crowned by a high tapering headgear with inserted mirror glass, pierced around the rim, min. dam., cracks, slight traces of abrasion, metal base

H: 27 cm

Provenience: Vera und Wolfgang Nerlich, Munich, Germany

Start bid: 300 €, estimate: 2.000 €



NIGERIA, BINI

54 Zoomorphic mask "azigho"

wood, polychrome paint, of oval form with a high forehead and v-shaped horns, brows in double arches, pierced eyes, drilled holes around the rim, min. dam., slight traces of abrasion, small missing parts backside;
this animal mask with human features depicts an antelope.

H: 38,5 cm

Provenience: Alfons Bermel, Berlin, Germany
Vera und Wolfgang Nerlich, Munich, Germany

Start bid: 300 €, estimate: 1.600 €



NIGERIA, BINI

55 Zoomorphic mask "azigho"

wood, mat patina, kaolin, red and black pigment remains, of oval form with a high forehead and v-shaped horns, brows in double arches, pierced eyes, scarification marks on the cheeks, pierced around the rim, min. dam., slight signs of abrasion, small missing parts, metal base;
this animal mask with human features is depicting an antelope.

H: 30 cm

Provenience: Vera und Wolfgang Nerlich, Munich, Germany

Start bid: 250 €, estimate: 1.500 €



NIGERIA, EJAGHAM

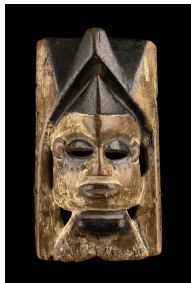
56 Anthropomorphic head crest

wood, dark brown patina, a conical shaped neck, supporting a narrow head with European features, the lids lowered, the mouth with beautiful curved lips revealing a row of teeth with notched incisors, a crown-shaped crest with a tuft of animal hair on top, slightly damaged. (nose, ears, crown), cracks, missing parts (crown and head backside), traces of insect caused damage (neck), paint rubbed off

H: 37 cm

Provenience: Vera und Wolfgang Nerlich, Munich, Germany

Start bid: 500 €, estimate: 1.800 €



NIGERIA, EKET

57 Miniature mask

light-weighted wood, middle brown patina, black paint, kaolin, a small mask face with slanted face halves, rising to a raised vertical middle ridge, fit into a rectangular frame, slightly damaged, paint rubbed off, traces of insect caused damage (at the lower rim and backside), drilled holes around the rim broken in parts

H: 17,5 cm

Provenience: Manfred Schäfer, Ulm, Germany
Vera und Wolfgang Nerlich, Munich, Germany

Start bid: 800 €, estimate: 3.000 €



NIGERIA, EKET

58 Miniature mask

light coloured wood, remains of black and red paint, oval hollowed mask face with a board-shaped flattened framing, sickle-shaped pierced eyes, various drilled holes, slightly damaged, minor missing parts, paint rubbed off;
these masks were used by the "ekpo"-society during the planting and harvesting of yams.

H: 13,5 cm

Provenience: Werner Fischer, Gelsenkirchen, Germany
Vera und Wolfgang Nerlich, Munich, Germany

Start bid: 400 €, estimate: 1.200 €



IBIBIO/EKET, NIGERIA

59 Mask

wood, mat patina, kaolin, remains of paint, disc-shaped base, carved with a mask face, showing almond-shaped eyes and a small "snub nose", pierced around the rim, min. dam., small missing parts, slight traces of abrasion; this mask shows elements of both the Ibibio and the Eket and probably derives from the border area of both ethnic groups.

H: 18 cm

Provenience: Inge Hett, Berlin, Germany

Vera und Wolfgang Nerlich, Munich, Germany

Start bid: 350 €, estimate: 2.000 €



NIGERIA, EKET

60 Mask

wood, slightly encrusted patina, remains of pigments, of round form, sickle-shaped pierced eyes, pierced around the rim, min. dam., traces of insect caused damage, slight traces of abrasion;

the Eket are a small ethnic group belonging to the Ibibio and settling in about 45 villages. Salmons and Nicklin take the formal and ornamental elements as lunar signs, especially because the Eket are used to this imagery, which is expressed by the connection of their female deity or "Big Mother" ("eka abbassi") to the moon.

H: 19,5 cm

Provenience: German Private Collection

Vera und Wolfgang Nerlich, Munich, Germany

Start bid: 250 €, estimate: 1.400 €



NIGERIA, EKET

61 Mask

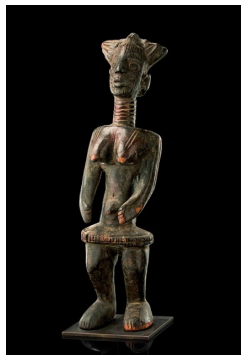
wood, remains of polychrome paint, a vaulted oval fond carved with a protruding mask face, framed by radial arranged projections, pierced around the rim, min. dam., missing parts, cracks, traces of abrasion

H: 19 cm

Provenience: Manfred Schäfer, Ulm, Germany

Vera und Wolfgang Nerlich, Munich, Germany

Start bid: 600 €, estimate: 1.200 €



NIGERIA, GOEMAI

62 Standing female figure

wood, red and blackish brown patina, scarification marks aside the mouth, slightly dam., minor missing parts (breasts, left arm and hand, lobes, skirt), paint rubbed off, metal plate; carved figures mostly appear in connection with the mens society "kwompten", whose activities are kept strictly confidential from non-initiates and women. Obviously they were used for healing rites, at which the figures task is to find out the cause of the illness. In return the convalescent has to arrange a feast for the village community and has to sacrifice a goat and millet.

H: 43 cm

Provenience: Manfred Schäfer, Ulm, Germany

Vera und Wolfgang Nerlich, Munich, Germany

Start bid: 650 €, estimate: 3.000 €



NIGERIA, IBIBIO

63 Mask with hinged jaw "idiok ekpo"

wood, blackish brown, partly encrusted patina, a bulging forehead, tube-shaped projections on the temples, beak-like mouth with hinged jaw, pierced around the rim, dam., insect caused damage, missing pieces; belonging to the "idiok" masks, the so-called "ugly ghost" masks, representing straying spirits.

H: 26 cm

Provenience: Vera und Wolfgang Nerlich, Munich, Germany

Start bid: 450 €, estimate: 2.000 €



NIGERIA, IDOMA

64 Face mask "ikpobi"

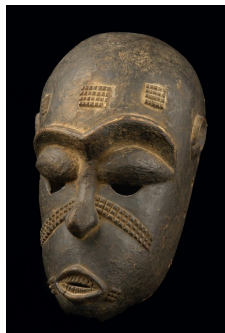
wood, brown patina, kaolin, accentuated round cheeks, vertical forehead tattoo, drilled holes in the chin area for insertion of a fibre beard, drillings around the rim, slightly dam., paint rubbed off, cracks, metal base; in former times the "ikpobi" mask type was used on victory celebrations at dances performed by returning warriors, while the heads of killed enemies were presented as trophies. Nowadays "ikpobi" mask figures appear in pairs of male and female mainly at funeral ceremonies.

H: 24 cm

Provenience: Manfred Schäfer, Ulm, Germany

Vera und Wolfgang Nerlich, Munich, Germany

Start bid: 500 €, estimate: 2.000 €



NIGERIA, IDOMA

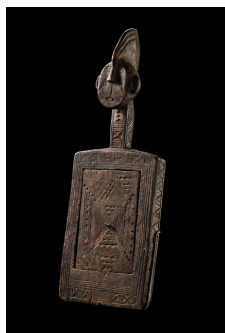
65 Face mask

light-coloured wood, black encrusted patina, projecting eyebrows, bulging eyelids with pierced see holes underneath, raised scarification marks, the mouth situated at the tip of the chin, slightly dam., crack (lower lip), base; presumably belonging to the "ikpobi" mask type, which was used on victory celebrations at dances performed by returning warriors, while the heads of killed enemies were presented as trophies. Nowadays "ikpobi" mask figures appear in pairs of male and female mainly at funeral ceremonies.

H: 32 cm

Provenience: Vera und Wolfgang Nerlich, Munich, Germany

Start bid: 400 €, estimate: 3.000 €



NIGERIA, IGALA

66 Anthropomorphic mirror box

wood, blackish brown encrusted patina, rectangular corpus carved with a flat deepening which is closed by a lid, the whole object coated with incised geometrical ornaments, crowned by an anthropomorphic head, slightly dam., paint rubbed off, cracks, metal base; can be assigned to the Iyale workshop in the Dekina district, where W. Fagg assigned comparable pieces to a carver named Umale. M. Caremans compared these anthropomorphic boxes with those made by the Nupe. The very flat Nupe boxes were used to hold manuscripts. But present object rather was used for insertion of a mirror.

H: 60 cm; B: 21 cm

Provenience: Vera und Wolfgang Nerlich, Munich, Germany

Start bid: 1.000 €, estimate: 3.500 €



NIGERIA, IGBO

67 Mask

wood, encrusted black pigment, kaolin, a gazing look from painted pupils and eyes framed with black paint, min. dam., missing parts through insect caused damage, traces of abrasion, on metal base; this mask type appeared at so-called "okoroshi" ceremonies, which are connected with rituals for deities or spirits of the water "owu". The mask type is spread from the southwestern to the northern Igbo country. During the rainy season all activities come to rest for about a month, in order to celebrate the appearance of the water spirits. Two groups of dancers are posted opposite to each other: those who incorporate the good spirits "okoroshi oma" or "beautiful ghosts", whose masks and costumes were dyed in white and on the opposite - those who incorporate the evil spirits "okoroshi ojo" or "malicious, dark ghosts", whose faces are blackened.

H: 29 cm

Provenience: Vera und Wolfgang Nerlich, Munich, Germany

Start bid: 250 €, estimate: 2.400 €



NIGERIA, IGBO

68 Mask

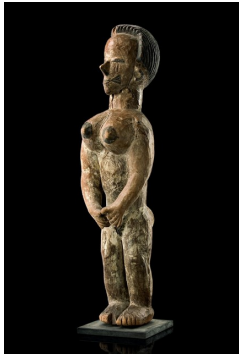
light brown wood, whitened oval face with a flat nose, scarification marks, eyebrows, lips and coiffure accentuated by black paint, enclosed by big ears, pierced around the rim, traces of insect caused damage, paint rubbed off, small missing parts, base

H: 24 cm

Provenience: Manfred Sackmann, Berlin, Germany

Vera und Wolfgang Nerlich, Munich, Germany

Start bid: 450 €, estimate: 3.000 €



NIGERIA, IGBO

69 Standing female figure

wood, light brown patina, kaolin, black paint, a slender body with remarkable voluminous breasts, emphasized by the framing, half-circular arranged arms in front of the body, the face showing a smug expression, caused by the unusual narrow and tapering nose and the lowered lids, triangular tattoos aside the mouth, slightly dam., cracks (left side of the head, neck, breast area, back), minor missing parts (hairline, toes), on metal plate; emphasis on sexual characteristics is most often found in masquerade puppets used to indicate deviant sexual behavior, though the use of this atypical figure, which depicts an European, is uncertain.

H: 50 cm

Provenience: Vera und Wolfgang Nerlich, Munich, Germany

Start bid: 400 €, estimate: 2.000 €



NIGERIA, IGBO

70 Ritual object "ofo"

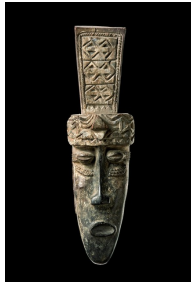
brass, partly encrusted patina, decorated with grooves and spirals, crowned by a stylized human head, four small feet on the back, min. dam., slight traces of corrosion; "ofo" objects symbolize the connection between the chief and his ancestors.

H: 19 cm

Provenience: Wolf, Zürich, Switzerland

Wolfgang Nerlich, Munich, Germany

Start bid: 150 €, estimate: 800 €



NIGERIA, IJAW

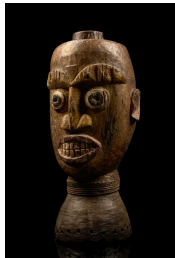
71 Water spirit mask

wood, partly encrusted mat patina, kaolin, of narrow form with pointed chin and scarification marks, crowned by a projecting headgear with ornamental carvings, pierced around the rim, missing parts through insect caused damage, slight traces of abrasion, base; these masks were worn horizontal, because the water spirits have their face in one level with the surface of the water as well.

H: 37 cm

Provenience: Vera und Wolfgang Nerlich, Munich, Germany

Start bid: 450 €, estimate: 2.500 €



NIGERIA, IJAW

72 Dance crest in shape of a human head

wood, encrusted brown patina with traces of red, black, white and yellow ochre, an elongated head, disc-shaped flattened on top, showing expressive facial features with protruding eyes and a prominent big mouth with bare teeth, opening backside for insertion of magical mass, dam., missing parts (eyes, brows, mouth, base), cracks, paint rubbed off

H: 36 cm

Provenience: Vera und Wolfgang Nerlich, Munich, Germany

Start bid: 350 €, estimate: 2.000 €



NIGERIA, ISOKO

73 Dignitary staff

wood, brown patina, kaolin, an elaborate carved base supporting a female half figure with upraised arms, holding a vessel on top of her head, min. dam., slight traces of abrasion, base;

the Isoko are an ethnic group settling in the western Niger Delta bordered by the Urhobo in the West and Northwest, the Ijo in the South and the Kwale Igbo and Aboh in the North and Northeast. Although the Isoko belong to the Edo according to their language, origin and culture, there are cultural overlappings with the Igbo, which probably refers to a common historical background.

H: 101 cm

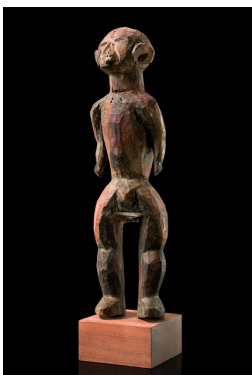
Provenience: Helmut Gernsheim, Castagnola, Switzerland

Arendt Oetker, Berlin, Germany

Lempertz Brussels, 25. April 2009, lot 90

Vera und Wolfgang Nerlich, Munich, Germany

Start bid: 300 €, estimate: 1.500 €



NIGERIA, MONTOL

74 Standing male figure

wood, reddish brown patina, traces of black paint, crude forms, the upper part of the body and the legs slightly twisted against each other, marked by massive thighs and short stump arms, the spherical head showing an abstract upturned face without mouth and chin, a bulging back, traces of insect caused damage (neck, cheek, right foot), cracks (head), block-like base;

the Montol are an ethnical group of about two million people, living along the northern banks of the Benue, between Jos and Shendam. Their sculptures were used for fortune telling and healing rites. They belong to a men society called "komtin". Figures of the Montol are quite rare and their style is not clearly defined. It varies from one carver to the other.

H: 45 cm

Provenience: Klinkmüller, Berlin, Germany

Inge Hett, Berlin, Germany

Vera und Wolfgang Nerlich, Munich, Germany

Start bid: 1.200 €, estimate: 5.000 €



NIGERIA, OGONI

75 Mask with hinged jaw "elu"

wood, brown and black paint, of oval hollowed form, crowned by a coiffure in two lobes, flanking the forehead in two horn-like plaits, min. dam., slight traces of abrasion; "elu" masks are worn by young men of the Ogoni secret society. They were attached to a cone-shaped fibre and cloth cap. The corresponding costumes varied. The small caricatures represent different characters. In a funny or tragic way they illustrate oral traditions in stories and songs.

H: 19 cm

Provenience: Aloys Faust, Cologne, Germany
Vera und Wolfgang Nerlich, Munich, Germany

Start bid: 1.200 €, estimate: 4.500 €



NIGERIA, OGONI

76 Horned mask "elu"

wood, dark brown patina, remains of paint, kaolin, of oval hollowed form, showing tribe-typical facial features and scarification marks, horns in the shape of rabbit ears projecting to the back, dam., missing parts through insect caused damage (esp. backside), slight traces of abrasion;

probably a variation of the "karikpo" mask type. The combination of human face and animal horns is a popular mask form in southeastern Nigeria. The horns symbolize superhuman power and strength.

H: 25 cm

Provenience: Feuerpeil, Aachen, Germany
Vera und Wolfgang Nerlich, Munich, Germany

Start bid: 600 €, estimate: 3.000 €



NIGERIA, OGONI

77 Mask with hinged jaw "elu"

wood, partly encrusted patina, black paint, showing the typical "snub nose" and full lips, crowned by an elaborate coiffure with middle parting, carved and panted tattoos, pierced around the rim, min. dam., slight traces of abrasion; "elu" masks are worn by young men of the "ogoni" secret society. They were attached to a cone-shaped fibre and cloth cap. The corresponding costumes varied. The small caricatures represent different characters. In a funny or tragic way they illustrate oral traditions in stories and songs.

H: 16,5 cm

Provenience: Manfred Zirngibl, Passau, Germany
Vera und Wolfgang Nerlich, Munich, Germany

Start bid: 350 €, estimate: 2.500 €



NIGERIA, OGONI

78 Mask with hinged jaw "elu"

wood, polychrome paint, tribe-typical facial features with full lips and raised scarification marks at the temples, pierced around the rim, fissures, traces of insect caused damage and abrasion

H: 19 cm

Provenience: Vera und Wolfgang Nerlich, Munich, Germany

Start bid: 400 €, estimate: 2.500 €



NIGERIA, OGONI

79 Mask with hinged jaw "elu"

wood, kaolin, black paint, scarification on the forehead, elaborate coiffure, min. dam., traces of abrasion;
"elu" masks are worn by young men of the Ogoni secret society. They were attached to a cone-shaped fibre and cloth cap. The corresponding costumes varied. The small caricatures represent different characters. In a funny or tragic way they illustrate oral traditions in stories and songs.

H: 22 cm

Provenience: Manfred Schäfer, Ulm, Germany
Vera und Wolfgang Nerlich, Munich, Germany

Start bid: 300 €, estimate: 2.500 €



NIGERIA, OGONI

80 Mask with hinged jaw "elu"

wood, encrusted blackish brown patina, showing typical facial features, originally probably wearing a kind of headgear, pierced around the rim, min. dam., traces of insect caused damage and abrasion

H: 18,5 cm

Provenience: Peter Loebarth, Hameln, Germany
Vera und Wolfgang Nerlich, Munich, Germany

Start bid: 200 €, estimate: 2.200 €



NIGERIA, OGONI

81 Mask with hinged jaw "elu"

wood, matt patina, black paint, kaolin, tribe-typical facial features with circular pierced eyes, cap-like headgear, pierced around the rim, min. dam., traces of abrasion

H: 18,5 cm

Provenience: Manfred Schäfer, Ulm, Germany
Vera und Wolfgang Nerlich, Munich, Germany

Start bid: 400 €, estimate: 2.000 €



NIGERIA, OGONI

82 Mask with hinged jaw "elu"

wood, matt patina, polychrome paint, tribe-typical facial features and scarification marks, coiffure with side parting, pierced around the rim, min. dam., traces of insect caused damage and abrasion

H: 20 cm

Provenience: Vera und Wolfgang Nerlich, Munich, Germany

Start bid: 300 €, estimate: 2.000 €



NIGERIA, OGONI

83 Mask with hinged jaw "elu"

wood, encrusted dark brown patina, fixed by plant-fibres, crowned by a small head-like headgear, raised scarification marks in the area of the forehead and the temples, pierced around the rim, rep. (cheeks), min. dam., slight traces of abrasion, minor missing parts

H: 20 cm

Provenience: Peter Loebarth, Hameln, Germany
Vera und Wolfgang Nerlich, Munich, Germany

Start bid: 500 €, estimate: 2.000 €



NIGERIA, OGONI

84 Mask with hinged jaw "elu"

wood, shiny brown patina,, narrow slit eyes, the coiffure consisting of four horn-like projecting lobes, min. dam., traces of insect caused damage and abrasion

H: 30,5 cm

Provenience: Vera und Wolfgang Nerlich, Munich, Germany

Start bid: 500 €, estimate: 1.800 €



NIGERIA, OGONI

85 Mask with hinged jaw "elu"

wood, dark brown patina, coiffure consisting of two side lobes and two horn-like appendages, min. dam., slight traces of abrasion

H: 24 cm

Provenience: Amu Reiter, Berlin, Germany

Vera und Wolfgang Nerlich, Munich, Germany

Start bid: 400 €, estimate: 1.800 €



NIGERIA, OGONI

86 Mask with hinged jaw "elu"

light brown wood, dark brown patina, tribe-typical facial features with "snub nose" and raised scarification marks, high-crested forehead ridge, pierced around the rim, min. dam., minor missing parts, slight traces of abrasion

H: 21 cm

Provenience: Vera und Wolfgang Nerlich, Munich, Germany

Start bid: 200 €, estimate: 1.800 €



NIGERIA, OGONI

87 Mask with hinged jaw "elu"

wood, kaolin, black paint, coiffure in two lobes, flanking the forehead in two horn-like plaits, min. dam., slight traces of abrasion;

"elu" masks are worn by young men of the Ogoni secret society. They were attached to a cone-shaped fibre and cloth cap. The corresponding costumes varied. The small caricatures represent different characters. In a funny or tragic way they illustrate oral traditions in stories and songs.

H: 15 cm

Provenience: Vera und Wolfgang Nerlich, Munich, Germany

Start bid: 450 €, estimate: 2.000 €



NIGERIA, OGONI

88 Mask with hinged jaw "elu"

wood, the facial plane whitened with kaolin, black paint, scarifications accentuated in red, wooden splinters forming the teeth, slightly dam., cracks, small missing parts, traces of abrasion

H: 11 cm

Provenience: Vera und Wolfgang Nerlich, Munich, Germany

Start bid: 150 €, estimate: 600 €



NIGERIA, TIV

89 Standing male figure

wood, blackish brown patina, encrusted in some areas, of compact stature with the arms carved close to the body, the round face marked by deepened glazed eyes with painted pupils, the head spread with a thick layer of clay-like mass with real hair, slightly dam., paint rubbed off, base; presumably an "atsuku" figure.

H: 26 cm

Provenience: Vera und Wolfgang Nerlich, Munich, Germany

Start bid: 200 €, estimate: 1.200 €



NIGERIA, TIV

90 Standing male figure

wood, rich dark brown patina, small remains of kaolin, a stocky body rising from bulky feet, especially expressive: glazed eyes with painted pupils, ears with drilled holes, slightly dam., minor missing parts;

Tiv figures can be divided in two groups: some, rather realistic, are portable, while the larger, more abstract images are posts. Both types seem to have been general tutelary deities revered for the protection and prosperity they provided agricultural lands and families, especially regarding marriage and human fertility.

H: 29,5 cm

Provenience: Peter Loebarth, Hameln, Germany

Vera und Wolfgang Nerlich, Munich, Germany

Start bid: 200 €, estimate: 900 €



NIGERIA, TIV

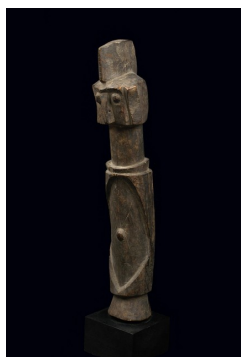
91 Voice disguiser

bone (human ?), with circular mouthpiece, partly covered with strings of miniature glassbeads, crowned by a human head with real hair, the eyes inset with glass, min. dam., slight traces of abrasion

H: 14 cm

Provenience: Vera und Wolfgang Nerlich, Munich, Germany

Start bid: 150 €, estimate: 900 €



NIGERIA, WURKUN

92 Post figure

wood, matt brown patina, schematized forms, abstract facial features, min. dam., cracks, missing parts through insect caused damage, block-like base;

the Wurkun are well-known for their pairs of male-female figures on iron spikes. Their function is to ensure the well-being of the owner and his family, with a special orientation towards the fertility of the crops. In most cases they were set up in the fields outside the teepee-like structure made of a grass mat, with a large pot for sacrifices nearby. Others were established on shrines within the owner's compound like the Chambas "tauwa" figures and, like them, were used for curing illness by divination.

H: 42,5 cm

Provenience: Vera und Wolfgang Nerlich, Munich, Germany

Start bid: 350 €, estimate: 1.800 €



NIGERIA, YORUBA

93 Pair of shrine figures

wood, greyish brown patina, male/female, their bodies well-rounded and of well-balanced proportions, the facial features and details like hands and feet, as well as the neck decolletage of the male figure delicate carved, both wearing loincloth and high tapering headcrest, each rising from an eight-sided base, dam., the surface shows traces of insect caused damage (above all the head of the female figure); for the Yoruba shrine figures are not thought to depict deities in person, but rather their venerators and priests. The figures should illustrate the solemnity of the sacrificial act and the dignity of the persons who make the sacrifice.

H: 30 cm

Provenience: Helmut Zake, Heidelberg, Germany

Vera und Wolfgang Nerlich, Munich, Germany

Start bid: 800 €, estimate: 5.000 €



NIGERIA, YORUBA, AREA OF IJEBU

94 Janus-headed headdress

wood, middle brown patina, encrusted in some areas, black paint, funnel-shaped base with wickerwork at the lower rim, nearly identical carved narrow, elongated heads with horns, extremely slanting eyes with mirror glass inlay, diamond-shaped mouth, dam., crack (between the heads), traces of insect caused damage (forehead and cheek on one side), place of repair (horn), paint rubbed off; the Ijebu Yoruba live near the coast, and their land is filled with numerous lagoons and rivers. It was the proximity and importance of water that led to the introduction of a cult known as "ekine", which is devoted to water spirits. There are three main water spirits, "igodo", the bird - "agira", the antelope - and "oni", the crocodile. "Okooro", represented by a human headdress, seems to act as intermediary. The present type presumably a mixture of "okooro" and "agira".

H: 55,5 cm

Provenience: Vera und Wolfgang Nerlich, Munich, Germany

Start bid: 450 €, estimate: 2.000 €



NIGERIA, YORUBA

95 Dance crest "egungun"

wood, honey brown patina, traces of indigo blue paint, the face showing round forms, dominated by big eyes and incised scarification marks, the incisors filed, a magical bundle affixed to the forehead, slightly dam., crack (head and base right hand side), metal base; the "egungun" society controls the relation between the ancestors and the living people. The "egungun" mask dancers appear in times of crisis, at commemorative ceremonies and on "odun egungun" festivities. Their function is to protect the people and guarantee the well-being of the community. The power of the masks is enhanced by special medicine "oogun", which is usually attached to the costume, in this case to the forehead.

H: 23,5 cm

Provenience: Inge Hett, Berlin, Germany

Vera und Wolfgang Nerlich, Munich, Germany

Start bid: 400 €, estimate: 2.000 €



NIGERIA, YORUBA

96 Dance crest "egungun"

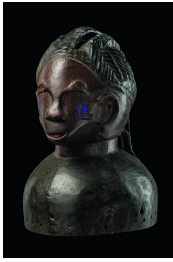
wood, reddish brown and black patina, half-spherical base, carved with an anthropomorphic head with the lobed coiffure widely projecting to the back, facial features and linear grooved scarification marks symmetrical arranged, slightly dam., missing parts (above all at the rim of the base), paint rubbed off, base; the "egungun" cult is closely related with funeral ceremonies and rites for worshipping the ancestors. The masks are completed by elaborate colourful costumes of multilayered textile in alternating colours and patterns.

H: 21 cm

Provenience: Inge Hett, Berlin, Germany

Vera und Wolfgang Nerlich, Munich, Germany

Start bid: 350 €, estimate: 2.000 €



NIGERIA, YORUBA

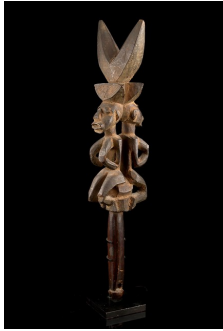
97 Dance crest "egungun"

wood, black and dark brown patina, indigo blue paint, mirror glass eyes, slightly dam., missing parts through insect caused damage (right rim), cracks (calotte, coiffure), base; the ancestors come to the town in the form of "egungun" to cleanse the community of wrongdoing and misfortune. They are called "ara orun" - "visitors from the other world".

H: 27,5 cm

Provenience: Vera und Wolfgang Nerlich, Munich, Germany

Start bid: 200 €, estimate: 900 €



NIGERIA, YORUBA

98 Dance staff "oshe shango"

wood, dark brown patina, encrusted with camwood powder, the handle circular in cross section, carved with two female figures, arranged back-to-back, their stylized bodies nearly identical formed, crowned by the double axe symbol, the eyes inset with nail heads, slightly dam., minor missing parts, cracks, paint rubbed off, metal base; used by men and women during "shango" celebrations. Their characteristic feature is the double axe symbol, in this case slightly modified. "Shango" is associated with fertilizing rain, he is said to be truth-loving and should punish liars and thieves.

H: 43 cm

Provenience: Vera und Wolfgang Nerlich, Munich, Germany

Start bid: 300 €, estimate: 2.000 €



NIGERIA, YORUBA

99 Ceremonial axe "aringo jagun"

wood, partly encrusted, brown patina, kaolin, iron blade, round handle, carved with a kneeling female figure with both hands up to the breasts, head with projection and inserted blade, dam., cracks, traces of corrosion; ceremonial axes are dedicated to "ogun", the deity of iron and war, sometimes to "shango", the god of thunder.

H: 53,5 cm

Provenience: Lempertz, Brussels, 26. April 2008, lot 145

Vera und Wolfgang Nerlich, Munich, Germany

Start bid: 350 €, estimate: 2.500 €



NIGERIA, YORUBA

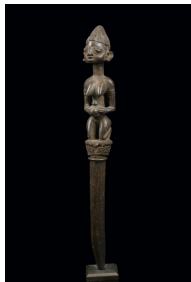
100 Ceremonial staff

bronze, metal, surmounted by a janiform head with mitra-shaped coiffure, min. dam., traces of corrosion, base

H: 52,5 cm

Provenience: Vera und Wolfgang Nerlich, Munich, Germany

Start bid: 200 €, estimate: 1.200 €



NIGERIA, YORUBA

101 Ifa oracle tapper

wood, dark brown patina, carved with kneeling female figure, min. dam., minor missing parts through insect caused damage, base; tappers are used by the diviners to strike the Ifa tray with the pointed end in order to attract "orunmilas" attention at the beginning of the session.

H: 38,5 cm

Provenience: Manfred Schäfer, Ulm, Germany (1981)

Vera und Wolfgang Nerlich, Munich, Germany

Start bid: 100 €, estimate: 1.500 €



NIGERIA, YORUBA

102 Ifa oracle head

ivory, dark brown patina, circular base, fine grooved coiffure, linear incised scarification marks, min. dam.; such figures symbolize the presence of "eshu", acting as mediator with the other deities.

H: 8,5 cm

Provenience: Vera und Wolfgang Nerlich, Munich, Germany

Start bid: 60 €, estimate: 500 €



NIGERIA, YORUBA

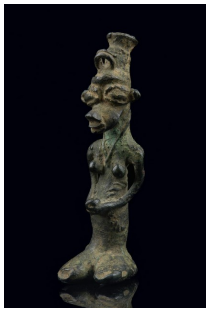
103 Bell "omo"

brass with dark patina, white pigment dots, elongated form with handle on top, decorated with a human face, min. dam., slight traces of corrosion, base; such bells were used for ritual purposes, probably to get in contact with the ancestors.

Provenience: Sotheby's ?

Vera und Wolfgang Nerlich, Munich, Germany

Start bid: 150 €, estimate: 1.000 €



NIGERIA, YORUBA

104 Kneeling female figure "onile"

brass, patina, showing the typical "ogboni" gesture, eyelet for support, traces of corrosion, encrusted with clay; "onile" figures were kept inside the "oshugbo" houses. They symbolize the founders of the community. According to Witte they were used for delivering decisive messages in case of conflict between "ogboni" members.

H: 15 cm

Provenience: Inge Hett, Berlin, Germany

Vera und Wolfgang Nerlich, Munich, Germany

Start bid: 100 €, estimate: 600 €



CAMEROON GRASSFIELDS, BAMILEKE

105 Small male power figure "mu po"

wood, encrusted blackish brown patina, cord, rectangular deepening in the back with remains of magical loading, slightly dam., minor missing parts (surface structure of the face, foot tips), base;

Bamileke healers and soothsayers used such small wooden statuettes to represent their patients, who would be treated at a distance. Sometimes the statuettes have a cavity in the back into which magical substances would be placed and the cavity closed with a band of leather or cloth. Some of them would be carried by mask-wearing members of the "kungan" society during their big rituals.

H: 13,5 cm

Provenience: Maurice W. Shapiro, New York, USA

Christie's New York, 11 November 1993, lot 104

Vera und Wolfgang Nerlich, Munich, Germany

Start bid: 1.000 €, estimate: 3.000 €



CAMEROON GRASSFIELDS, BAMILEKE

106 Small power figure "mu po"

wood, middle brown patina, encrusted in some areas, the head surmounted by a turban-shaped superstructure of blackish mass with cowrie shell, horn tip and feather bunch, asymmetrical crude carved facial features, base

H: 11,8 cm

Provenience: Vera und Wolfgang Nerlich, Munich, Germany

Start bid: 500 €, estimate: 1.600 €



CAMEROON GRASSFIELDS, BAMILEKE

107 Small power figure "mu po"

wood, blackish brown shiny patina, encrusted in some areas, cap-like coiffure, cavity for insertion of magical loading in the head, slightly dam., base

H: 8 cm

Provenience: Maurice W. Shapiro, New York, USA

Christie's New York, 11 November 1993, lot 104

Vera und Wolfgang Nerlich, Munich, Germany

Start bid: 600 €, estimate: 1.600 €



CAMEROON GRASSFIELDS, BAMILEKE

108 Standing male figure

wood, dark brown patina, beaded necklace, red dyed band of fabric, body with bulging belly and accentuated male gender, slightly dam., minor missing parts (head, left foot tip), base;

small figurines had various functions. They served as protection for the wearer against evil in any form. They were also used as badges of membership in a sacred organization. Others functioned as emblems of officialdom, related to indigenous government. And some figurines did healing duties in the hands of local practitioners or should cause fertility.

H: 14,5 cm

Provenience: Haberzettl, Munich, Germany

Vera und Wolfgang Nerlich, Munich, Germany

Start bid: 400 €, estimate: 2.000 €



CAMEROON GRASSFIELDS, BAMILEKE

109 Standing figure

wood, matt blackish brown patina, cord saturated with mass, abstract facial features, the eyes projecting on either side, a nearly bowl-shaped hollowed belly with square opening for charging with magical ingredients, slightly dam., missing part (right leg), block-like base

H: 12,5 cm

Provenience: Haberzettl, Munich, Germany

Vera und Wolfgang Nerlich, Munich, Germany

Start bid: 400 €, estimate: 1.500 €



CAMEROON GRASSFIELDS, BAMILEKE

110 Standing figure

wood, blackish brown patina, shiny in some areas, hole in the head for insertion of magical loading, slightly dam., missing part (right foot tip), metal plate

H: 11,5 cm

Provenience: Maurice W. Shapiro, New York, USA

Christie's New York, 11 November 1993, lot 104

Vera und Wolfgang Nerlich, Munich, Germany

Start bid: 500 €, estimate: 1.800 €



CAMEROON GRASSFIELDS, BAMILEKE

111 Standing figure

wood, black patina, encrusted in some areas, necklace of shiny blue miniature glass beads around neck and hips, fixed by brown mass, slightly dam., base

H: 12,5 cm

Provenience: Vera und Wolfgang Nerlich, Munich, Germany

Start bid: 300 €, estimate: 1.200 €



CAMEROON GRASSFIELDS, BAMILEKE

112 Prestige drinking horn

buffalo horn, dark patina, red pigment remains, front carved with a human figure, min. dam., slight traces of usage, base;
in all Grassfields kingdoms, drinking horns, plain or ornate, are a man's most important personal article, a reference to the significance of palm wine for shared sociability and pleasure and as a sacrificial libation substance.

Provenience: Vera und Wolfgang Nerlich, Munich, Germany

Start bid: 100 €, estimate: 900 €



CAMEROON GRASSFIELDS, BAMUM

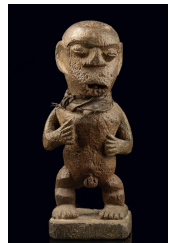
113 Fly whisk

wooden handle, partly stretched with leather resp. fabric, crowned by a human head decorated with red beads, min. dam., slight traces of usage, some beads missing, metal base

H: 88,5 cm

Provenience: Vera und Wolfgang Nerlich, Munich, Germany

Start bid: 350 €, estimate: 2.000 €



CAMEROON, BANGWA

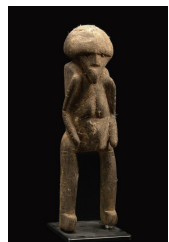
114 Standing male figure

wood, brown patina, with free carved arms, open mouth with inserted tongue, stripes of fabric saturated in mass around the neck, slightly dam., missing parts in the surface structure, right foot rest., crack (rectangular base)

H: 22 cm

Provenience: Vera und Wolfgang Nerlich, Munich, Germany

Start bid: 200 €, estimate: 1.200 €



CAMEROON, KAKA

115 Standing female figure

wood, matt patina, sacrificial traces, of abstract form, clamp-like arms, crowned by a head with pointed chin and simplified facial features, min. dam., slight traces of abrasion, base

H: 25 cm

Provenience: German Private Collection

Wolfgang Nerlich, Munich, Germany

Start bid: 300 €, estimate: 2.000 €



GABON, PUNU

116 Miniature mask

light-coloured and -weighted wood, the facial plane whitened with kaolin, encrusted in some areas, eyebrows and narrow slit eyes blackened, flat nose, vertical forehead ridge, the coiffure arranged in two "ear-like" arranged lobes, slightly dam., minor missing parts at the back of the rim and at the coiffure, paint rubbed off, base;
belonging to the so-called "white masks of the Ogooué". The "mukudji" or "okuyi" masks usually symbolize the spirit of a beautiful deceased girl.

H: 18 cm

Provenience: Lore Kegel, Hamburg, Germany (ca. 1990)

Neumeister, München, 11. November 2010, lot 201

Vera und Wolfgang Nerlich, Munich, Germany

Start bid: 150 €, estimate: 900 €



GABON, PUNU

117 Mask "okuyi"

light brown wood, white, black and red pigment, slightly asymmetrical facial features, bulbous coiffure, hole on top, min. dam., minor missing parts, slight traces of abrasion; belonging to the so-called "white-faced masks of the Okuyi". These masks represented female entities from the spirit world, fantastical beings who intervened in the villages on important collective occasions: bereavements, palavers, the birth of twins, times of epidemic, hunts for malevolent sorcerers, and so on. Masked dancers standing on stilts would confront each other in "jousts". Each dancer would be assisted by a team, whose purpose was to help him perform his competition with an acrobatic feat. The best dancer in the eyes of public would win the match.

H: 19,5 cm

Provenience: Vera und Wolfgang Nerlich, Munich, Germany

Start bid: 200 €, estimate: 1.200 €



D. R. CONGO

118 Two standing figures

wood, a) "crypto fetish", Suku, h: 19,5 cm, rep. (right heel), base; b) magical figure, Pindi, h: 16,5 cm, reddish brown patina, pierced arms, drilled hole in the head, block-like base

Provenience: a) Peter Loebarth, Hameln, Germany

Vera und Wolfgang Nerlich, Munich, Germany

Start bid: 300 €, estimate: 1.200 €



D. R. CONGO, BAKONGO

119 Standing power figure "nkisi"

wood, shiny brown patina, remains of pigments, package of magical mass on the head and at the abdomen, incised scapulae, min. dam., small missing parts (left foot tip, package), wooden base

H: 16,5 cm

Provenience: Vera und Wolfgang Nerlich, Munich, Germany

Start bid: 650 €, estimate: 2.500 €



D. R. CONGO, BASIKASINGO

120 Standing female figure

wood, brown patina, encrusted in some areas, fabric belt, min. dam., cracks, slight traces of abrasion, metal base;

the Basikasingo have rites for ancestors, who have the power to cause disease and misfortune. If a mischief happened, people tried to experience the wishes of the ancestors by interpreting dreams and by soothsaying. They were kept in small shrines under the authority and guardianship of a petty chief, village headman or dominant lineage elder. Sometimes such figures were individually identified ancestors, called "bashumbu".

H: 36 cm

Provenience: Vera und Wolfgang Nerlich, Munich, Germany

Start bid: 500 €, estimate: 1.500 €



D. R. CONGO, HEMBA

121 Mask

wood, matt greyish brown patina, of oval form, heart-shaped deepened facial plane with asymmetrical facial features, pierced around the rim, min. dam., traces of insect caused damage, metal base

H: 20 cm

Provenience: Vera und Wolfgang Nerlich, Munich, Germany

Start bid: 450 €, estimate: 2.500 €



D. R. CONGO, MBO/BIRA

122 Mask

wood, matt patina, black and red pigment remains, of oval form, overall paint with white dots, enclosed by a plant fibre cuff, an open teeth revealing mouth, completely pierced around the rim, min. dam., slight traces of abrasion

H: 25 cm

Provenience: Peter Loebarth, Hameln, Germany

Wolfgang Nerlich, Munich, Germany

Start bid: 400 €, estimate: 2.500 €



D. R. CONGO, CHOKWE

123 Face mask "mwana pwo"

wood, reddish brown patina, black paint, of oval hollowed form with a five-part coiffure, a broad teeth revealing mouth, typical cross tattoo on the forehead, pierced around the rim, min. dam., small missing parts, slight traces of abrasion, metal base;

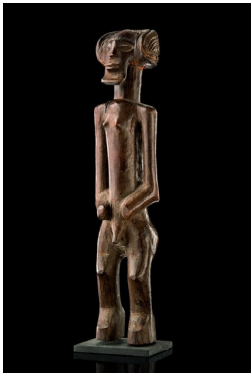
depicting a female ancestor, whereupon the Chokwe distinguish two characters: "pwo", a mature, adult woman and "mwana pwo", the younger female. Masks with few scarification details are more often said to represent the younger character. The "pwo" mask type appears during boy's "mukanda" initiation. In the performed dances the roles of women in Chokwe society is characterized. The mask type is always danced by men, who already have reached the highest stage of initiation.

H: 24 cm

Provenience: Peter Loebarth, Hameln, Germany

Vera und Wolfgang Nerlich, Munich, Germany

Start bid: 1.200 €, estimate: 5.000 €



D. R. CONGO, CHOKWE

124 Chief figure

wood, brown patina, an elongated trunk, flanked by angled arms, a strong neck carrying a head with accentuated facial features, a disc-shaped beard and "mutwe wa kayanda" headdress, min. dam., traces of insect caused damage, cracks, slight traces of abrasion, metal plate;

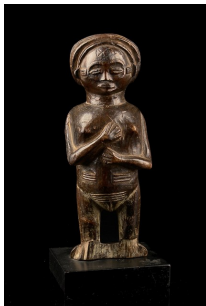
in Chokwe society chiefs are regarded as the representatives of God on earth, and as the intermediaries between the world of humans and the realm of ancestral and wilderness spirits that affect humans and their environments. The chief, or "mwanangana" is literally the owner of the land, the individual who is ultimately responsible for the well-being, success, fertility, and continuity of his people.

H: 38,5 cm

Provenience: German Private Collection

Vera und Wolfgang Nerlich, Munich, Germany

Start bid: 600 €, estimate: 4.000 €



D. R. CONGO, CHOKWE

125 Standing female figure

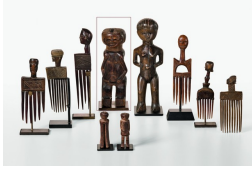
wood, blackish brown shiny patina, marked by a compact, massive body rising from short and thin legs, the elongated arms resting in front of the body, the head showing a voluminous grooved coiffure, while the facial plane is concentrated on a rather small area, old collection number at the back of the base "A-206", slightly dam., cracks (partly spread with blackish mass), missing parts (both feet, base), plate

H: 25 cm

Provenience: Bernd Schlimper, Düsseldorf, Germany

Vera und Wolfgang Nerlich, Munich, Germany

Start bid: 450 €, estimate: 2.500 €



D. R. CONGO, CHOKWE

126 Small standing figure

light brown wood, spotty, brown patina, compact body, the barrel-shaped trunk flanked by clamp-like arms, oval head with simplified facial features, min. dam., slight traces of abrasion, metal socle

H: 22,5 cm

Provenience: German Private Collection

Vera und Wolfgang Nerlich, Munich, Germany

Start bid: 200 €, estimate: 1.500 €



D. R. CONGO, CHOKWE

127 Three combs

wood, brown patina, a) six flat teeth, the handle carved with ornaments, crowned by a human head, h: 17,5 cm; b) fragmentary (only one half of the comb with four teeth preserved), surmounted by a head in profile, h: 23 cm; c) eight teeth, head in profile, h: 17 cm; each comb with slight traces of usage and small missing parts, base

Provenience: a) + b) Peter Loebarth, Hameln, Germany

c) Joseph Christiaens, Brussels, Belgium

Vera und Wolfgang Nerlich, Munich, Germany

Start bid: 250 €, estimate: 2.000 €



D. R. CONGO, CHOKWE

128 Three combs

wood, brown patina, a) six teeth, open worked handle, crowned by a human head, base, h: 19,5 cm; b) ten teeth, crowned by a head in profile, h: 15 cm; c) Luba, seven teeth, a long neck supporting a head in profile, base, h: 16 cm; all showing slight traces of abrasion

Provenience: a) Peter Loebarth, Hameln, Germany

b) Gerhard de Vos, Dormagen, Germany

c) Ingo Evers, Bonn, Germany

Vera und Wolfgang Nerlich, Munich, Germany

Start bid: 250 €, estimate: 1.800 €



D. R. CONGO, CHOKWE

129 Whistle

wood, brown patina, remains of black paint, crowned by a hat-like headgear, circular mouthpiece, min. dam., slight traces of usage

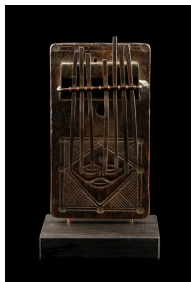
H: 10 cm

Provenience: Helmut Gernsheim, Castagnola, Switzerland

Arendt Oetker, Berlin, Germany

Vera und Wolfgang Nerlich, Munich, Germany

Start bid: 500 €, estimate: 2.000 €



D. R. CONGO, CHOKWE

130 Lamellophone "sanza"

wood, metal, rectangular corpus, carved with geometrical ornaments and stylized human face, seven metal keys, min. dam., traces of usage and abrasion; the length of the keys determines the different pitches. While playing, the sanza is held in both hands and the two thumbs, sometimes even the forefinger are plucking the strings.

M: 18 x 10 cm

Provenience: Ingo Evers, Bonn, Germany

Vera und Wolfgang Nerlich, Munich, Germany

Start bid: 200 €, estimate: 1.400 €



D. R. CONGO, CHOKWE

131 Tobacco container

wood, matt shiny patina, cylindrical form, handle in shape of a standing human figure, min. dam., slight traces of usage;
Chokwe and related people smoked tobacco, or inhaled it as snuff within a ritual context in order to honour the memory of lineage ancestors.

H: 7 cm

Provenience: Wolfgang Nerlich, Munich, Germany

Start bid: 100 €, estimate: 500 €



D. R. CONGO, DENGSE

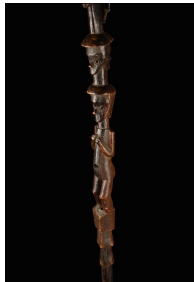
132 Pair of figures

wood, middle brown patina, partly encrusted with clay, crudely carved, sex characteristics emphasized, traces of red and white pigment on the face, flat heads with drilled holes for insertion of magical substances, slightly dam., cracks, missing part (right foot of the male figure), metal plate;
the Dengese are a small ethnical group in central Zaire, belonging to the so-called "Kuba Complex".

H: 17,5/18 cm

Provenience: Vera und Wolfgang Nerlich, Munich, Germany

Start bid: 250 €, estimate: 1.500 €



D. R. CONGO, DENGSE

133 Figural carved dignitary staff

wood, blackish brown patina, round shaft, carved with a stylized figure, supporting a janus-head, completed by a flat pierced handle, drilled hole in the abdomen of the figure, as well as in the shaft, slightly dam., crack (janus head), paint rubbed off

H: 90 cm

Provenience: Louis Clooten, Belgium, Ex-Colonial Officer

Zemanek-Münster, Würzburg, 15. Mai 2004, lot 565 ?

Vera und Wolfgang Nerlich, Munich, Germany

Start bid: 150 €, estimate: 1.500 €



D. R. CONGO, DENGSE

134 Ceremonial spoon

wood, black patina, a long and slender handle, decorated with a mask face and carved with a human fist on top, slightly dam., missing parts and cracks (spoon, thumb), metal base

H: 53 cm

Provenience: Vera und Wolfgang Nerlich, Munich, Germany

Start bid: 200 €, estimate: 1.500 €



D. R. CONGO, HEMBA

135 Male ancestor figure "singiti"

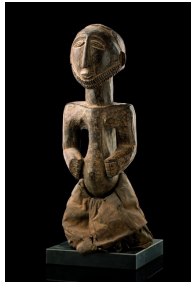
wood, blackish brown patina, encrusted with clay, firm stand, broad shoulders, distinctive face with prominent bearded chin, unusual styling of the coiffure, slightly dam., minor missing parts, crack (base), rep. (right forearm), presumably replaced (left forearm);
"singiti" figures depict important persons, such as war lords, clan founders or local chiefs. They provide a literal and symbolic link between past generations and current clan leaders, whose families are entrusted with their ownership and care. They were kept in special ceremonial huts, where they received sacrifices and prayers.

H: 40,5 cm

Provenience: Ludwig Bretschneider, Munich, Germany

Vera und Wolfgang Nerlich, Munich, Germany

Start bid: 1.600 €, estimate: 9.000 €



D. R. CONGO, HEMBA

136 Ancestor figure "singiti"

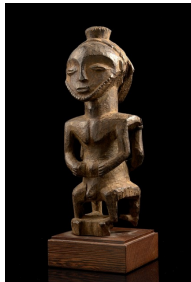
light brown wood, partly encrusted brown patina, remains of kaolin, rising from fragmentary legs, dressed with an apron, a long, strong neck carrying an oval head with chin beard, a disc-shaped flattened coiffure with cross ornament backside, min. dam., missing parts (legs), slight signs of abrasion, on wooden base

H: 45,5 cm

Provenience: Adrian Schlag, Brussels, Belgium

Vera und Wolfgang Nerlich, Munich, Germany

Start bid: 2.000 €, estimate: 9.000 €



D. R. CONGO, HEMBA

137 Janiform magical figure "kabeja"

wood, brown, partly encrusted patina, sacrificial traces, a male and a female figure, arranged back to back, showing free worked, angled arms, with the hands resting aside a prominent navel, square shoulders and a massive neck supporting the janus-head with oval faces, tribe-typical facial features, dam., rep. (arm), missing parts through insect caused damage, base

H: 25,5 cm

Provenience: Vera und Wolfgang Nerlich, Munich, Germany

Start bid: 400 €, estimate: 3.000 €



D. R. CONGO, HEMBA

138 Apes mask "soko mutu"

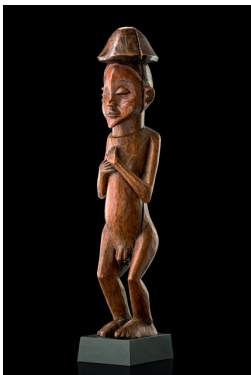
wood, partly encrusted dark brown patina, of characteristic form, a broad half-circular mouth and elongated tapering nose, hole in the parting, min. dam., minor missing parts through insect caused damage;

"soko mutu" mask dancers were costumed with a tapa cape, wig and beard from the pelt of the colobus ape. They were looked upon as frightening characters. Their apparently grinning mouth promised rage and disaster and reminded of the fears of death. Over 100 years. Artist and wood unknown.

H: 17 cm

Provenience: Vera und Wolfgang Nerlich, Munich, Germany

Start bid: 250 €, estimate: 1.500 €



D. R. CONGO, HOLO

139 Magical figure "mvunzi"

wood, reddish brown patina, traces of black paint, a high towering figure, rising from bent legs, with both hands resting on the breast, crowned by a broad face with tapering chin and a sun-helmet-like head crest, small drilled holes at the back and between the legs for insertion of magical substances, slightly dam., crack (head crest, face and body right hand side), block-like base;

presumably a magical figure "mvunzi", who protects humans against certain evil spirits. The main fortuneteller usually possesses such "mvunzi", who employs them in cases of sickness, for theft or for the hunt. In many cases, for example with theft, a "mvunzi" possesses not only a protective function, but also an offensive character by acting against the evil spirit and imposing on it an even greater evil.

H: 61 cm

Provenience: Peter Loebarth, Hameln, Germany

Belgian Private Collection

Vera und Wolfgang Nerlich, Munich, Germany

Start bid: 4.000 €, estimate: 15.000 €



D. R. CONGO, HOLO

140 Sitting figure of the Queen "Holo dya Mukhetu"

wood, dark brown patina, traces of camwood powder, symmetrical posture with elbows on the knees, the coiffure arranged in two lateral braids, cavities for insertion of magical material in head and breast, dam., missing parts through insect caused damage and weathering, both forearms missing

H: 22 cm

Provenience: Gerhard de Vos, Dormagen, Germany

Vera und Wolfgang Nerlich, Munich, Germany

Start bid: 350 €, estimate: 1.800 €



D. R. CONGO, HOLO

141 Framed figure "nzambi"

wood, slightly encrusted brown patina, arching frame, crowned by a seated bird, a figure with outstretched arms inserted, min. dam., small missing parts, slight traces of abrasion, base;

the Holo are a small ethnic group, living in the borderland between Zaire and Angola. In the course of their history they were exposed to various influences. The Pende crossed their realm, the Kongo introduced the sacred kaolin and their masquerades are adopted from the Yaka.

H: 19,5 cm; B: 11,5 cm

Provenience: Joseph Christiaens, Brussels, Belgium

Vera und Wolfgang Nerlich, Munich, Germany

Start bid: 250 €, estimate: 1.600 €



D. R. CONGO, HOLO

142 Standing figure

wood, brown patina, blackened in parts, without feet rising from a rectangular base, geometrical incisions on belly and back, crowned by a sickle-shaped coiffure, min. dam., small missing parts, slight traces of abrasion, metal base

H: 30 cm

Provenience: Gerhard de Vos, Dormagen, Germany

Vera und Wolfgang Nerlich, Munich, Germany

Start bid: 300 €, estimate: 1.200 €



D. R. CONGO, HOLO

143 Standing female figure

light-coloured wood, remains of reddish brown patina, string of miniature glass beads around the neck, incised scarifications on belly and face, drilled hole in the parting and on the underside ("kryptofetish"), dam., paint rubbed off, traces of old age and usage, base

H: 22 cm

Provenience: Vera und Wolfgang Nerlich, Munich, Germany

Start bid: 300 €, estimate: 1.200 €



D. R. CONGO, HOLO

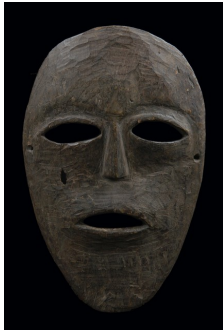
144 Zoomorphic mask

wood, shiny brown patina, blackened in parts, in form of a stylized antelope (?), showing slanting eyes and a pointed pair of horns, pierced around the rim, min. dam., slight traces of abrasion, base

H: 26,5 cm

Provenience: Vera und Wolfgang Nerlich, Munich, Germany

Start bid: 200 €, estimate: 1.200 €



D. R. CONGO, HUNDE

145 Mask

wood, partly shiny dark brown patina, of oval, flat form, pierced eyes and mouth, min. dam., minor missing parts, fissures, slight traces of abrasion;
the Hunde are a small ethnical group living to the northwest of Lake Kivu. Their masking tradition combines the Kumu and Lega styles. Their society system is organized by the "mbuntsu" society. Masks like the present one should indicate a high ranking member of the "mbuntsu" society.

H: 27,5 cm

Provenience: Peter Loebarth, Hameln, Germany
Vera und Wolfgang Nerlich, Munich, Germany

Start bid: 250 €, estimate: 1.500 €



D. R. CONGO, ITURI

146 Mask

wood, red and white pigment, prominent forehead with metal tag, circular pierced eyes, rectangular mouth with separate worked teeth, min. dam., small missing parts, cracks, slight traces of abrasion, base

H: 26 cm

Provenience: Michel van den Dries, Gavere, Belgium
Vera und Wolfgang Nerlich, Munich, Germany

Start bid: 650 €, estimate: 3.000 €



D. R. CONGO, ITURI

147 Mask

wood, matt patina, of oval form, the face halves dyed in different colours, mouth with separate worked teeth, min. dam., cracks, missing parts through insect caused damage on the rear, base;

Ituri is called a rain forest region, the home of various ethnical groups. Their mask types show great stylistic similarities, so that it can be talked about one stylistic region.

H: 23,5 cm

Provenience: Peter Loebarth, Hameln, Germany
Wolfgang Nerlich, Munich, Germany

Start bid: 600 €, estimate: 3.000 €



D. R. CONGO, ITURI

148 Mask

dark brown wood, white paint, of oval form, small almond-shaped slit eyes, the whole facial plane painted with dots, pierced around the rim, min. dam., slight traces of abrasion

H: 26,5 cm

Provenience: Peter Loebarth, Hameln, Germany
Wolfgang Nerlich, Munich, Germany

Start bid: 600 €, estimate: 2.500 €



D. R. CONGO, KASONGO

149 Power half figure "kakudji"

wood, brown patina, the lower part of the body covered by a loincloth made from stripes of animal skin, the bearded face surmounted by a funnel-shaped projection filled with magical mass, min. dam., traces of insect caused damage, base

H: 21 cm

Provenience: Wolfgang Ketterer, Munich, 6 May 1978, lot 509
Vera und Wolfgang Nerlich, Munich, Germany

Start bid: 650 €, estimate: 3.500 €



D. R. CONGO, KASONGO

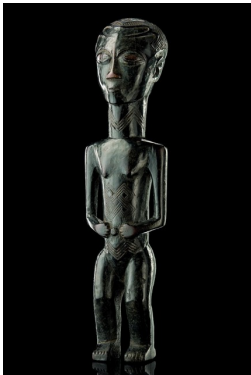
150 Power half figure "kakudji"

wood, partly shiny brown patina, string of plant fibre and animal skin, head with elongated chin beard, cavity in the head filled with magical material, min. dam., cracks, small missing parts, slight traces of abrasion;
the Kasongo are neighbours with the Hemba, the Songe, the Bangubangu, the Kusu and the Tetela, which influenced their figures stylistically.

H: 27,5 cm

Provenience: Peter Loebarth, Hameln, Germany
Vera und Wolfgang Nerlich, Munich, Germany

Start bid: 850 €, estimate: 3.000 €



D. R. CONGO, KUBA

151 Standing figure

wood, shiny, blackish brown patina, barrel-shaped upper part of the body with proportionally thin arms, decorated with elaborate scarification marks, which can even be found on the strong neck, the head marked by symmetrical facial features with serene expression and tribe typical coiffure, slightly dam., cracks (above all at the back of the head), slight traces of abrasion;
probably a figure called "ndop", representing the highest leaders of the Kuba "nyim". The statues were kept in the womens rooms. They should provide fertility and should substitute the king during times of absence.

H: 35 cm

Provenience: Maria Wyss, Basel, Switzerland
Vera und Wolfgang Nerlich, Munich, Germany

Start bid: 1.200 €, estimate: 5.000 €



D. R. CONGO, KUBA

152 Mask "pwoom itok"

wood, polychrome paint, conical protruding eyes, enclosed by drilled holes and horn-like appendages, raffia and cloth bonnet with cowrie shells and beads backside, min. dam., slight traces of abrasion, base;
this mask is known as "pwoom itok", "ishendemala", "ishyeenmaal" or "shene malula". It can be found among various Kuba groups, including the Bushoong and the Ngeende. It appears during the young men's initiation and also performs as a dance mask. It incarnates an old wise man who is consulted by the other dancers. Among the Bushong it is worn by members of the "babende" secret society, which is responsible for the apprehension of criminals.

H: 27 cm

Provenience: Stefan Lank, Munich, Germany
Wolfgang Nerlich, Munich, Germany

Start bid: 800 €, estimate: 4.000 €



D. R. CONGO, KUBA

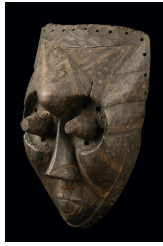
153 Mask "pwoom itok"

light brown wood, thick dark brown patina, remains of paint, conical protruding eyes, enclosed by drilled holes and horn-like appendages, min. dam., slight traces of abrasion, metal base;
this mask is known as "pwoom itok", "ishendemala", "ishyeenmaal" or "shene malula". It can be found among various Kuba groups, including the Bushoong and the Ngeende. It appears during the young men's initiation and also performs as a dance mask. It incarnates an old wise man who is consulted by the other dancers. Among the Bushong it is worn by members of the "babende" secret society, which is responsible for the apprehension of criminals.

H: 22,5 cm

Provenience: Vera und Wolfgang Nerlich, Munich, Germany

Start bid: 450 €, estimate: 4.000 €



D. R. CONGO, KUBA

154 Mask "pwoom itok"

wood, shiny dark brown patina, remains of polychrome paint, conical protruding eyes, enclosed by drilled holes, min. dam., minor missing parts, slight traces of abrasion

H: 26,5 cm

Provenience: Vera und Wolfgang Nerlich, Munich, Germany

Start bid: 200 €, estimate: 1.600 €



D. R. CONGO, KUBA

155 Friction oracle "itombwa"

light brown wood, shiny brown patina, a short-legged elongated body with flat back and human head, complete rubbing implement, collection number "K134", min. dam., slight traces of usage;

regarded as infallible divinatory instruments, friction oracles were used to mediate between diviners and omniscient nature spirits in order to determine the cause of illness and appropriate courses of treatment and to expose dishonesty.

H: 5 cm; L: 29 cm

Provenience: Kegel-Konietzko, Hamburg, Germany

Vera und Wolfgang Nerlich, Munich, Germany

Start bid: 150 €, estimate: 1.200 €



D. R. CONGO, KUMU

156 Mask

wood, matt brown patina, kaolin, characterized by large round eyes and an open mouth with visible teeth, pierced around the rim, dam., missing parts, traces of abrasion, cracks, base;

this mask comes from the eastern part of the area, occupied by the Kumu close to the Nyanga. It is said to represent an owl and was danced to "know the things of the forest" by the initiates when they resided in initiation camps.

H: 32 cm

Provenience: Peter Loebarth, Hameln, Germany

Wolfgang Nerlich, Munich, Germany

Start bid: 800 €, estimate: 3.000 €



D. R. CONGO, KUMU

157 Mask "nsembu"

wood, matt patina, remains of paint and kaolin, large eyes, an open mouth with visible teeth, min. dam., slight traces of abrasion, base

H: 22,5 cm

Provenience: Peter Loebarth, Hameln, Germany

Vera und Wolfgang Nerlich, Munich, Germany

Start bid: 600 €, estimate: 2.000 €



D. R. CONGO, KUMU

158 Mask

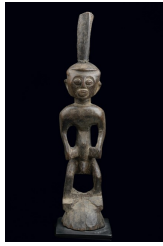
wood, shiny dark brown patina, oval, slightly vaulted form, rectangular pierced eyes and mouth, pierced around the rim, slight traces of abrasion, base;

apart from a number of different figures used in prophecy and ancestor figures, their most important ritual objects are masks, called "nsembu" or "ibole", which appear in paired dances that contrast male and female roles during initiation into the "nkunda" divination society. These masks are of abstract shape with big eyes and rectangular mouth and often show geometric patterns in white, black and red.

H: 27,5 cm

Provenience: Vera und Wolfgang Nerlich, Munich, Germany

Start bid: 400 €, estimate: 2.000 €



D. R. CONGO, KUSU

159 Standing power figure "nkisi"

wood, slightly encrusted brown patina, expressive facial features with visible teeth, animal horn on top, min. dam., missing parts (base), slight traces of abrasion, metal plate

H: 34,5 cm

Provenience: Peter Loebarth, Hameln, Germany
Vera und Wolfgang Nerlich, Munich, Germany

Start bid: 300 €, estimate: 2.000 €



D. R. CONGO, KUYU

160 Dance club "ebongo"

light brown wood, black and red paint, staff-shaped handle, the neck decorated with geometrical ornaments, supporting a big head with flat facial features, an oval mouth with revealed teeth, crowned by a high tapering coiffure, min. dam., cracks, traces of insect caused damage, slight traces of abrasion, base

H: 51 cm

Provenience: Martin Lippmann, Frankfurt am Main, Germany
Zemanek-Münster, Würzburg, 22. November 2003, lot 356
Vera und Wolfgang Nerlich, Munich, Germany

Start bid: 800 €, estimate: 2.500 €



D. R. CONGO, KWESE

161 Mask

wood, reddish brown patina, a heart-shaped facial plane, accentuated by kaolin, pierced around the rim, traces of insect caused damage and abrasion

H: 26,5 cm

Provenience: Peter Loebarth, Hameln, Germany
Wolfgang Nerlich, Munich, Germany

Start bid: 400 €, estimate: 2.000 €



D. R. CONGO, LEGA

162 Mask "lukwakongo"

wood, light brown patina, kaolin, the facial plane subdivided by a blackened nose ridge, protruding eyes with drilled pupils, drilled holes in the chin area for attachment of a raphia beard, min. dam., small missing parts, fine cracks

H: 19 cm

Provenience: Vera und Wolfgang Nerlich, Munich, Germany

Start bid: 400 €, estimate: 1.600 €



D. R. CONGO, LEGA

163 Big horned mask "kayamba"

wood, honey brown and greyish brown patina, human long-face mask with remains of kaolin, which originally covered the whole mask, drilled holes around the rim, dotted tattoos on the cheeks, slightly dam., missing parts (both horn tips, nose, left eye), hairline cracks, on base;

this is the only type of Lega mask that is exclusively worn before the face in the few rites and places where it occurs. In some instances two masks of this type perform together when they represent troublesome strangers. This type of mask performs in very few "yananio" and "kindi" rites. In some cases it is part of the baskets containing collectively owned initiation objects. In other instances the mask belongs to a preceptor of "kindi" grade.

H: 45 cm

Provenience: Peter Loebarth, Hameln, Germany
Vera und Wolfgang Nerlich, Munich, Germany

Start bid: 1.500 €, estimate: 5.000 €



D. R. CONGO, LEGA

164 Mask "idimu"

wood, dark brown patina, kaolin, heart-shaped facial plane with typical features, a short beard made from plant fibres, min. dam., minor missing parts, traces of abrasion; Lega masks are "bwami" initiation objects. There are five different types: "lukwakongo", "kayamba", "idimu", "muminia", and "lukungu". They serve as important marks of rank, identifying the owners as members of specific "bwami" levels. The "idimu" mask is owned collectively and is kept by an appropriate member of "yananio" or "kindi". In a major performance, the "idimu" mask is hung on a fence surrounded by the smaller, individually owned "lukwakongo" masks.

H: 21,5 cm

Provenience: Vera und Wolfgang Nerlich, Munich, Germany

Start bid: 1.200 €, estimate: 4.500 €



D. R. CONGO, LEGA

165 Mask "idimu"

light brown wood, shiny dark brown patina, heart-shaped deepened facial plane, curved brows with dots, min. dam., traces of abrasion

H: 20,5 cm

Provenience: Peter Loebarth, Hameln, Germany

Vera und Wolfgang Nerlich, Munich, Germany

Start bid: 450 €, estimate: 3.000 €



D. R. CONGO, LEGA

166 Mask

made of the kneecap of an elephant, dark brown patina, drilled holes around the rim, slightly dam., minor missing parts, base;

Lega masks are "bwami" initiation objects. There are five different types: "lukwakongo", "kayamba", "idimu", "muminia", and "lukungu". They serve as important marks of rank, identifying the owners as members of specific "bwami" levels. The "idimu" mask is owned collectively and is kept by an appropriate member of "yananio" or "kindi". In a major performance, the "idimu" mask is hung on a fence surrounded by the smaller, individually owned "lukwakongo" masks.

H: 20,5 cm

Provenience: Peter Loebarth, Hameln, Germany

Vera und Wolfgang Nerlich, Munich, Germany

Start bid: 1.000 €, estimate: 3.500 €



D. R. CONGO, LEGA

167 Small mask "lukwakongo"

wood, shiny brown patina, remains of pigments, beard made from plant fibres, min. dam., fissures;

young men received the "lukwakongo" masks during the "yananio" rites. These masks were the most important insignia of rank until the owner moved to the higher level of "kindi" and trades his wooden mask for an ivory one, called "lukungu". These masks were emblems of rank and visible signs for the connection between the deceased and the living, between former initiates and their successors. They were presented during different stages of initiation.

H: 15 cm

Provenience: Peter Loebarth, Hameln, Germany

Vera und Wolfgang Nerlich, Munich, Germany

Start bid: 450 €, estimate: 3.000 €



D. R. CONGO, LEGA

168 Miniature mask "lukwakongo"

light brown wood, kaolin, blackened in parts, dotted and cross-shaped scarification marks, plant fibre beard, pierced around the rim, min. dam., slight traces of abrasion; young men received the "lukwakongo" masks during the "yananio" rites. These masks were the most important insignia of rank until the owner moved to the higher level of "kindi" and trades his wooden mask for an ivory one, called "lukungu". These masks were emblems of rank and visible signs for the connection between the deceased and the living, between former initiates and their successors. They were presented during different stages of initiation.

H: 10,5 cm

Provenience: Vera und Wolfgang Nerlich, Munich, Germany

Start bid: 250 €, estimate: 2.000 €



D. R. CONGO, LEGA

169 Mask "lukwakongo"

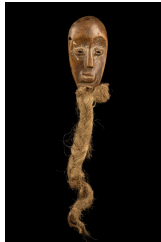
wood, matt patina, remains of kaolin, blackened in parts, typical heart-shaped facial plane with elongated nose ridge, drilled holes in the chin area for attachment of a raphia beard, min. dam., minor missing parts; Lega masks are marks of rank within the different levels of initiation in the "bwami" society. There are five different mask types: "lukwakongo", "kayamba", "idimu", "muminia", and "lukungu". Young men received the "lukwakongo" masks during the "yananio" rites. These masks were the most important insignia of rank until the owner moved to the higher level of "kindi" and trades his wooden mask for an ivory one, called "lukungu".

H: 18,5 cm

Provenience: Peter Loebarth, Hameln, Germany

Vera und Wolfgang Nerlich, Munich, Germany

Start bid: 200 €, estimate: 2.000 €



D. R. CONGO, LEGA

170 Small mask "lukwakongo"

wood, brown patina, remains of kaolin, long beard made from plaited plant fibres, min. dam., slight traces of abrasion

H: 14 cm

Provenience: Peter Loebarth, Hameln, Germany

Vera und Wolfgang Nerlich, Munich, Germany

Start bid: 200 €, estimate: 1.800 €



D. R. CONGO, LEGA

171 Miniature mask "lukwakongo"

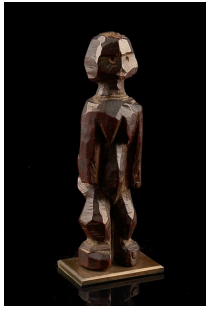
wood, blackish brown patina, oval form with reduced, slightly asymmetrical facial features, min. dam., traces of abrasion

H: 11,5 cm

Provenience: Peter Loebarth, Hameln, Germany

Vera und Wolfgang Nerlich, Munich, Germany

Start bid: 150 €, estimate: 600 €



D. R. CONGO, LEGA

172 Multiheaded figure "sakimatwematwe"

wood, dark red patina, a crude carved female figure, the back of the head carved with a second face, simplified as the first, but individually formed, slightly dam. (feet), metal plate; the multi-headed figure demonstrates the ability of the high-level "bwami" members, as a result of the initiation process, to see in many different directions and to be wise and fair minded.

H: 18 cm

Provenience: Manfred Schäfer, Ulm, Germany
Vera und Wolfgang Nerlich, Munich, Germany

Start bid: 200 €, estimate: 1.500 €



D. R. CONGO, LEGA

173 Three animal figures

wood, a) dark brown patina, kaolin, "mugugundu", bulky stature with open mouth, l: 24 cm, h: 5,5 cm; b) slightly encrusted brown patina, quadruped with big head, basee, l: 17,5 cm, h: 5,5 cm; c) brown patina, kaolin, quadruped with long tail, blackened incisions, l: 18 cm, h: 5,5 cm; all showing slight traces of abrasion

Provenience: a) Gerhard de Vos, Dormagen, Germany
Vera und Wolfgang Nerlich, Munich, Germany

Start bid: 200 €, estimate: 1.000 €



D. R. CONGO, LELE/KUBA

174 Mask

wood, encrusted brown patina, shield-shaped flat with long grass beard and plant fibre bonnet, pierced around the rim, min. dam., small missing parts (nose tip), slight traces of abrasion

H: 27 cm

Provenience: Peter Loebarth, Hameln, Germany
Vera und Wolfgang Nerlich, Munich, Germany

Start bid: 500 €, estimate: 4.000 €



D. R. CONGO, LELE

175 Mask

wood, shiny dark brown patina, of flat u-shaped form, remains of a bonnet made from plant fibres on the rear, pierced around the rim, min. dam., cracks, slight traces of abrasion; the Lele are decisively influenced by neighbouring Kuba groups, which makes it difficult to differentiate their ritual artworks from those of the other Kuba kinsmen. Typical however, are shield-shaped, flat masks, painted in various colours, and with slit pierced eyes, several eye brows, and small mouths.

H: 25,5 cm

Provenience: Vera und Wolfgang Nerlich, Munich, Germany

Start bid: 400 €, estimate: 2.500 €



D. R. CONGO, LUALWA

176 Anthropomorphic face mask

wood, blackish brown patina, camwood powder, a vaulted forehead, split by the sharp-edged elongated nose ridge, kaolin rubbed into the deepening of the notched scarification marks, plant fibre cord backside for fixing the mask with the mouth, dam., minor missing parts, paint rubbed off, cracks; the Lualwa masks are all used in the "bangongo" dance to appease the spirits, increase hunting success, and initiate "bangongo" society dancers. They sometimes perform at funerals of dignitaries but are danced only at night, so as not to harm women.

H: 33 cm

Provenience: Peter Loebarth, Hameln, Germany
Wolfgang Nerlich, Munich, Germany

Start bid: 1.000 €, estimate: 5.000 €



D. R. CONGO, LUBA

177 Torso of a female figure

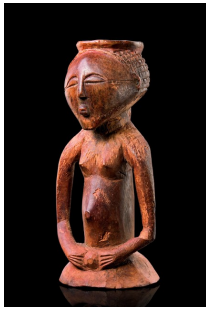
wood, blackish brown patina, the body arranged frontal and symmetrical, the large-scale face slightly turned up, showing well-balanced facial features, the coiffure arranged in a plaited pattern, dam., scratches, paint rubbed off, cracks, breakage (right forearm), block-like base;

the posture of the head and arms, together with the facial features creating a dignified expression.

H: 19 cm

Provenience: Vera und Wolfgang Nerlich, Munich, Germany

Start bid: 600 €, estimate: 5.000 €



D. R. CONGO, LUBA

178 Magical half figure

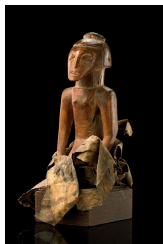
light brown wood, reddish brown patina, cavity with remains of magical mass on the head, min. dam., traces of insect caused damage;

magical materials included items thought to have rare and enhancing life powers, such as pulverized fragments of human bone, or the hair of twins. By supplying the object in this way, the ritual specialist invites the spirit to inhabit the receptacle, which can then be used to assist with particular tasks.

H: 29 cm

Provenience: Vera und Wolfgang Nerlich, Munich, Germany

Start bid: 400 €, estimate: 1.500 €



D. R. CONGO, LUBA

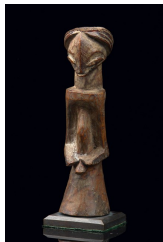
179 Half figure "kakudji"

wood, brown, partly shiny patina, oval head, a package with magical mass on top, loincloth, min. dam., cracks, slight traces of abrasion, base

H: 20 cm

Provenience: Vera und Wolfgang Nerlich, Munich, Germany

Start bid: 250 €, estimate: 1.500 €



D. R. CONGO, LUBA

180 Small male oracle figure

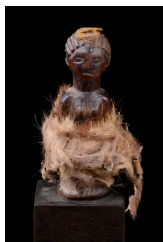
wood, brown patina, remains of pigments, stylized forms and facial features, a hole on top of the head filled with magical mass, min. dam., slight traces of abrasion, base

H: 11,5 cm

Provenience: Peter Loebarth, Hameln, Germany

Vera und Wolfgang Nerlich, Munich, Germany

Start bid: 150 €, estimate: 1.500 €



D. R. CONGO, LUBA

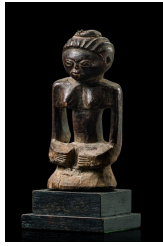
181 Miniature power figure

wood, blackish brown patina, the body wrapped with strips of fur, head with cavity, inserted with magical mass and fabric, drilled holes below the breast, probably from metal tags, drilled ear holes, slightly dam., base

H: 7,8 cm

Provenience: Vera und Wolfgang Nerlich, Munich, Germany

Start bid: 100 €, estimate: 300 €



D. R. CONGO, LUBA/HEMBA

182 Small half figure "kakudji"

wood, brown patina, the lower part originally dressed with a loincloth, crowned by a package of magical mass, min. dam., cracks, base

H: 13,5 cm

Provenience: Hans Koller, St. Gallen, Switzerland

Vera und Wolfgang Nerlich, Munich, Germany

Start bid: 250 €, estimate: 1.600 €



D. R. CONGO, LUBA

183 Three power half figures "kakudji"

wood, blackish brown patina, a) female, with both hands supporting the breasts, h: 13 cm, cavity in the head, filled with magical mass, raised scarification marks, slightly dam.; b) female, both hands resting aside the prominent navel, h: 14 cm, opening in the head, slightly dam., cracks, minor missing parts, metal plate; c) power figure wrapped with fur, h: 12,5 cm, various cavities (head, ears, underside) filled with mass, some traces of kaolin, slightly dam., cracks

Provenience: Vera und Wolfgang Nerlich, Munich, Germany

Start bid: 150 €, estimate: 1.800 €



D. R. CONGO, LUBA

184 Fragmentary figure

wood, encrusted brown patina, probably from a power figure "kakudji", three metal tags in the area the head, ring-shaped head crest with cavity for insertion of magical material, min. dam., cracks, traces of insect caused damage, base

H: 13 cm

Provenience: Peter Loebarth, Hameln, Germany

Vera und Wolfgang Nerlich, Munich, Germany

Start bid: 100 €, estimate: 900 €



D. R. CONGO, LUBA

185 Miniature half figure

wood, partly shiny brown patina, hole on top of the head closed by a metal tag, min. dam., slight traces of abrasion, base

H: 8,5 cm

Provenience: Peter Loebarth, Hameln, Germany

Vera und Wolfgang Nerlich, Munich, Germany

Start bid: 100 €, estimate: 900 €



D. R. CONGO, LUBA

186 Three power half figures

wood, a) half figure "kakudji", matt greyish black patina, band of fur, h: 9 cm, decorating nail in the head, slightly dam., metal plate; b) half figure "kakudji", matt greyish brown patina, h: 8,5 cm, round deepening in the head, slightly dam., crack, plate; c) half figure, Tabwa, reddish brown patina, traces of black paint, drilled holes in belly, ears and head, slightly dam., base

Provenience: a) + b) Ingo Evers, Bonn, Germany

c) Peter Loebarth, Hameln, Germany

Vera und Wolfgang Nerlich, Munich, Germany

Start bid: 200 €, estimate: 1.800 €



D. R. CONGO, LUBA (?)

187 Magical figure

wood, shiny black patina, encrusted in some areas, symmetrical arranged body, regular facial features, with free carved arms supporting a horn-shaped object, originally filled with magical ingredients, slightly dam., base

H: 11 cm

Provenience: Joseph Christiaens, Brussels, Belgium

Vera und Wolfgang Nerlich, Munich, Germany

Start bid: 200 €, estimate: 1.600 €



D. R. CONGO, LUBA

188 Mask board

wood, matt patina, paint remains, carved with a superimposed mask face surrounded by linear incisions, pierced around the rim, min. dam., traces of insect caused damage and abrasion;

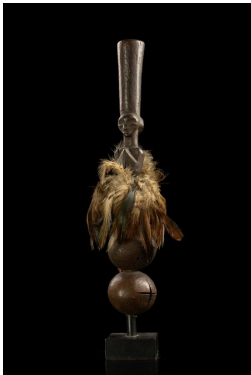
these masks are worn like an amulet or preserved in the house to protect the owner.

H: 20 cm

Provenience: Peter Loebarth, Hameln, Germany

Vera und Wolfgang Nerlich, Munich, Germany

Start bid: 200 €, estimate: 1.200 €



D. R. CONGO, LUBA

189 Rattle

wood, dark brown patina, feathers, three bowl-shaped nuts with slits, filled with seeds, surmounted by a halffigure with mortar-like headgear, min. dam., cracks, base;

Luba rattles are central to divination practices for healing the sick and reversing misfortune.

A Luba diviner enters a state of spirit possession through a combination of percussion and song. Female relatives sing the "Song for Twins" to invoke the spirits attention, while shaking rattles and ringing bells. Once the spirit has "mounted" the diviners head, the women continue to play the instruments in order to maintain the presence of the spirit throughout the duration of the consultation.

H: 29,5 cm

Provenience: Joseph Christiaens, Brussels, Belgium

Vera und Wolfgang Nerlich, Munich, Germany

Start bid: 250 €, estimate: 1.500 €



D. R. CONGO, LULUA

190 Small standing protective figure

wood, dark brown patina, remains of kaolin, of typical form, carved with an loincloth, oval head with a hole and a horn on top of the head, min. dam., wooden socle;

such small protective figures served the general well being, they should bring luck and beauty, should protect pregnant women and increase fertility.

H: 16,5 cm

Provenience: Joseph Christiaens, Brussels, Belgium

Wolfgang Nerlich, Munich, Germany

Start bid: 300 €, estimate: 3.000 €



D. R. CONGO, LULUA

191 Standing protective figure

wood, brown patina, remains of pigments, holding a small bowl in the left hand, circular drillings in the head area, high towering headgear, min. dam., slight traces of abrasion, base

H: 17 cm

Provenience: Vera und Wolfgang Nerlich, Munich, Germany

Start bid: 250 €, estimate: 1.200 €



D. R. CONGO, MBOLE

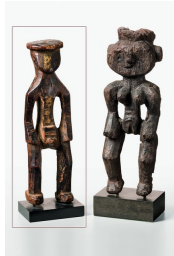
192 Female figure

wood, dark brown patina, schematized body, a broad heart-shaped face with simplified features. min. dam., traces of weathering, base; belonging to the "lilwa" secret society. The slanting, "hanging" feet as well as the posture of the body could be a hint, that a hanged person is depicted, who was killed according to a sentence of "lilwa".

H: 28,5 cm

Provenience: Peter Loebarth, Hameln, Germany
Wolfgang Nerlich, Munich, Germany

Start bid: 1.000 €, estimate: 5.000 €



D. R. CONGO, MBOLE

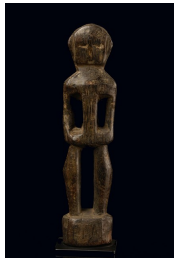
193 Male figure "okifa"

light brown wood, spotty, dark brown patina, beige pigment remains, schematized forms, an oval head without recognizable facial features, crowned by a flat headgear, hole on top of the head, min. dam., traces of abrasion, base

H: 28 cm

Provenience: Alfons Bermel, Berlin, Germany
Wolfgang Nerlich, Munich, Germany

Start bid: 500 €, estimate: 2.000 €



D. R. CONGO, MBOLE

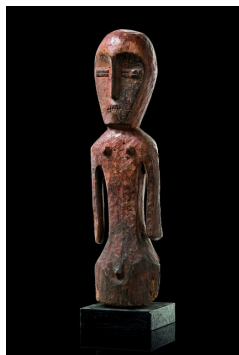
194 Standing figure

wood, partly shiny, dark brown patina, remains of pigments, without feet rising from a high base, schematized form and simplified facial features, min. dam., slight traces of abrasion, minor missing parts, base

H: 29 cm

Provenience: Peter Loebarth, Hameln, Germany
Vera und Wolfgang Nerlich, Munich, Germany

Start bid: 200 €, estimate: 1.600 €



D. R. CONGO, METOKO

195 Male half figure "ntanda"

wood, dark brown patina, camwood powder, bicolored face halves, the body painted with dots, slightly dam., missing parts, traces of insect caused damage, cracks, block-like base; the male figure "ntanda" and the female "itea" are used in initiation rites and are also brought out to keep the peace during disputes. "Ntanda" and "itea" are used as temporary receptacles for the souls of the departed during important funerals and are then broken and left in the forest.

H: 56 cm

Provenience: Peter Loebarth, Hameln, Germany
Alfons Bermel, Berlin, Germany
Vera und Wolfgang Nerlich, Munich, Germany

Start bid: 1.000 €, estimate: 5.000 €



D. R. CONGO, NDAAKA/BALI

196 Mask

wood, shiny patina, polychrome paint, of oval form, face halves dyed in different colours, painted with dots, circular pierced eyes, an open mouth with separate worked teeth, pierced around the rim, min. dam., slight traces of abrasion

H: 23,5 cm

Provenience: Peter Loebarth, Hameln, Germany
Wolfgang Nerlich, Munich, Germany

Start bid: 400 €, estimate: 3.000 €



D. R. CONGO, NDAAKA

197 Mask

wood, matt patina, of oval form, the facial plane divided in quarters dyed in red resp. white, pierced around the rim, min. dam., minor missing parts, slight traces of abrasion, base

H: 23 cm

Provenience: Peter Loebarth, Hameln, Germany

Wolfgang Nerlich, Munich, Germany

Start bid: 400 €, estimate: 2.500 €



D. R. CONGO, PENDE

198 Maske "phumbu"

wood, black paint, kaolin, plant fibres, tribe-typical facial features, raffia bonnet with three cone-like projections, pierced around the rim, min. dam., traces of insect caused damage and abrasion, base;

present mask represents a chief and was used during masquerades supposed to entertain the village inhabitants. When the "phumbu" mask appeared, it was frequently accompanied by an assistant wearing a "tundu" mask. His task was to find a good seat for the chief with the best possible view.

H: 53 cm

Provenience: Peter Loebarth, Hameln, Germany

Wolfgang Nerlich, Munich, Germany

Start bid: 650 €, estimate: 3.500 €



D. R. CONGO, PENDE

199 Mask "phumbu"

wood, matt patina, polychrome paint, raffia bonnet with four cone-like projections, min. dam., paint rubbed off, base;

present mask represents a chief and was used during masquerades supposed to entertain the village inhabitants. When the "phumbu" mask appeared, it was frequently accompanied by an assistant wearing a "tundu" mask. His task was to find a good seat for the chief with the best possible view.

H: 40,5 cm

Provenience: Peter Loebarth, Hameln, Germany

Vera und Wolfgang Nerlich, Munich, Germany

Start bid: 350 €, estimate: 2.000 €



D. R. CONGO, PENDE

200 Mask "mbuya"

wood, polychrome paint, marked by continuous brows, eyes with hanging lids and the typical "snub nose", scarification marks "mifunyi" on forehead and cheeks, raffia bast bonnet, min. dam., cracks, slight traces of abrasion, base;

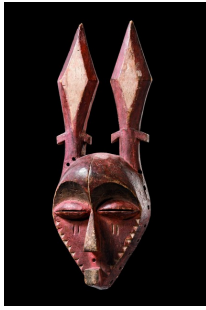
masks of the Pende were used to worship the chief and for initiation rites or for sacred purposes of the priests. In particular, this artist has captured the "bedroom eyes" ("zanze"), believed essential to women's power over men.

H: 28,5 cm

Provenience: German Private Collection

Vera und Wolfgang Nerlich, Munich, Germany

Start bid: 600 €, estimate: 2.500 €



D. R. CONGO, PENDE

201 Horned mask "giphogo"

wood, red pigment, kaolin, a heart-shaped facial plane with a zig-zag beard in relief, horns in shape of lance tips, pierced around the rim, min. dam., slight traces of abrasion, minor missing parts;

the Pende people live at the left bank of the Kasai river. They became well known for their big masks, like "pumpu" and "giphogo", rather than for their triangular miniature masks.

H: 41 cm

Provenience: Peter Loebarth, Hameln, Germany
Wolfgang Nerlich, Munich, Germany

Start bid: 350 €, estimate: 2.000 €



D. R. CONGO, PENDE

202 Mask "munyangi giphogo"

wood, brown patina, kaolin (encrusted in some areas), small traces of turquoise pigment, small heart-shaped facial plane with flat mirror-shaped projection on top and abundant grass-fibre beard, skin scarification marks, drilled hole underneath the nose, slightly dam.; the "munyangi" masks are worn as visors, away from the face starting from the forehead, freeing the nose and the eyes. They are doted with an imposing headdress which enables the small mask to be fitted on the forehead of the dancer. All these masks are linked to the chief's power.

H: 28 cm

Provenience: Peter Loebarth, Hameln, Germany
Vera und Wolfgang Nerlich, Munich, Germany

Start bid: 150 €, estimate: 1.600 €



D. R. CONGO, PENDE

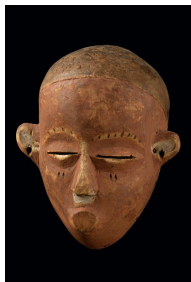
203 Passport mask

wood, greyish brown patina, kaolin, drilled holes around the rim, slightly dam., minor missing parts at the back of the rim, metal base

H: 13,5 cm

Provenience: Alfons Bermel, Berlin, Germany
Vera und Wolfgang Nerlich, Munich, Germany

Start bid: 100 €, estimate: 1.000 €



D. R. CONGO, PENDE

204 Small mask "pota"

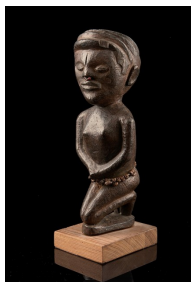
wood, kaolin, brown paint, red dyed facial plane, narrow slit bean-shaped eyes, a closed disc-shaped flattened mouth, slightly dam., waterspots, base;

"pota" is a forehead mask, secured in place by a pillbox hat. It performs with great variety and often executes manoeuvres associated with other masks. "Pota" often takes over duties from "kipoko" so that it is described as "first minister" among the village masks.

H: 19,5 cm

Provenience: Vera und Wolfgang Nerlich, Munich, Germany

Start bid: 150 €, estimate: 900 €



D. R. CONGO, PENDE

205 Kneeling figure

wood, reddish brown patina with traces of black paint, stylized in form, a block-like body, kneeling on thin legs with tapering knees, crowned by a heavy-weighted head with disc-shaped coiffure, round scarification marks and linear incised tattoos on the face, plant fibre belt, nose ornament, slightly dam., minor missing parts at the coiffure, crack (at the back of the head), paint rubbed off (coiffure), base

H: 27 cm

Provenience: Vera und Wolfgang Nerlich, Munich, Germany

Start bid: 200 €, estimate: 1.500 €



D. R. CONGO, PENDE (OST)

206 Mask "kindombolo"

wood, red pigment, blackish brown paint, remains of kaolin, the flat facial plane coated with three rows of drilled holes, flanking a bold nose, a projecting beard underneath, typical "shaved" hairline, slightly dam., base; the drilled holes symbolize scars caused by smallpox. "Kindombolo's" scars evoke his character since many argue that survivors of smallpox lose all respect for physical danger or social censure. Called "cruel" because he carries a whip, "kindombolo" maintains order on the dance floor but delights in outlandish and vulgar surprises.

H: 24 cm

Provenience: Alfons Bermel, France
Vera und Wolfgang Nerlich, Munich, Germany

Start bid: 200 €, estimate: 1.000 €



D. R. CONGO, RUNGU

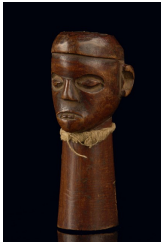
207 Mask

wood, shiny brown patina, black paint, of oval vaulted form with slightly asymmetrical facial features and elongated chin, blackened coiffure along the hairline ornamented with drilled holes, pierced around the rim, fine cracks, minor missing parts, slight traces of abrasion, base; some masks, collected in the area of the Rungu, belonged to a member of a voluntary association, but their exact use is not known since they were not observed in context.

H: 27 cm

Provenience: Helmut Zake, Heidelberg, Germany
Wolfgang Nerlich, Munich, Germany

Start bid: 700 €, estimate: 4.500 €



D. R. CONGO, RUNGU

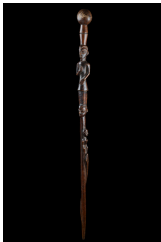
208 Head sculpture

wood, shiny brown patina, remains of black paint, a band of fabric around the long neck, open mouth with visible teeth, min. dam., slight traces of abrasion

H: 9 cm

Provenience: Portugese Collection, Lisbon
Vera und Wolfgang Nerlich, Munich, Germany

Start bid: 80 €, estimate: 900 €



D. R. CONGO, RUNGU

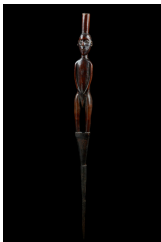
209 Dignitary staff

wood, shiny brown patina, carved with a snake, a small relief figure, a human head, on top a half figure and knob-shaped ending, min. dam., small missing parts, slight traces of abrasion, fine cracks

L: 98 cm

Provenience: Vera und Wolfgang Nerlich, Munich, Germany

Start bid: 150 €, estimate: 900 €



D. R. CONGO, RUNGU

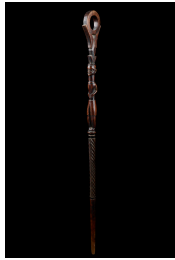
210 Dignitary staff

wood, shiny brown patina, blackened in parts, iron spit at the bottom, surmounted by a standing male figure, min. dam., small missing parts, slight traces of corrosion

H: 73 cm

Provenience: Vera und Wolfgang Nerlich, Munich, Germany

Start bid: 150 €, estimate: 800 €



D. R. CONGO, RUNGU

211 Dignitary staff

wood, shiny dark brown patina, carved with a standing, smiling figure dressed with shorts, surmounted by a fork-shaped ending with an open worked circle inbetween, min. dam., slight traces of abrasion;
staffs with heads were probably used by dignitaries as a sign of office.

L: 85,5 cm

Provenience: Vera und Wolfgang Nerlich, Munich, Germany

Start bid: 100 €, estimate: 800 €



D. R. CONGO, SALAMPASU

212 Face mask "kasangu" of "ibuku" society

wood, of oval form, a broad, bulging forehead separated from the deepened, triangular flattened facial plane below, the face halves dyed in red and black, alternating on the forehead, dam., minor missing parts (eyes, mouth, chin), cracks (chin), paint rubbed off, traces of insect caused damage;
the masks of the Salampasu were used for circumcision rites of the male secret societies. The number of masks a secret society owned, indicated proven courage, experience of warfare and the number of "enemy heads" that had been taken.

H: 23,5 cm

Provenience: Vera und Wolfgang Nerlich, Munich, Germany

Start bid: 300 €, estimate: 2.000 €



D. R. CONGO, SALAMPASU

213 Mask "kasangu" of "ibuku" society

wood, spotted dark brown patina, kaolin, stylized form, a bulging forehead, the triangular facial plane below concave hollowed with a projecting tapering chin, sickle-shaped pierced eyes flanking a bulky short nose, slightly dam. (nose, chin), paint rubbed off (above all at the back of the rim), coiffure of rotan bowls missing, base

H: 30 cm

Provenience: French Private Collection

Vera und Wolfgang Nerlich, Munich, Germany

Start bid: 400 €, estimate: 1.500 €



D. R. CONGO, SALAMPASU

214 Figure of a dancer

blackened wood, raffia fibers, rotan, feathers, dressed with a grass fibre skirt, wearing a "mukinka" mask and a pointed headgear, min. dam., traces of insect caused damage, base; these masked dancer figures are a later addition taken from the Chokwe.

H: 61 cm

Provenience: Peter Loebarth, Hameln, Germany

Vera und Wolfgang Nerlich, Munich, Germany

Start bid: 400 €, estimate: 2.000 €



D. R. CONGO, SHI

215 Face mask "idimu"

wood, blotched brown patina, incised scarification marks (cheeks and nosebridge), slightly dam., abrasion;

the "idimu" mask is owned collectively and is kept by an appropriate member of "yananio" or "kindi". In a major performance, the "idimu" mask is hung on a fence surrounded by the smaller, individually owned "lukwakongo" masks. "Idimu" represents the power which enables the community to enter the higher level of "bwame".

H: 26,5 cm

Provenience: Peter Loebarth, Hameln, Germany

Vera und Wolfgang Nerlich, Munich, Germany

Start bid: 350 €, estimate: 3.000 €



D. R. CONGO, SHI

216 Face mask

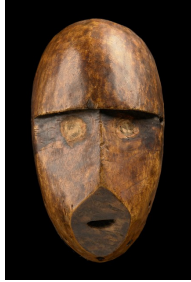
wood, reddish brown patina, kaolin, of regular hollowed form with a high projecting forehead, the facial features concentrated on a rather small area, the see holes enclosed by grooves, accentuated with kaolin, slightly dam., drilled holes in the chin area (partly broken), cracks (forhead), paint rubbed off, metal base;

ethnic group living in the area between the Tanganyika and Kivu Lake. The Shi are famous for their inventive yet pure shaped wooden beer and water vessels and their beadwork, to a lesser extent for masks.

H: 31 cm

Provenience: Vera und Wolfgang Nerlich, Munich, Germany

Start bid: 400 €, estimate: 3.000 €



D. R. CONGO, SHI

217 Apes mask

light-weighted wood, reddish brown patina, dark brown paint, abstract form, the brows separated from the facial plane in a horizontal overlapping rim, the flat face halves culminating in a vertical ridge forming the nose, mouth and chin zone flattened, slightly dam., minor missing parts (backside at the rim, edge of the brows), small traces of insect caused damage

H: 21,5 cm

Provenience: Vera und Wolfgang Nerlich, Munich, Germany

Start bid: 300 €, estimate: 1.500 €



D. R. CONGO, SONGE

218 Mask "kifwebe"

wood, dark brown patina, of narrow overlong form with a round head and a concave hollowed facial plane, narrow slit eyes, the bulky nose and a cuboid mouth widely protruding, the facial plane coated with band tattoos, pierced around the rim, dam., paint rubbed off, minor missing parts at the rim (mouth, eyes, chin, backside at the rim), rep. (breakage on the right side of the head, fixed with silver metal strips and wire, additional spread with a tar-like mass);

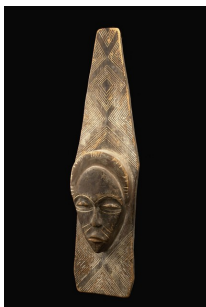
the "bifwebe" masks (sing. "kifwebe") represent a spirit being and belong to an association called "bwadi ka bifwebe". The mask is supplemented by a plaited costume and a long raffia beard. They appear at various ceremonies, as security force, or for warding off enemies in case of war. Because of the missing forehead crest, the mask is of female type "kikashi". The striped, in parts jagged pattern, presumably a hint on its origin form the eastern area of the Songe land.

H: 39,5 cm

Provenience: Peter Loebarth, Hameln, Gemany (70's)

Vera und Wolfgang Nerlich, Munich, Germany

Start bid: 2.000 €, estimate: 10.000 €



D. R. CONGO, SONGE/TETELA

219 Plankmask of "kifwebe" society

light weighted wood, middle brown patina, kaolin, narrow board with accurate incised concentric decor, accentuated with kaolin rubbed into the deepenings, a mask face with linear scarification marks and painted pupils superimposed, dam., missing parts at the rim, paint rubbed off;

presumably used as hut panel.

H: 60 cm

Provenience: Peter Loebarth, Hameln, Germany

Wolfgang Nerlich, Munich, Germany

Start bid: 400 €, estimate: 3.000 €



D. R. CONGO, SONGE

220 Mask board

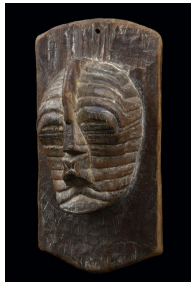
wood, brown patina, kaolin, black paint, a mask face of the "kifwebe" type superimposed in the centre, min. dam., traces of abrasion;
they have a dual function: first as a dance mask and secondly as an emblem of the "bifwebe" association to be hung to a wall or fence.

H: 34 cm

Provenience: Peter Loebarth, Hameln, Germany

Vera und Wolfgang Nerlich, Munich, Germany

Start bid: 250 €, estimate: 2.500 €



D. R. CONGO, SONGE

221 Mask board

wood, brown patina, remains of kaolin and black paint, a mask face of the "kifwebe" type superimposed in the centre, min. dam., cracks, traces of abrasion;
they have a dual function: first as a dance mask and secondly as an emblem of the "bifwebe" association to be hung to a wall or fence.

H: 29 cm

Provenience: Peter Loebarth, Hameln, Germany

Wolfgang Nerlich, Munich, Germany

Start bid: 350 €, estimate: 1.500 €



D. R. CONGO, SONGE

222 Wall mask "kifwebe"

wood, matt patina, polychrome paint, carved on a flat rounded board, protruding rectangular mouth and a high forehead comb, min. dam., cracks, slight traces of abrasion, on metal base

H: 34 cm

Provenience: Peter Loebarth, Hameln, Germany

Vera und Wolfgang Nerlich, Munich, Germany

Start bid: 350 €, estimate: 2.000 €



D. R. CONGO, SONGE

223 Miniature mask "kifwebe"

wood, dark brown patina, remains of pigments, raised forehead and nose ridge, a long beard of plant fibres underneath, min. dam., slight traces of abrasion

H: 14,5 cm

Provenience: Peter Loebarth, Hameln, Germany

Wolfgang Nerlich, Munich, Germany

Start bid: 200 €, estimate: 1.500 €



D. R. CONGO, SONGE

224 Male power figure "nkisi"

wood, matt middle brown patina, loincloth of animal skin, fixed by cord, hole in the parting with inserted magical loading, slightly dam., cracks;
the magical figures ("mankisi"; sing. - "nkisi") were not conceived as objects of display but as intimate devices used for protection, healing or therapy. The determining factor in their assessment is not visual but is rather dependent on the magical ingredients (= "bishimba"). The smaller figures belong to individual persons, while the big ones are the property of the whole village. In their function they often correspond to the protective or sacred figures of the Christian and other religions. Sometimes they also fulfil malignant goals: they heal and destroy, protect and attack.

H: 20,5 cm

Provenience: Vera und Wolfgang Nerlich, Munich, Germany

Start bid: 100 €, estimate: 900 €



D. R. CONGO, SONGE

225 Two power figures

wood, middle brown patina, a) h: 12 cm, eyes with metal inlay, opening in the parting, incised scarifications on breast and back, dam., missing parts (left upper arm, right foot tip), metal plate; b) h: 14 cm, bullet casing in the head, brass tag in the belly, drilled ear holes, dam., missing parts, cracks (head, base), block-like base

Provenience: Vera und Wolfgang Nerlich, Munich, Germany

Start bid: 150 €, estimate: 900 €



D. R. CONGO, SONGE

226 Two friction oracles "katadora"

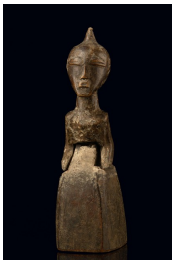
wood, brown patina, both with square open worked body and anthropomorphic head, min. dam., fine cracks, slight traces of abrasion

H: 13 cm resp. 13,5 cm

Provenience: Joseph Christiaens, Brussels, Belgium

Vera und Wolfgang Nerlich, Munich, Germany

Start bid: 250 €, estimate: 1.000 €



D. R. CONGO, SONGE

227 Small power figure

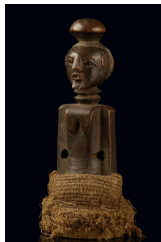
wood, partly encrusted brown patina, remains of kaolin, trapezoid lower body, oval head with simplified facial features, crowned by a thorn-like projection, rep. (middle), min. dam., slight traces of abrasion

H: 19 cm

Provenience: Peter Loebarth, Hameln, Germany

Vera und Wolfgang Nerlich, Munich, Germany

Start bid: 150 €, estimate: 1.300 €



D. R. CONGO, SONGE

228 Power half figure "nkisi"

wood, slightly shiny brown patina, dressed with a loincloth made from plant fibres, circular drillings, knob-shaped headgear, min. dam., cracks, slight traces of abrasion

H: 20,5 cm

Provenience: Peter Loebarth, Hameln, Germany

Vera und Wolfgang Nerlich, Munich, Germany

Start bid: 200 €, estimate: 1.500 €



D. R. CONGO, SONGE

229 Neckrest

wood, reddish brown patina, remains of black paint, of rectangular waisted form, slightly vaulted for placing the head a bit more comfortable, the narrow sides carved with anthropomorphic heads, slightly dam., cracks, minor missing parts, paint rubbed off

B: 17,5 cm

Provenience: Vera und Wolfgang Nerlich, Munich, Germany

Start bid: 100 €, estimate: 600 €



D. R. CONGO, SUKU

230 Power figure

wood, dark brown patina, rising from slightly bent legs, dressed with an apron, a package of magical mass including feathers attached to the upper arm, the cavity in the breast filled with magical mass, a string of glass beads with small animal horns around the neck, the head showing tribe-typical facial features, min. dam., slight traces of abrasion, metal plate; probably a magical figure called "phuungu". These figures served as containers for protective magical power exercised by the experts against illness, to avenge sorcery and for supernatural assistance in hunting.

H: 52,5 cm

Provenience: Ludwig Bretschneider, Munich, Germany

Vera und Wolfgang Nerlich, Munich, Germany

Start bid: 1.200 €, estimate: 6.500 €



D. R. CONGO, SUKU

231 Standing female figure "biteki koshi"

wood, reddish brown patina, red pigment, a crude carved body, small drilled holes in head, ears, forearms and between the legs ("cryptofetish") for insertion of magical substances, slightly dam., cracks (backside), block-like base; commemorative statues and ancestral figures like the present one are considered to be abodes for the invisible benevolent forces of the ancestors. They are used by healers, diviners and clan chiefs in rituals pertaining to the ancestral cult.

H: 20 cm

Provenience: Vera und Wolfgang Nerlich, Munich, Germany

Start bid: 350 €, estimate: 2.000 €



D. R. CONGO, SUKU

232 Female figure

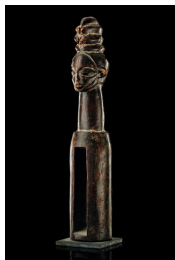
wood, dark, reddish brown patina, cylindrical trunk with the arms carved close to the body, hole on top of the head, min. dam., small missing parts (base), cracks, slight traces of abrasion, metal base

H: 29,5 cm

Provenience: German Private Collection

Vera und Wolfgang Nerlich, Munich, Germany

Start bid: 400 €, estimate: 1.500 €



D. R. CONGO, SUKU

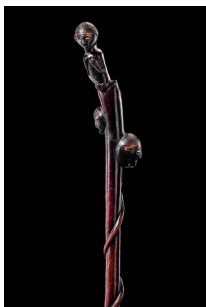
233 Slit drum

wood, dark brown patina, remains of kaolin, in the shape of an armless half figure with slit-like deepened corpus, min. dam., slight signs of abrasion, fissures, metal plate; the diviner uses this drum to accompany the singings initiating the oracle. The rectangular opening was not just a resonator, it could contain magical mass as well.

H: 43,5 cm

Provenience: Vera und Wolfgang Nerlich, Munich, Germany

Start bid: 250 €, estimate: 1.500 €



D. R. CONGO, TABWA

234 Dignitary staff

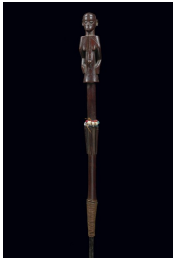
wood, red- and blackish brown shiny patina, handle in shape of a human half figure, an anthropomorphic head on either side, eyes with metal inlay, iron spout, slightly dam., paint rubbed off; the staff presumably belonged to a chief or diviner. The two faces in opposite directions refer to the ability to see both past and future.

L: 132 cm

Provenience: Peter Loebarth, Hameln, Germany

Wolfgang Nerlich, Munich, Germany

Start bid: 450 €, estimate: 3.500 €



D. R. CONGO, TABWA

235 Dignitary staff

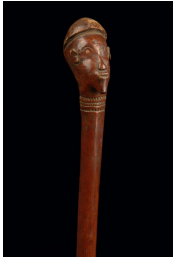
wood, shiny brown patina, copper wire, string of glass beads, round staff with metal spout, crowned by a female half figure, min. dam., cracks, traces of corrosion; presumably belonging to the prestige objects of a chief.

H: 136,5 cm

Provenience: Peter Loebarth, Hameln, Germany (1991)

Vera und Wolfgang Nerlich, Munich, Germany

Start bid: 150 €, estimate: 2.000 €



D. R. CONGO, TABWA

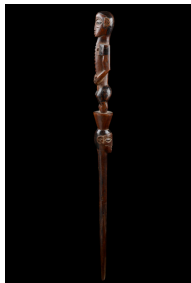
236 Dignitary staff

wood, reddish brown patina, knob in shape of an anthropomorphic head with chin beard and incised tattoos on the cheeks, band ornament with notched zigzag decor around the neck, slightly dam., cracks, inserted eyes (missing on the left), traces of usage/strong abrasion at the back of the head, base

H: 82 cm

Provenience: Vera und Wolfgang Nerlich, Munich, Germany

Start bid: 200 €, estimate: 1.200 €



D. R. CONGO, TABWA

237 Dignitary staff

wood, shiny brown patina, blackened in parts, carved with a human head, on top a standing figure rising from a conical base, min. dam., missing parts, slight traces of abrasion;

the staff presumably belonged to a chief or diviner. The two faces in opposite directions refer to the ability to see both past and future.

L: 75 cm

Provenience: Vera und Wolfgang Nerlich, Munich, Germany

Start bid: 150 €, estimate: 800 €



D. R. CONGO, TABWA

238 Three figures

wood, a) standing female figure, Tabwa/Rungu, h: 24 cm, drilled hole in the head, grooved nose ridge, eyes in concentric rings, cross-shaped tattoos on the cheeks, slightly dam., crack, paint rubbed off, metal plate; b) standing figure with shovel-like big hands, h: 24,5 cm, flat head with coiffure in lattice pattern, slightly dam., rep. (right leg), old collection number "262", c) figure with two-coloured coiffure, h: 19,5 cm, vertical incisions on the cheeks, slightly dam., metal plate

Provenience: a) Joseph Christiaens, Brussels, Belgium

Vera und Wolfgang Nerlich, Munich, Germany

Start bid: 200 €, estimate: 2.000 €



D. R. CONGO, TABWA

239 Standing male figure in colon style

wood, brown patina, black paint in some areas, carved with shorts and boots, cap-like coiffure with drilled hole in the parting for insertion of magical substances, spectacle-like eyes, slightly dam., metal plate

H: 25,4 cm

Provenience: Peter Loebarth, Hameln, Germany

Vera und Wolfgang Nerlich, Munich, Germany

Start bid: 400 €, estimate: 1.800 €



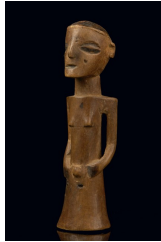
D. R. CONGO, TABWA

240 Three miniature figures

wood, brown patina, traces of black paint in some areas, a) standing female figure, h: 12,5 cm, brows arranged in double bows, vertical forehead ridge, slightly dam., base; b) half figure with coiffure in shape of a billed cap, h: 14 cm, rich patina, cavity in the head, slightly dam., cracks, base; c) standing female figure, h: 14 cm, tonsure-like blackened coiffure, slightly dam., cracks, paint rubbed off, base

Provenience: b) Peter Loebarth, Hameln, Germany
Vera und Wolfgang Nerlich, Munich, Germany

Start bid: 200 €, estimate: 1.400 €



D. R. CONGO, TABWA

241 Small half figure

wood, brown patina, blackened in parts, face, hands and scarification marks accentuated by pokerwork, hole on top of the head with remains of magical mass, min. dam.

H: 13,5 cm

Provenience: Peter Loebarth, Hameln, Germany
Vera und Wolfgang Nerlich, Munich, Germany

Start bid: 100 €, estimate: 900 €



D. R. CONGO, TEKE

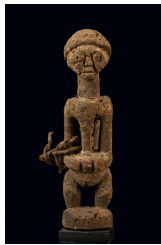
242 Miniature power figure "biteki"

wood, middle brown patina, the body coated with a package of magical mass, tribe-typical headgear, min. dam., small missing parts, acrylic base

H: 12,5 cm

Provenience: Peter Loebarth, Hameln, Germany
Vera und Wolfgang Nerlich, Munich, Germany

Start bid: 250 €, estimate: 1.000 €



D. R. CONGO, TETELA

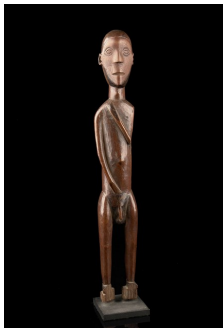
243 Small female power figure

wood, encrusted greyish brown patina, wearing a thin leather strap wrapped around the left arm, simplified facial features, min. dam., traces of insect caused damage

H: 16 cm

Provenience: Peter Loebarth, Hameln, Germany
Vera und Wolfgang Nerlich, Munich, Germany

Start bid: 100 €, estimate: 1.000 €



D. R. CONGO, TUMBWE

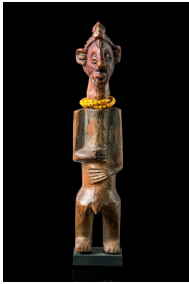
244 Standing male figure

wood, reddish brown patina, black paint in some areas, a high-towering body with elongated limbs, drilled hole on top of the head for insertion of magical mass, dam., missing parts (left upper arm, both foot tips and base), old place of repair (a small wooden piece fitted in the left thigh), metal plate; the Tumbwe live at the southwestern river banks of Lake Tanganyika. Few sculptures are known from this area and oral history says that some were made by Luba carvers at the request of the Tumbwe chief Lusinga.

H: 46 cm

Provenience: Vera und Wolfgang Nerlich, Munich, Germany

Start bid: 200 €, estimate: 1.500 €



D. R. CONGO, YAKA

245 Small male power figure "phuungu"

wood, reddish brown patina, necklace with yellow glass beads, simplified body, both hands resting on the abdomen, the narrow head carved with large ears and the typical nose, slightly dam., insect caused missing part at the coiffure, base; such figures served as containers for protective magical power exercised by the experts against illness, to avenge sorcery and for supernatural assistance in hunting.

H: 22 cm

Provenience: Vera und Wolfgang Nerlich, Munich, Germany

Start bid: 450 €, estimate: 2.500 €



D. R. CONGO, YAKA

246 Standing female power figure

wood, light brown patina, dark brown patina at the coiffure, the angled arms carved close to the body with the hands amalgamated in front of the breast, stylized facial features with linear incised tattoos underneath the eyes, small drilled holes in head, ears and anus ("cryptofetish"), slightly dam., coiffure, base

H: 20 cm

Provenience: Joseph Christiaens, Brussels, Belgium

Vera und Wolfgang Nerlich, Munich, Germany

Start bid: 300 €, estimate: 2.000 €



D. R. CONGO, YAKA

247 Three miniature figures

wood, dark brown patina, a) magical figure "mbwoolo", h: 12,5 cm, armless trunk, legs fused; b) pendant figure in shape of a standing male, rising from a conical-shaped base with central drilling, slightly dam., cracks, partly spread with mass, c) half figure, Holo, Angola, h: 14,5 cm, v-shaped arms; metal bases

Provenience: a) + c) Peter Loebarth, Hameln, Germany

Vera und Wolfgang Nerlich, Munich, Germany

Start bid: 200 €, estimate: 1.600 €



D. R. CONGO, YAKA

248 Mask

light brown wood, mat, dark brown patina, of flat and oval form with a pierced nose and a teeth-showing mouth, a plug-shaped handle for support at the lower rim, min. dam., paint rubbed off in some parts, metal base; probably part of a mask "ndeemba" used at circumcision rites for young boys, symbolizing fertility and virility.

H: 41,5 cm

Provenience: Vera und Wolfgang Nerlich, Munich, Germany

Start bid: 400 €, estimate: 2.000 €



ANGOLA, CHOKWE

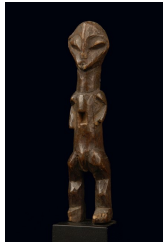
249 Mask representing a foreigner "katoyo"

wood, dyed in red, small traces of black paint, characterized by horizontal brows, angular nose and a broad mouth, skin scarification marks, forehead tattoo, drilled holes around the rim, slightly dam., missing parts backside, original inserted teeth now missing, base

H: 23 cm

Provenience: Vera und Wolfgang Nerlich, Munich, Germany

Start bid: 200 €, estimate: 2.000 €



ANGOLA, HOLO

250 Small standing amulet figure

wood, shiny dark brown patina, shortened arms, rectangular cavity in the chest, drilling in the area of the neck, min. dam., fissures, minor missing parts, slight traces of abrasion, base
H: 15 cm

Provenience: Peter Loebarth, Hameln, Germany
Vera und Wolfgang Nerlich, Munich, Germany

Start bid: 150 €, estimate: 1.000 €



ANGOLA, LUENA

251 Mask

light brown wood, matt brown patina, with regular facial features and tattoos corresponding to the prevailing ideal of beauty, abundant coiffure made from plant fibre cord, beaded ornaments, min. dam., slight traces of abrasion, base

H: 25 cm

Provenience: Peter Loebarth, Hameln, Germany
Vera und Wolfgang Nerlich, Munich, Germany

Start bid: 600 €, estimate: 5.000 €



ANGOLA, LUENA

252 Mask "mwana phwevo"

wood, brown and black patina, with regular facial features and rich tattoos corresponding to the prevailing ideal of beauty, abundant coiffure made from plant fibre cord, beaded ornaments, remains of a costume backside, pierced around the rim, min. dam., base; the "mwana phwevo" masks were danced by men. They appear on various festive occasions in order to amuse the village people, especially women, with their charming dances.

H: 22,5 cm

Provenience: Peter Loebarth, Hameln, Germany
Wolfgang Nerlich, Munich, Germany

Start bid: 650 €, estimate: 3.000 €



ANGOLA, LUENA

253 Mask

wood, shiny brown patina, of oval form with pointed chin, elaborate scarifications in the area of the forehead and the temples, pierced around the rim, min. dam., minor missing parts, slight traces of abrasion, base

H: 25 cm

Provenience: Peter Loebarth, Hameln, Germany
Vera und Wolfgang Nerlich, Munich, Germany

Start bid: 350 €, estimate: 3.000 €



ANGOLA, LUENA

254 Mask "mwana phwevo"

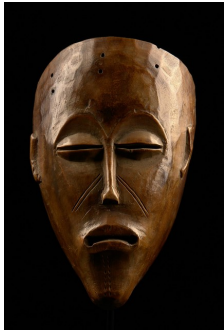
wood, shiny spotty patina, showing tribe-typical facial features, scarifications, double-curved eye brows and accentuated cheeks, pierced around the rim, min. dam., slight traces of abrasion, on base;

the Luena are an ethnic group in the border territory between Angola, Zambia and the Democratic Republic of Congo. In Angola, they are named after the river of the same name, and in the north-west of Zambia, they are known as Lovale.

H: 28 cm

Provenience: Peter Loebarth, Hameln, Germany
Wolfgang Nerlich, Munich, Germany

Start bid: 400 €, estimate: 2.000 €



ANGOLA, LUENA

255 Mask "mwana phwevo"

wood, honey brown patina, triangular facial plane with long chin, arching brows with bean-shaped narrow slit eyes below, the oval mouth with pierced corners, pointed and linear incised scarification marks, slightly dam., minor missing part at the back of the rim, metal base;

the name of the mask "young woman" refers to a mythic female person, who died young of age. The masquerade should remind of the painful loss.

H: 22 cm

Provenience: Mon Steyaert, Brussels, Belgium
Vera und Wolfgang Nerlich, Munich, Germany

Start bid: 250 €, estimate: 1.800 €



ANGOLA, LUENA

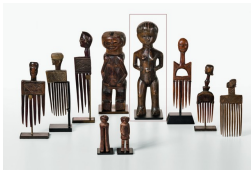
256 Mask "mwana phwevo"

wood, shiny spotty patina, with regular facial features and rich tattoos corresponding to the prevailing ideal of beauty, pierced around the rim, min. dam., fine cracks, slight traces of abrasion

H: 24 cm

Provenience: Inge Hett, Berlin, Germany
Vera und Wolfgang Nerlich, Munich, Germany

Start bid: 200 €, estimate: 1.700 €



ANGOLA, LUENA

257 Standing female figure

wood, shiny brown patina, remains of pigments, fine scarification marks, drilled eyes, earholes and hole on top of the head, cracks, missing parts (foot tips), slight traces of abrasion, metal plate;

the Luena have a matriarchic society system, which is why most of their sculptures are females representing protective spirits or female ancestors. The latter used to assist male diviners in their battles against the harmful or anti-social elements that threatened the community, because women were believed to have more influence in the manipulation of the supernatural.

H: 26 cm

Provenience: Vera und Wolfgang Nerlich, Munich, Germany

Start bid: 150 €, estimate: 900 €



ANGOLA, MBUNDA

258 Mask "sachihongo"

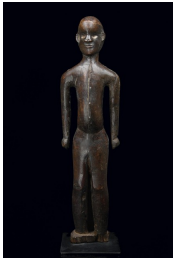
light brown wood, matt dark brown patina, wide and oval form, a broad forehead with deeply etched furrows, cross-shaped scarification marks on the cheeks, open mouth with separate worked teeth, pierced around the rim, min. dam., missing parts, traces of abrasion, base;

"Sachihongo" is the incarnation of a hunter, but is depicted as chief and sooth-sayer as well. The masks ("makisi") represent ancestor spirits. They appear after the circumcision of young boys, during times of convalescence in the bush camps, where they dance, accompanied by the songs of the male and female audience. The mask is completed by a crown of feathers, fiber beard and a net suit, made of the fibers of the "mushamba" tree.

H: 33,5 cm

Provenience: Peter Loebarth, Hameln, Germany
Vera und Wolfgang Nerlich, Munich, Germany

Start bid: 400 €, estimate: 4.000 €



EAST AFRICA

259 Standing figure

wood, shiny brown patina, a jacket indicated by vertical incision and metal tags, the eyes inset with metal sheet, rep. (left arm), missing parts (base), cracks, slight traces of abrasion, base

H: 50,5 cm

Provenience: Peter Loebarth, Hameln, Germany

Vera und Wolfgang Nerlich, Munich, Germany

Start bid: 300 €, estimate: 2.500 €



EAST AFRICA

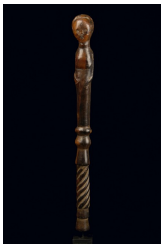
260 Two objects

a) a calabash with wooden stopper in form of a human head with attached glass beads and cowrie snails, min. dam., slight traces of usage, h: 14 cm; b) a magical horn of the Nyamwezi, Tanzania with plant fibre cuff, attached beads and peg in the shape of a human head with real hair, h: 27,5 cm, min. dam., cracks, slight traces of abrasion

Provenience: a) Lempertz Brussels, 25. April 2009, lot 125

Vera und Wolfgang Nerlich, Munich, Germany

Start bid: 200 €, estimate: 1.300 €



EAST AFRICA

261 Dignitary staff

wood, shiny brown patina, upper part in form of stylized half figure, the eyes inset with miniature beads, min. dam., slight traces of abrasion, base

H: 44 cm

Provenience: Vera und Wolfgang Nerlich, Munich, Germany

Start bid: 100 €, estimate: 900 €



EAST AFRICA

262 Comb

wood, brown patina, seven teeth, the handle decorated with incised linear ornaments, crowned by a small standing figure, min. dam., slight traces of abrasion

H: 24 cm

Provenience: Vera und Wolfgang Nerlich, Munich, Germany

Start bid: 60 €, estimate: 800 €



TANZANIA

263 Two standing figures

wood, brown patina, a) a male figure of the Sukuma, with carved belt and pierced pupils, min. dam., cracks, base, H: 20 cm; b) a female figure of the Pare, wearing a red necklace, min. dam., slight traces of abrasion, base, h: 20 cm

Provenience: b) Peter Loebarth, Hameln, Germany

Vera und Wolfgang Nerlich, Munich, Germany

Start bid: 150 €, estimate: 1.200 €



TANZANIA, GOGO

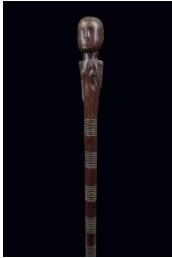
264 Club "knobkerrie"

wood, dark brown patina, spherical club-head, carved with anthropomorphic face and crested coiffure, min. dam., minor missing parts, base

H: 49 cm

Provenience: Ingo Evers, Bonn, Germany
Vera und Wolfgang Nerlich, Munich, Germany

Start bid: 80 €, estimate: 900 €



TANZANIA, KAGURU

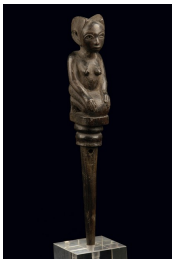
265 Dignitary staff

wood, shiny brown patina, round handle with iron spout, the upper part carved with a female half figure showing tribe-typical facial features and coiffure, min. dam., minor missing parts

H: 123 cm

Provenience: Peter Loebarth, Hameln, Germany (1989)
Vera und Wolfgang Nerlich, Munich, Germany

Start bid: 150 €, estimate: 2.000 €



TANZANIA, KWERE

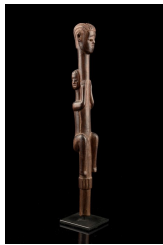
266 Fly whisk

wood, dark brown patina, handle in form of a kneeling female figure, pierced pupils, delicate carved bipartite coiffure, animal tail missing, min. dam., slight traces of abrasion, base

H: 31,5 cm

Provenience: Peter Loebarth, Hameln, Germany
Vera und Wolfgang Nerlich, Munich, Germany

Start bid: 80 €, estimate: 1.000 €



TANZANIA, LUGURU

267 Top of a dignitary staff

wood, reddish brown patina, round staff, carved with a head, a second figure backside, with arms and legs embracing the staff, pierced eyes and grooved coiffures, drilled hole on top of the head for insertion of magical substances, slightly dam., on metal base

H: 32,5 cm

Provenience: Vera und Wolfgang Nerlich, Munich, Germany

Start bid: 100 €, estimate: 1.000 €



TANZANIA, MAKONDE

268 Colon mask "lipiko"

wood, polychrome paint, European facial features, scarification marks in the area of the forehead and the cheeks, min. dam., minor missing parts, traces of insect caused damage; "lipiko" masks appeared at initiation celebrations. They were worn by the young initiates "vaali" at the "mapiko" masquerade. They depict women rather than men and were kept in special sacred mask houses outside the village. Women were not allowed to see them.

H: 22 cm

Provenience: Peter Loebarth, Hameln, Germany
Vera und Wolfgang Nerlich, Munich, Germany

Start bid: 350 €, estimate: 2.000 €



TANZANIA, MAKONDE

269 Mask

terracotta, slightly shiny patina, round form, pierced eyes and mouth, enclosed by C-shaped ears, min. dam., minor missing parts, slight traces of abrasion

H: 25,5 cm

Provenience: Peter Loebarth, Hameln, Germany
Vera und Wolfgang Nerlich, Munich, Germany

Start bid: 200 €, estimate: 1.600 €



TANZANIA, NYAMWEZI

270 Standing male figure

wood, blackish brown, in the head area reddish brown patina, the feet slightly turned inward, the trapezoid upper part of the body provided with broad shoulders and proportionally short arms, the spherical head with receding chin marked by horizontal brows and small eyes with shell inlay, slightly dam., cracks, paint rubbed off, block-like base

H: 46 cm

Provenience: Vera und Wolfgang Nerlich, Munich, Germany

Start bid: 500 €, estimate: 4.500 €



TANZANIA, PARE

271 Standing figure

wood, shiny brown patina, black paint remains, massive round head with large ears, the eyes inset with white miniature glass beads, cavity underneath, min. dam., small missing parts (foot tips), cracks, base;

its a special characteristic of this region to wrap small wooden or clay figures in fabric or leather, and a second characteristic is to provide them with holes for insertion of magical substances. The figures have two functions: they were used as media for educating young people during initiation. The second function is their usage for practices of ritual healers and sooth sayers.

H: 21 cm

Provenience: Peter Loebarth, Hameln, Germany
Vera und Wolfgang Nerlich, Munich, Germany

Start bid: 400 €, estimate: 1.800 €



TANZANIA, PARE

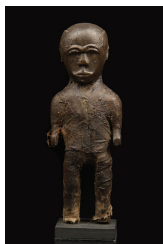
272 Standing pair of figures

wood, slightly encrusted blackish brown patina, simple bodies with slender closed contours, closely wrapped in fabric, which is soaked with blackish mass, just the faces left free, min. dam., metal bases

H: 20,5 cm resp. 21 cm

Provenience: Peter Loebarth, Hameln, Germany
Vera und Wolfgang Nerlich, Munich, Germany

Start bid: 150 €, estimate: 1.500 €



TANZANIA, PARE

273 Small standing figure

wood, dark brown patina, the body closely wrapped in fabric saturated with blackish mass, min. dam., slight traces of abrasion, base

H: 17,5 cm

Provenience: Peter Loebarth, Hameln, Germany (1981)
Wolfgang Nerlich, Munich, Germany

Start bid: 80 €, estimate: 500 €



TANZANIA, PARE

274 Title staff

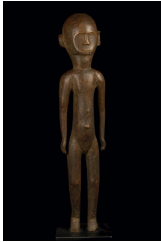
wood, blackish patina, the shaft elaborate decorated with diagonal grooves, crowned by an artificial carved bird head with open beak, small monkey's head with grotesque features and bowl-shaped projection, drilled hole for suspension, slightly dam., base

H: 37,5 cm

Provenience: Lempertz Brussels, 25. April 2009, lot 121

Vera und Wolfgang Nerlich, Munich, Germany

Start bid: 200 €, estimate: 1.000 €



TANZANIA, SUKUMA

275 Standing figure

wood, blackish brown patina, slender high towering body, spherical head with flat chin and big c-shaped ears, opening in the parting for insertion of magical material, slightly dam., cracks (face), missing parts (left hand), paint rubbed off, rep. (left foot), metal plate

H: 69 cm

Provenience: Vera und Wolfgang Nerlich, Munich, Germany

Start bid: 200 €, estimate: 1.800 €



TANZANIA, SUKUMA

276 Face mask

wood, dark brown patina, of hollowed form with a flat sloping head, expressive forms, the rectangular pierced eyes flanked by big half-circular vaulted ears, slightly dam. (ears, nose tip), crack (chin right hand side), missing parts (nose), metal base

H: 29 cm

Provenience: Vera und Wolfgang Nerlich, Munich, Germany

Start bid: 350 €, estimate: 1.500 €



TANZANIA, SUKUMA

277 Mask

wood, dark brown patina, broad facial plane with pierced eyes and mouth, pierced around the rim, rep. (both sides), slight traces of abrasion;

it is suggested that the masks of the Sukuma might also have been used during the same events as the large puppets, e.g. in dance competitions, where two groups perform simultaneously for a larger audience.

H: 27,5 cm

Provenience: Vera und Wolfgang Nerlich, Munich, Germany

Start bid: 200 €, estimate: 1.300 €



TANZANIA, ZIGUA

278 Face mask

wood, black patina, of oval hollowed form, rectangular pierced eyes and mouth, incised arrow-shaped scarification marks on the cheeks, metal tags, originally inserted teeth now missing, slightly dam., missing part backside at the rim;

the Zigua, or Zigula, live at the northeastern shore of Tanzania, opposite to the isle of Zanzibar, north of the Kwere.

H: 35 cm

Provenience: German Private Collection

Vera und Wolfgang Nerlich, Munich, Germany

Start bid: 300 €, estimate: 2.000 €



TANZANIA, ZIGUA

279 Standing figure

terracotta, dark brown patina, stylized forms, the lower part of the body wrapped in cloth, the eyes inset with seed vessels, circular cavities in forehead and belly, min. dam., slight traces of abrasion, base

H: 18,5 cm

Provenience: Peter Loebarth, Hameln, Germany

Wolfgang Nerlich, Munich, Germany

Start bid: 100 €, estimate: 1.000 €



SAMBIA

280 Pair of masks "chindele"

wood, different colouring, one mask reddish brown with traces of black, the other one dark brown with kaolin, apart from that nearly identical formed: comparatively flat, the cheeks vaulted, enclosed by a diadem-like coiffure and framing beard, eyebrows and forehead tattoos in concentric lines, drilled holes in the corners of the mouth originally provided with plant fibres, completed by a plant fibre beard at the chin, slightly dam., crack (dark brown mask), drilling partly broken (reddish mask);

the function of this mask is unknown. It was fixed to a big wickerwork basket coated with plant fibres and worn on the head, instead in front of the face. "Chindele" is a general term for a white person. The "chindele" mask type probably a creation of the Mbunda.

H: 20,5 cm/ 21 cm

Provenience: Vera und Wolfgang Nerlich, Munich, Germany

Start bid: 600 €, estimate: 3.500 €



SAMBIA, MBUNDA

281 Face mask "sachihongo"

wood, reddish brown patina, camwood powder, large-sized and voluminous forms: the oval face marked by accentuated cheeks and a bulging forehead coated with deep concentric grooves, wooden splinters marking the teeth, a plant fibre bonnet hoisted on a cane frame backside, a roof-like protruding headcrest with monkey fur above the forehead, slightly dam., minor missing parts, small traces of insect caused damage, base; presumably belonging to the type of "sachihongo" masks. "Sachihongo" is the incarnation of a hunter, but is depicted as chief and sooth-sayer as well. The masks ("makisi") represent ancestor spirits. They appear after the circumcision of young boys, during times of convalescence in the bush camps, where they dance, accompanied by the songs of the male and female audience. The mask is completed by a crown of feathers, fiber beard and a net suit, made of the fibers of the "mushamba" tree.

H: 38 cm

Provenience: Peter Loebarth, Hameln, Germany

Vera und Wolfgang Nerlich, Munich, Germany

Start bid: 750 €, estimate: 5.000 €



SAMBIA, MBUNDA

282 Mask "mwana phwevo"

wood, shiny blackish brown patina, small slit eyes and mouth, various facial scarifications, min. dam., small missing parts, base

H: 22,5 cm

Provenience: Vera und Wolfgang Nerlich, Munich, Germany

Start bid: 100 €, estimate: 600 €



MOZAMBIQUE, MAKONDE

283 Mask "lipiko"

light brown wood, brown patina, remains of black paint, realistic facial features, moustache, eye brows and coiffure made from real hair, min. dam., slight traces of abrasion, base;

"lipiko" masks appeared at initiation celebrations. They were worn by the young initiates "vaali" at the "mapiko" masquerade. They depict women rather than men and were kept in special sacred mask houses outside the village. Women were not allowed to see them.

H: 27 cm

Provenience: Peter Loebarth, Hameln, Germany
Vera und Wolfgang Nerlich, Munich, Germany

Start bid: 300 €, estimate: 2.000 €



MOZAMBIQUE, MAKONDE

284 Helmet mask "lipiko"

light-weighted wood, mat black patina, white paint, real hair, nearly naturalistic features, vaulted lids with painted pupils flanking a flat nose with a diamond-shaped mouth underneath, min. dam., fine cracks, small missing parts, slight signs of abrasion, base;

"lipiko" masks appeared at initiation celebrations. They were worn by the young initiates "vaali" at the "mapiko" masquerade. They depict woman rather than men and were kept in special sacred mask houses outside the village. Women were not allowed to see them.

H: 27 cm

Provenience: Vera und Wolfgang Nerlich, Munich, Germany

Start bid: 400 €, estimate: 2.000 €



MOZAMBIQUE, MAKUA

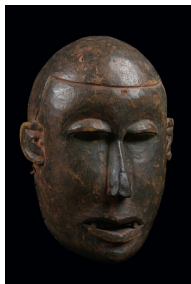
285 Face mask

wood, light brown patina, coiffure and beard with black paint, expressive forms: a bulging forehead, the big heart-shaped mouth opening embedded between vaulted cheeks, the chin elongated and tapering to a point, the beard marked by incised lines and animal hair, eyes and nose showing naturalistic appeal, slightly dam. (nose tip, ears), paint rubbed off, rep. (backside on the upper rim), base

H: 23 cm

Provenience: Vera und Wolfgang Nerlich, Munich, Germany

Start bid: 300 €, estimate: 2.000 €



MOZAMBIQUE, MAKUA

286 Anthropomorphic face mask

wood, greyish brown patina, camwood powder, the eyes arranged close to each other, mouth with curved lips, inserted metal teeth in one row (one missing), slightly dam., missing parts (ears, the rim backside);

the Makua live in the north-eastern part of Mozambique, together with the Lomwe they make about half of the population of Mozambique.

H: 23 cm

Provenience: Vera und Wolfgang Nerlich, Munich, Germany

Start bid: 200 €, estimate: 2.000 €



MOZAMBIQUE, MAKUA/MAKONDE

287 Mask

light-coloured and -weighted wood, dark red paint, both cheeks and the the chin spread with blackish mass, coiffure of animal hair, narrow nose with curved bridge, naturalistic formed eyelids, separate carved teeth, slightly dam., missing parts (mouth, eyelids, rim backside)

H: 21 cm

Provenience: Ingo Evers, Bonn, Germany
Vera und Wolfgang Nerlich, Munich, Germany

Start bid: 150 €, estimate: 1.000 €